



TE KUNENGA | MASSEY  
KI PŪREHUROA | UNIVERSITY  
UNIVERSITY OF NEW ZEALAND

# EVERYTHING

AVAILABLE QUALIFICATIONS  
AND MORE





# University rankings

## EARN AN INTERNATIONALLY RECOGNISED QUALIFICATION

Massey's researchers are respected internationally, and many of our qualifications have international accreditation. You can be confident your learning will be up to the latest international standards and your qualification will be well received wherever your journey takes you after you graduate.

## QS (QUACQUARELLI SYMONDS) WORLD UNIVERSITY RANKINGS

A 5-star plus rating overall from the QS world university ranking agency.

### QS top 300 universities in the world

Massey is ranked 239th equal in the world.

### 2 subjects in top 30 in the world

Veterinary Science and Developmental Studies are ranked in the top 30.

### 4 subjects ranked in the top 100 for the QS subject rankings

Veterinary Science, Agriculture and Forestry, Development Studies and Communication and Media Studies.

### 5 top rankings in New Zealand

Art and Design, Veterinary Science, Agriculture and Forestry, Development Studies and Communication and Media Studies.

## SHANGHAI RANKINGS

### 3 top 100 subjects in the Shanghai rankings

Communication, Veterinary Sciences, Food Science and Technology.

### 6 subjects ranked top in New Zealand

Agricultural Science, Communication, Economics, Finance, Nursing and Veterinary Sciences.

### 16 subjects in latest rankings

Overall, we were ranked in 16 subjects in the latest Shanghai Subject Rankings.

## RED DOT DESIGN RANKING

### Red Dot Design Ranking 3rd in Asia Pacific

Massey's Toi Rauwhārangī College of Creative Arts do exceedingly well in the Red Dot Design Rankings. This result places Massey in the top three universities in Asia Pacific for the eighth year in a row.

## CEO MAGAZINE GLOBAL MBA RANKINGS

### Tier One Global MBA ranking

We were the only New Zealand university with a Tier One Global MBA ranking in 2023.

### 9= for Global EMBA

In 2023 we were ranked 9th equal in the world for our Executive Master of Business Administration.

### 11th for online MBA

We were ranked 11th globally for our online Master of Business Administration in 2023.

**MASSEY IS GLOBALLY RANKED BY QUACQUARELLI SYMONDS, SHANGHAI RANKINGS, RED DOT AND OTHERS ACROSS MULTIPLE SUBJECT AREAS, AND FEATURES AOTEAROA'S ONLY AVIATION AND VETERINARY MEDICAL SCHOOLS.**

## COMMITMENT TO SUSTAINABILITY DEVELOPMENT GOALS

### QS Sustainability University World Rankings

Massey has a strong commitment to tackling the world's greatest environmental, social and governance challenges and is ranked 81st equal.

### Times Higher Education Impact Rankings

Massey has a strong commitment to achieving the United Nation's Sustainable Development Goals (SDGs) and is ranked 86th.

## OTHER NOTABLE ACCREDITATION

- Accrediting Council on Education in Journalism and Mass Communications (ACEJMC)
- Association to Advance Collegiate Schools of Business (AACSB)
- Association of MBAs
- Chartered Financial Analyst Institute (CFA) Program Partner
- Association of Asia-Pacific Business Schools
- American Veterinary Medical Association
- Institute of Food Technologists
- International Association of Schools of Social Work
- Asian and Pacific Association for Social Work Education
- Australian Institute of Medical Scientists
- Royal Institution of Chartered Surveyors
- Pacific Association of Quantity Surveyors

# Massey University Prospectus



## INTRODUCTION

- 02 Welcome | He mihi
- 04 Find your potential
- 05 What is a degree?
- 06 Study with flexibility –  
Campus locations
- 08 Preparation study options
- 32 Massey University College

## WHAT SHOULD I STUDY?

- 09 Pathways to Postgraduate Study
- 11 What should I study?
- 12 Undergraduate degrees
- 33 Certificates, Diplomas and  
Graduate Diplomas

## STUDYING WITH US

- 43 Recommended and  
required subjects
- 46 Admission requirements
- 50 Student Support
- 54 Māori students at Massey
- 56 Pacific students at Massey
- 58 International students
- 59 Massey Academy of Sport
- 60 Accommodation at Massey
- 62 Budgeting
- 64 Terminology

### UPDATED APRIL 2024

The information contained in this publication is indicative of the offerings available in 2024 and subsequent years. This information may be subject to change. While all reasonable efforts will be made to ensure listed qualifications are offered and regulations are up to date, the University reserves the right to change the content or method of presentation, or to withdraw any qualification or part thereof, or impose limitations on enrolments. For the most up to date information please go to [massey.ac.nz](https://massey.ac.nz)



# Nau mai Haere mai

## WELCOME FROM THE VICE-CHANCELLOR

**In a time where change seems more constant than ever and where choice has never been more important, picking a university can seem like a daunting task. This prospectus aims to answer your questions about why Massey might be right for you, and how we will help support you on your study journey.**

The COVID-19 pandemic has presented a lot of challenges, but Massey's flexibility and long history of delivering online learning meant that we, along with students both in Aotearoa New Zealand and around the world, could weather the storm together, with as little disruption as possible.

Massey is a truly unique university in Aotearoa. By joining Massey you are making a decision to carry on a tradition that has shaped New Zealand and made significant contributions around the world - and we know our graduates are in high demand. We are proud of our commitment to Māori and Pacific students, and to aspiring to being a Te Tiriti-led university, while our international focus has led to us establishing a number of learning centres in China, providing unique opportunities for students here and abroad.

Our staff and students have led the way in business innovation, creative arts, food, animal and general sciences, health, humanities and social sciences, with many of these delivered through New Zealand's largest and most successful distance learning service. We are recognised as a leading teaching university and host to the National Centre for Tertiary Teaching Excellence. We consistently take a leading role in research and have numerous collaborations with other researchers at institutions in New Zealand and around the world.

Wherever you choose to study you will be able to access a comprehensive range of undergraduate and postgraduate qualifications covering everything from education to humanities and social sciences, to sciences, engineering and health, to arts and business. This prospectus shares with you all that Massey has to offer.

Whatever you choose to study, and wherever you chose to do it, we understand success comes from a thousand little moments and here at Massey we are committed to helping you every step of the way.

**Professor Jan Thomas**



# He mihi

## FROM THE DEPUTY VICE-CHANCELLOR MĀORI

**E te huinga tauira e tau nei,  
nau mai, haere mai.**

Haere mai rā ki Te Kunenga ki Pūrehuroa. Tomokia te whare ako, te whare o te mātauranga, kia tīkina mai ai ngā kete o te wānanga. Mā tēnei ara, e tutuki ai ngā wawata me ngā tūmanako e ngākaunuitia ana mō te rangi āpōpō. Haere mai ki ōna whenua kura, ko Turitea ki Manawatū, ko Oteha ki Ōkahukura, ko Pukeahu ki Te Ūpoko o Te Ika. Ko Te Pūrehuroa e whakahuatia nei, he rarangi whetū ki te rangi, he hīnātore ki te māramatanga. Inā hoki, ahakoa he tīmatanga, kāhore he mutunga o tēnei mahi te whai i te mātauranga. Nō reira, nau mai, kia mārāma ai ngā pūmanawa, kia pakari ai ngā pūkenga. Ka ea te kōrero, mā tini, mā mano ka rapa te whai, ka hua ai te wānanga.

Koia tēnei ko te reo maioha o Te Kunenga Pūrehuroa, e tukuna atu ana ngā mihi manahau ki a koutou katoa. E rarau ki te tapuwae nui o Tāne, ko Tāne-i-te-Wānanga, ko Tāne-nui-ā-Rangi.

Kia ū ki te ara, kia mau ki te mātauranga, kia manawanui ki te ako, hei oranga mātauranga mōu, mō tātou katoa.

Kia toi te mana, kia tau te mauri, kia tupu te māramatanga ki a tātou katoa.

E ngana ana Te Kunenga ki Pūrehuroa ki te hāpai, ki te whakamana i Te Tiriti o Waitangi, Te Kawenata o Aotearoa, puta noa i ngā kawenga, haepapa, mahi katoa o tō tātou nei wānanga. Ko te tūmanako ia, ka puta mai he tino mōhiotanga, he tino māramatanga mō te wāhi ki Te Tiriti o Waitangi i Aotearoa, hei whakahihiko hoki i tō ara ako i Te Kunenga ki Pūrehuroa kia taea ai e koe te tiki atu i aua mōhiotanga, māramatanga katoa kia hāngai pū ai ki ngā e mahia atu ai e koe.

The name Te Kunenga ki Pūrehuroa is a symbolic reference to the knowledge journey that you have now embarked upon. Te Pūrehuroa represents the infinite constellations of stars that radiate the skies above us, illuminating a pathway towards a future that you will cultivate and forge during your time here at Massey University. The acquisition of knowledge brings with it a lifelong commitment to learning and is a journey without end – from inception to infinity.

We encourage you to draw inspiration from the many kōrero, or ancient narratives, that make Massey University so distinctive.

In the spirit of the great knowledge seeker Tāne, we hope that your time here is fulfilling, that you prepare yourself well for the challenges ahead of you and that you may aspire to attain ultimate success.

Importantly, our University seeks to uphold and honour Te Tiriti o Waitangi, the founding document of our nation, across all facets and dimensions of our work and related endeavour. We sincerely hope that during your time with us, that your learning journey will bring with it pathways that illuminate the pivotal place of Te Tiriti o Waitangi in Aotearoa New Zealand and also allow the opportunity for you to deepen your understanding of Te Tiriti so that you might apply that knowledge to your mahi.

Nāku noa, nā

**Professor Meihana Durie**  
Rangitāne, Ngāti Kauwhata, Ngāti Raukawa  
Te Au ki Te Tonga, Ngāti Porou, Rongo  
Whakaata, Ngāi Tahu



# Rapua te mea ngaro Find your potential

**MASSEY IS AOTEAROA  
NEW ZEALAND'S  
UNIVERSITY OF CHOICE  
FOR ALMOST 30,000  
STUDENTS EVERY YEAR  
FROM MORE THAN  
100 COUNTRIES.**

**We are committed to helping you achieve your personal aspirations and full potential.**

We're here to help you reach your educational goals and your career dreams. We want you to succeed. We have award-winning teachers, well-connected lecturers and world-renowned researchers. Add to this our committed support staff and you have the best learning environment to help you move towards your future.

We are also the only University in New Zealand that offers tertiary qualifications in aviation, including a unique qualification that features integrated professional pilot training.



# He aha te tohu? What is a degree?

## WE HAVE 35 BACHELOR'S DEGREES TO CHOOSE FROM

A degree is made up of individual courses, each of which has a credit value. To complete a three-year degree like the Bachelor of Business, you'll need to pass courses to the value of 360 credits. This usually means studying eight 15-credit courses per year – four in each semester.

A four-year degree like the Bachelor of Design with Honours is made up of 480 credits, and the five-year Bachelor of Veterinary Science requires 600 credits.



**Scan to learn more**  
[massey.ac.nz/courses](https://massey.ac.nz/courses)

### DIPLOMAS AND CERTIFICATES

If you don't want to study for a three-year degree, you can choose from a range of other qualifications with our diplomas and certificates. They might take six months or a year of full-time study, or longer if you're studying part-time. See page 33 for a list of diplomas and certificates.

### MAJORS, DOUBLE MAJORS AND MINORS

When planning your course of study, most degrees allow you to choose a major (your speciality) and/or a minor in particular subject areas. Some degrees allow you to graduate with a double major by completing the requirements for two subject areas within one degree.

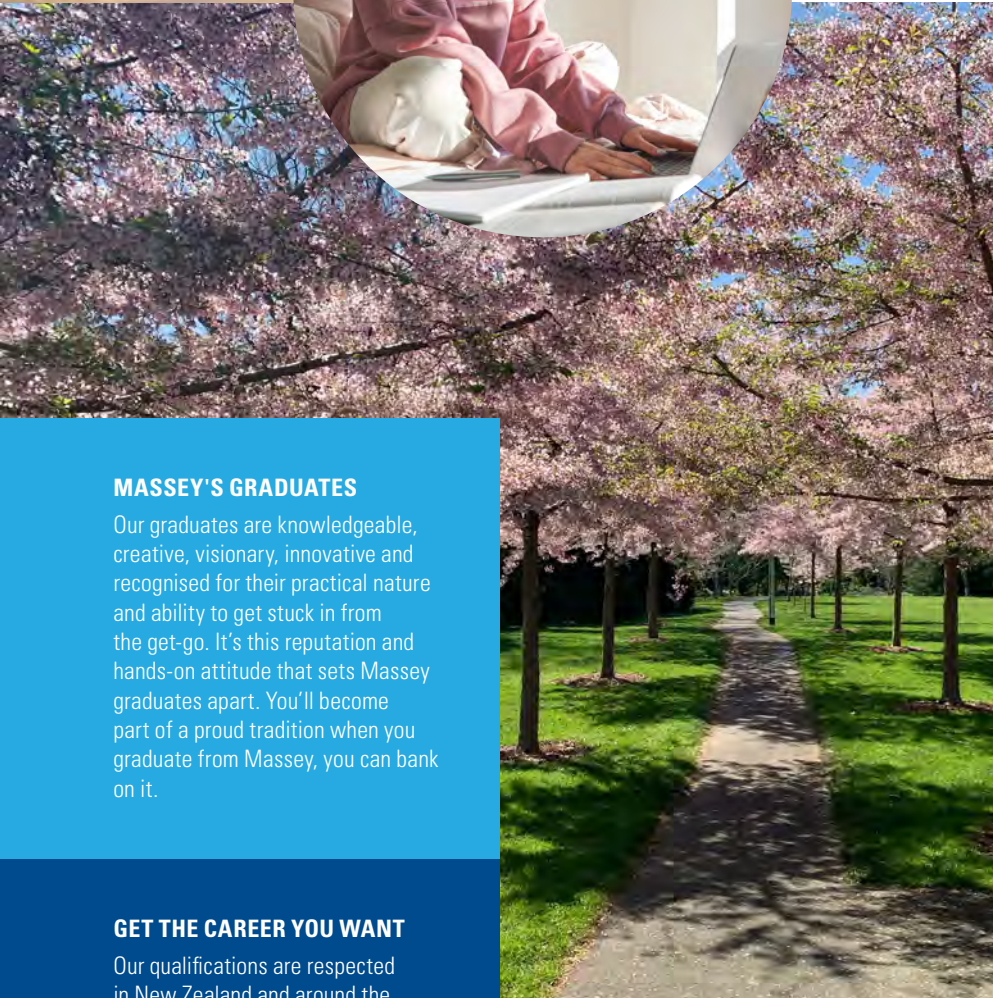
If you're applying straight from school, you'll need a high level of achievement in NCEA Level 3 (or equivalent) to gain admission. Alternatively, you may be admitted if you achieve good grades in your first year in a single degree course (i.e. Bachelor of Arts, Bachelor of Business or Bachelor of Science).

### MASSEY'S GRADUATES

Our graduates are knowledgeable, creative, visionary, innovative and recognised for their practical nature and ability to get stuck in from the get-go. It's this reputation and hands-on attitude that sets Massey graduates apart. You'll become part of a proud tradition when you graduate from Massey, you can bank on it.

### GET THE CAREER YOU WANT

Our qualifications are respected in New Zealand and around the world. You'll be taught by teachers, lecturers, and researchers with strong links within their industries and professional organisations. This means you'll graduate with a highly relevant qualification sought after by leading employers.





# Study with flexibility

## WE ARE AOTEAROA NEW ZEALAND'S ONLY TRULY NATIONAL UNIVERSITY

You can study on-campus at Auckland, Manawatū or Wellington, via distance learning, or a combination of both. You can also change where and how you study if your circumstances change. With the largest number of qualifications on offer, the choice of where and how you study is completely up to you.

### CAMPUS OPEN DAY

#### Manawatū, Turitea Campus

Wednesday 7 August, 9am–2pm

#### Auckland, Ōteihā Campus

Friday 16 August, 9am–2pm

#### Wellington, Pukeahu Campus

Friday 23 August, 9am–3pm

#### Virtual – Distance

Thursday 5 September, 11am–12pm/7pm–8pm

## STUDY WHAT AND WHERE YOU WANT

### TE AKO MAI I TAWHITI DISTANCE LEARNING

Our lecturers are specialists in interacting with students studying by distance.

We have unrivalled support services including self-help tools, online-learning support, an assignment pre-reading service and a specialised library service to support over 1500 undergraduate course options.

We help students get together on-campus, around the country (and the world) and online. It's part of what makes us New Zealand's number one provider of distance learning – being responsive to students' needs – so no one has to study in isolation.

There's no difference in teaching standards when you study by distance learning. The lecturers who teach from a distance also teach on-campus.



Scan to learn more  
[massey.ac.nz/distance](https://massey.ac.nz/distance)

### TE-WHANGANUI-A-TARA WELLINGTON PUKEAHU CAMPUS

Wellington's Pukeahu campus is centrally located, offering excellent access to the many attractions in the capital as well as to modern student accommodation. Our world-class Toi Rauwhārangī College of Creative Arts sits in the heart of the campus, offering qualifications in design, fine arts, commercial music, and screen arts. The College has provided excellence in creative arts education since 1886. Ngā Pae Māhutonga Wellington School of Design is currently ranked No 2 in Asia Pacific for Design Concept, and the College ranks in the QS top 150 globally for art and design.

Its faculty includes globally connected academics and practitioners who, along with industry standard facilities, offer a stimulating and highly innovative learning environment.

The Wellington campus is home to the School of Health Sciences and the Sleep/Wake Research Centre. It also features the internationally acclaimed Research Centre for Hauora and Health, the Joint Centre for Disaster Research at the School of Psychology, the Centre for Defence and Security Studies, and the School of Nursing's state of the art simulation lab.

The Massey Business School and the College of Humanities and Social Sciences jointly offer the Bachelor of Communication which provides access to video, audio and multimedia production. Students studying BC majors including expressive arts or media studies at the School of Humanities, Media and Creative Communication, or journalism and public relations at the School of Communication, Journalism and Marketing, can also use these facilities.



Scan to learn more  
[massey.ac.nz/wellington](https://massey.ac.nz/wellington)

### RAINBOW STUDENTS

We are committed to providing a safe and inclusive space for our ākonga and kaimahi. We want to ensure that Massey is a welcoming place for all our people – whether you are open about your identity or not.



All University workplaces, grounds and vehicles are totally smoke free, with the exception of designated smoking areas.



### TE PAPA-I-OEA MANAWATŪ TURITEA CAMPUS

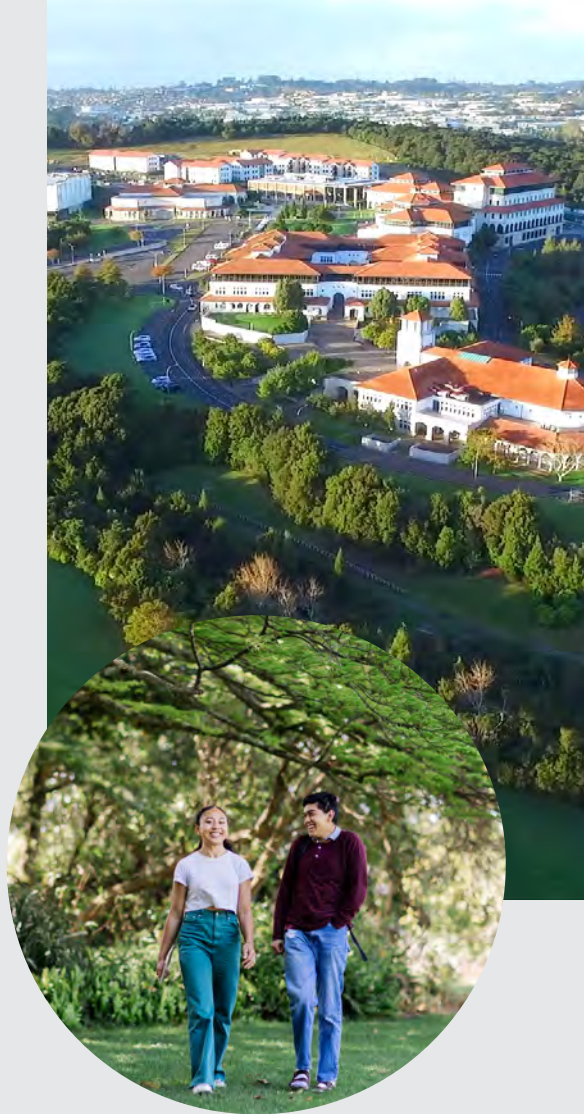
Our picturesque Manawatū campus is home to Aotearoa New Zealand’s only internationally-accredited veterinary science teaching and research qualification, and university-based aviation school (based at the Aviation Centre), and is New Zealand’s number one university for agriculture.

Great sports facilities, including an award-winning gym and recreation centre, an equestrian centre, the Massey Sport and Event Centre with multiple grass sport fields and an all-weather Olympic-standard athletics track.

Our Manawatū campus boasts:

- High quality on-campus accommodation
- A wealth of clubs and activities
- Free bus service to and from campus and around the city
- The campus champions industrial innovation within food science and technology, biotechnology, advanced material sciences and product development, it is also home to exciting options in humanities, business and health and a state of the art nursing lab.
- Home to the prestigious Food HQ – New Zealand’s international centre for collaborative food research is based here in Palmerston North.

Palmerston North is New Zealand’s student city, with nearly half the population under 25 and some of the most competitively priced accommodation in the country.



#### NAVIGATE UNI LIFE WITH EASE

Download the Massey Uni App for Timetables, Campus Maps, Events, Rec Centre Info, Library Services, Online Learning, and Student Portal Access!

#### APP STORE



#### GOOGLE PLAY



Scan to learn more  
[massey.ac.nz/manawatu](https://massey.ac.nz/manawatu)

### TĀMAKI-MAKAU-RAU AUCKLAND ŌTEHĀ CAMPUS

The campus is located a short drive from the heart of Auckland, Aotearoa New Zealand’s largest and most vibrant city, and is surrounded by a thriving business and retail community, which provides many opportunities for students seeking part-time employment.

The campus offers a trading room creating an applied experience for finance students, the new Innovation Complex and much more. There is an excellent bus service, awesome facilities including a recreation centre, science labs a modern library, funky cafés and Student Central, where students hang out.

Our 292-bed student accommodation, Te Ōhanga Village, is located on campus so that students only have a very short walk to the library, lecture theatres and the dining hall. The campus is surrounded by a wide range of amenities including numerous cafés, shopping centres, a cinema complex, libraries, extensive leisure and sport facilities including the QBE Sports Stadium.



Scan to learn more  
[massey.ac.nz/auckland](https://massey.ac.nz/auckland)



#### KĀHUI IRARAU

Connecting rainbow and takatāpui communities at Massey University, Kāhui Irarau is a social platform currently available via Facebook and Instagram.

Instagram icon [kahui\\_irarau](https://www.instagram.com/kahui_irarau)

## PRE-DEGREE

### UNIVERSITY PREPARATION

Massey offers a range of qualifications and short courses to help you develop your academic and English language skills, and learn strategies for successful study at university. Pathway qualifications enable you to not only prepare for study but also meet the entry requirements for your undergraduate degree.

#### 1 CERTIFICATE IN FOUNDATION STUDIES

Full Foundation, for details see page 34.

#### 2 CERTIFICATE OF UNIVERSITY PREPARATION

Fast-track Foundation, for details see page 34.

## UNDERGRADUATE OPTIONS

### SUMMER SCHOOL

Some students find it beneficial to learn a bit more about a particular subject before they start a formal course of study and enrol in preparatory courses in order to gain the necessary pre-requisite requirements for some subjects, while others want to fast-track their qualification. Summer School makes this possible with courses covering a wide range of subjects. Summer School runs from mid-November to mid-February.

Find out more about Summer School [massey.ac.nz/courses](https://massey.ac.nz/courses)

### SCIENCE SUMMER SCHOOL

This qualification is for students who don't have the subjects required in the sciences and mathematics at NCEA Level 3, but who need them to gain admission to their preferred choice of study. We offer a selection of introductory Summer School courses in biology, chemistry, physics and mathematics with calculus and in statistics. Successful completion of these enables students to meet entry criteria.

Available at Auckland and by distance.

[massey.ac.nz/summerschool](https://massey.ac.nz/summerschool)

# He whakarite ako Preparation study options



#### PRE-DEGREE UNIVERSITY PREPARATION

For further information or to apply





#### CONTACT US

We welcome enquiries regarding pathways to postgraduate study.

✉ [contact@massey.ac.nz](mailto:contact@massey.ac.nz)



**WE HAVE MORE THAN 130 POSTGRADUATE QUALIFICATIONS FOR YOU TO SPECIALISE IN**

## PATHWAYS TO POSTGRADUATE STUDY

### POSTGRADUATE QUALIFICATIONS

Postgraduate qualifications give you the edge over others when applying for jobs and can amount to an increase in your pay packet. They are also extremely relevant if you want a career change or want to move up the hierarchical ladder later in your career development.

Some companies even sponsor you to do research work in particular fields. This is an excellent way to earn while you learn and do something you love in a supported environment.

Some careers require you to do postgraduate qualifications, for example clinical psychologists require a master's qualification in order to be professionally registered practitioners.

So start thinking about your academic pathway today so that you can set yourself up for the future.

### PATHWAYS

Our qualifications offer the opportunity to undertake in-depth study in a particular area of interest and build your skill set.

- 1 UNDERGRADUATE**  
Bachelor's Degree  
Graduate Diploma
- 2 POSTGRADUATE**  
Postgraduate Certificate  
Postgraduate Diploma  
Honours  
Masters  
Doctorate





# What should I study?

On the following pages, discover what you can study with Massey – whether you're joining us as a first time student, returning to study or changing direction.

You'll also learn about how to apply, how to prepare for study, the support Massey offers students, and more.

Where you see QR codes, use your phone's camera to scan and access the relevant webpage for further detail.

## FIRST DEGREE QUALIFICATIONS

Qualification	Years	Auckland	Manawatu	Wellington	Distance
Bachelor of <b>Accountancy</b>	3	●	●	●	●
Bachelor of <b>Agribusiness</b>	3		●		○
Bachelor of <b>Agricultural Science</b>	3		●		○
Bachelor of <b>Animal Science</b>	3		●		○
Bachelor of <b>Arts</b>	3	○	○	○	●
Bachelor of <b>Aviation</b>	3		●		
Bachelor of <b>Aviation Management</b>	3		●		●
Bachelor of <b>Business</b>	3	○	○		●
Bachelor of <b>Commercial Music</b>	3			●	
Bachelor of <b>Communication</b>	3	○	○	●	●
Bachelor of <b>Construction</b>	3	●			○
Bachelor of <b>Design with Honours</b>	4			●	
Bachelor of <b>Fine Arts with Honours</b>	4			●	
Bachelor of <b>Food Technology with Honours</b>	4		●		
Bachelor of <b>Health Science</b>	3				●
Bachelor of <b>Horticultural Science</b>	3		●		●
Bachelor of <b>Information Sciences</b>	3	●	○		○

Qualification	Years	Auckland	Manawatu	Wellington	Distance
Bachelor of <b>Māori Visual Arts</b>	4		●		
Bachelor of <b>Nursing</b>	3		●	●	
Bachelor of <b>Resource and Environmental Planning</b>	3		●		○
Bachelor of <b>Science</b>	3	○	○		○
Bachelor of <b>Social Work</b>	3				●
Bachelor of <b>Speech and Language Therapy with Honours</b>	4				○
Bachelor of <b>Sport and Exercise</b>	3		○		●
Bachelor of <b>Veterinary Science</b>	5		●		
Te Aho Tātaiarangi: Bachelor of <b>Teaching and Learning Kura Kaupapa Māori</b>	3				●

- Available on campus
- Some or most majors available
- Some courses available



## Bachelor of Accountancy BAcc

Accountancy has evolved beyond mere number crunching and tax returns to now be the 'bottom-line' language of business. Accountants are increasingly adopting a business perspective, providing their services everywhere from small-to-medium businesses to multinational corporations.

**3 years full-time | 360 credits**  
**Part-time available**  
Available in the following location(s)

	Auckland	Manawātū	Wellington	Distance
Accountancy	●	●	●	●

### Accreditation and ranking

Accreditation	AACSB accountancy
QS Ranking	Top 250 universities for accounting and finance

The Bachelor of Accountancy degree will provide you with a fundamental understanding of business activities by focusing on the processes of identifying and communicating financial and non-financial information. You'll develop inter-personal, critical thinking and business communication skills. Massey is world-ranked in accounting and finance.

### Career opportunities

The Bachelor of Accountancy gives you the opportunity to concentrate on a particular area of accountancy. Our graduates leave with the academic requirements to be admitted into Chartered Accountants Australia and Aotearoa New Zealand and CPA Australia, and receive maximum exemptions for ACCA and CIMA.

The career options are numerous, depending on the combination of courses you choose to take. Graduates compete successfully for many professional careers in business, both in the private and public sectors, in the areas of accounting, financial management and consulting.

Massey graduates work in some of the top firms and businesses, in New Zealand and globally. These include PricewaterhouseCooper, KPMG, Deloitte, Ernst and Young, Fonterra and Toyota New Zealand.

[massey.ac.nz/bacc](http://massey.ac.nz/bacc)

## Bachelor of Agribusiness BAGBus

Many of our Agribusiness students have jobs before they even graduate. From running large farm-based agribusinesses right through to international food trade, sound business knowledge is essential for the future of Aotearoa New Zealand's primary production sector.

**3 years full-time | 360 credits**  
**Part-time available**  
Available in the following location(s)

	Auckland	Manawātū	Wellington	Distance
Farm Management		●	●	
International Agribusiness		●	●	
Rural Valuation		●	●	

**Note:** some majors available at Manawātū have courses that must be taken via Distance Learning. Some distance courses contain compulsory contact workshops.

### Accreditation and ranking

Shanghai Ranking	No.1 in New Zealand for agricultural science
QS Ranking	No. 1 university in agriculture



New Zealand’s economy is dominated by agriculture and food – and international demand is predicted to continue to grow rapidly.

**Industry experience work**

You will also undertake industry experience work over the summer.

**Career opportunities**

New Zealand’s agribusiness sector is flourishing and there’s a demand for graduates in: rural banking, farm consultancy, farm management, international marketing, economics, rural valuation, policy and business.

[massey.ac.nz/bagbus](http://massey.ac.nz/bagbus)

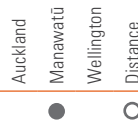
# Bachelor of Agricultural Science

## BAGSci

**Our world-class agricultural science qualification focuses on the overlapping areas of agriculture, management and technology, enabling you to come up with innovative solutions to the challenges our primary industries face today.**

**3 years full-time | 360 credits**  
**Part-time available**

Available in the following location(s)



**Note:** Most courses available via Distance Learning, but not necessarily every year

**Accreditation and ranking**

Shanghai Ranking	No.1 in New Zealand for agricultural science
QS Ranking	No. 1 university in agriculture

You will gain an understanding of agricultural systems within the wider context of the economy and society. You will learn about soils, plants and animals, economics and agricultural systems and management. Your studies will also give you an insight into the environmental issues in agriculture and how they can be managed.

**Industry experience work**

You will also undertake industry experience work over the summer.

**Career opportunities**

As an agricultural science graduate you could find employment in: agricultural and horticultural production and consultancy; fertiliser, feed, seed and stock companies; pest monitoring services; rural banking and farm management; biosecurity; plant and animal breeding; education; or research.

[massey.ac.nz/bagrisci](http://massey.ac.nz/bagrisci)



## Bachelor of Animal Science

### BAnSci

**We lead animal science in New Zealand and internationally. This is the only Animal Science degree qualification in New Zealand. Our animal, veterinary and agricultural science lecturers are among the best in the world and they will teach you about the latest developments in animal science.**

**3 years full-time | 360 credits**  
Part-time available  
Available in the following location(s)

	Auckland	Manawatu	Wellington	Distance
Animal Genetics and Breeding		●		
Animal Nutrition and Growth		●		
Animal Welfare		●		
Equine Science		●		

#### Accreditation and ranking

Shanghai Ranking	No.1 in New Zealand for agricultural science
QS Ranking	No. 1 university in agriculture

You will learn about genetics and breeding, nutrition and growth and animal welfare. This degree also offers an equine major. Our rigorous qualification is supported by industry and provides you with the valuable skills employers are looking for.

It has a distinct New Zealand flavour and complements established international qualifications. Massey University has several internationally-recognised animal-based research centres, including: AI Rae Genetics Centre, Monogastric Research Centre, Centre for Feline Nutrition, Equine Parentage, Equine Research Centre, Animal Welfare Science and Bioethics Centre and International Sheep Research Centre.

The animal industries, relevant government departments and iwi-owned agribusinesses recognise the importance of animal science in what they do.

#### Career opportunities

Provides you with the broad base of knowledge, attributes and expertise you require for a career in animal-related industries. There are opportunities with animal genetics companies, animal breeding programmes, animal feed companies, government agencies and in the increasingly important field of animal welfare. The equine industries, including sport and racing sectors, continue to offer roles requiring expert knowledge and understanding.

[massey.ac.nz/bansci](https://massey.ac.nz/bansci)

## Bachelor of Arts

### BA

**The Arts – which include the Humanities and Social Sciences – are the study of people: how we think about, interact with and make sense of the local, national and global communities we live in. We ask the big questions: What does it mean to be human? What makes us think and act the way we do? How are different communities organised and governed? How do we make sense of the world we live in?**

In the 21st century that world is rapidly changing. Studying with us allows you to develop critical thinking, analytical, communication and creative skills. It also gives you the ability to evaluate evidence, develop persuasive arguments and make informed choices – that means you can move into the future with confidence.

Our rigorous qualification offers a wide range of subjects that will enable you to think critically and help you to apply what you learn in the real world. We will challenge your thinking and enable you to be more imaginative, more innovative and more adaptable. You will learn valuable skills that allow you to connect with your work, your community and your world.





**3 years full-time | 360 credits**  
**Part-time available**  
 Available in the following location(s)

Auckland  
 Manawatu  
 Wellington  
 Distance

**Major and Minor**

Business Psychology	●	●	●
Chinese	●		●
Classical Studies	●	●	●
Creative Writing	●	●	○
Defence Studies		●	●
Economics	●	●	●
Education	●	●	●
Educational Psychology	●	●	●
English	●	●	●
Environmental Studies	●	●	●
Geography		●	●
History	●	●	●
Japanese	●	●	●
Linguistics	●	●	●
Māori Knowledge	●	●	●
Mathematics	●	●	●
Media Studies	●	●	○
Philosophy	●	●	●
Politics and International Relations	●	●	●
Psychology	●	●	●
Security Studies		●	●
Social Anthropology	●	●	●

Sociology	●	●	●
Spanish	●	●	●
Statistics	●	●	●

**Minor only**

Development Studies	●	●	●
Emergency Management			●
French			●
Indigenous Psychologies	●	●	●
Planning Studies		●	●
Rehabilitation Studies			●
Te Reo Māori	●	●	●
Theatre Studies	●	●	○

● On Campus  
 ● Some course  
 ○ Partially available: these majors can be completed on campus but the core courses for the Bachelor of Arts are not all available on campus.

**Accreditation and ranking**

Shanghai Ranking	No.1 in New Zealand for agricultural science
QS Ranking	No. 1 university in agriculture

**Career opportunities**

The BA gives you the broad base of knowledge, attributes and expertise you require for the careers of the future. You will need excellent interpersonal abilities and the capacity to meet new challenges and master new information quickly and efficiently. At the heart of the BA are skills in critical thinking, written and oral communication and research. We've designed them into the BA because the employers we talk to tell us these are precisely the skills they are looking for in the workforce of the future.

Our BA graduates work everywhere – in New Zealand and overseas. They work in the corporate, not-for-profit and local and central government sectors. They are wine-makers, broadcasters, sports people, artists, analysts, educators, international aid workers, diplomats and more.

[massey.ac.nz/studyarts](https://massey.ac.nz/studyarts)



# Bachelor of Aviation

## BAV

**Aviation drives the global economy and now is a good time to be undertaking a professional aviation degree. Following the Covid-19 pandemic global aviation organisations have rebounded and international air-freight and passenger air travel has rebounded and is growing rapidly to meet ever increasing demand.**

**3 years full-time | 480 credits**  
Available in the following location(s)

Auckland  
Manawatu  
Wellington  
Distance

### Accreditation and ranking

Preferred Flight Training Organisation	One of only four approved Air New Zealand Preferred Flight Training Organisations
CAA Professional Pilot licensing requirements	Only professional aviation degree in NZ, integrating Professional Pilot licensing requirements of NZ CAA. Graduate with CPL and MEIR.

The aviation industry needs more employees with the skills and critical thinking necessary to make significant contributions to the industry as it rebuilds. This degree prepares you to be more than just a professional pilot. It will give you the competencies to be a 'flight deck manager' by combining a university education with an in-depth understanding of the aviation industry.

### Leading the field in flight training Zealand

Purpose-built state-of-the-art aviation campus.

- Unique Equivalence Approval from the New Zealand Civil Aviation Authority
- Awarded both the Director of Civil Aviation Award 'Organisation' and 'Flight Instructor' (2017)
- The fleet includes state-of-the-art Diamond DA 40 single-engine and DA 42 twin-engine aircraft fitted with Garmin 1000 cockpit displays
- Plus a Robin R2160 – a fully aerobatic rated aircraft used for 'Upset Prevention and Recovery Training' purposes.
- Training devices include; Diamond Desk-Top Part-Trainers, Diamond Mentors, and simulators including the latest new generation DA 42 L360 Simulator, and a Frasca Tru-Flite simulator
- Scenario-based flight training builds the 'soft skills' required by professional aviators

- Assistant Instructor Scheme. BAV – FIC Graduates. Employment – two-year fixed term. Upgrade to B Cat Multi-engine IFR (Return of Service and KPIs apply)
- RPAS Short courses for both professional development and school students
- RPAS team awarded the RAeS 'E.A. Gibson' Award (2017) for contribution to flight safety in the agricultural sector.

### Career opportunities

There is currently a huge global shortage of pilots, which is also reflected in New Zealand. Air NZ has projected that they have a major requirement for pilots.

Graduates enjoy an excellent reputation in both New Zealand and overseas. There are also opportunities for employment as Flight Instructors as Assistant Flight Instructors with Massey for those who are selected for the third year Flight Instructor Course major.

[massey.ac.nz/bav](http://massey.ac.nz/bav)



# Bachelor of Aviation Management

## BAvMan

**Aviation careers are not all about pilots. The industry requires energetic, enthusiastic and passionate people to help it keep developing and to implement the emerging business models that will require new entrepreneurial skills.**

**3 years full-time | 360 credits**  
**Part-time available**  
 Available in the following location(s)



### Accreditation and ranking

Preferred Flight Training Organisation	Only aviation business degree in New Zealand
--	--

The aviation sector is essential to New Zealand’s – and the world’s – economic aspirations. The School of Aviation recognises this and plays a leading role in the training of future aviation professionals.

The aviation industry is multifaceted, affected by many external influences; e.g. fuel prices, global economies, global pandemics, the public’s travel demands, etc. So, how does the global aviation industry prepare for the constant challenges that regularly present themselves? Immense planning and the ability to “think on your feet” is required, as well as a broad understanding of all the ‘moving parts’ of the industry.

The BAvMan is the only aviation business degree in New Zealand. It will introduce you to a set of wide-ranging skills that can be applied broadly across the aviation sector.

Key courses focus on aviation management competencies for candidates entering the aviation industry. Or, if you’re already employed in the aviation industry but want a relevant tertiary qualification, this degree can enhance your career portfolio.

The degree includes the opportunity to:

- Enrol in aviation practicum courses (internships) in the third year.
- Students may also apply to go on an overseas exchange in their final semester.

This qualification introduces you to key aspects of the local and global aviation industry and eventual management roles.

### Career opportunities

A career in aviation is never dull. It will challenge you with its variety and its constantly changing environment. It requires people with a passion for what they do, and who want to learn more about the industry, its management and administration. A wide range of career opportunities continue to be taken up by BAvMan graduates such as management, logistics, air safety investigation, customer service and sales and marketing. Other potential roles include air traffic controllers; and planners; aviation consultants, aviation security; fire and rescue; regulatory bodies, and many more.

[massey.ac.nz/bavman](https://massey.ac.nz/bavman)



# Bachelor of Business

## BBus

**Combines theoretical and practical elements to give our graduates a distinctive and applied learning experience. Our graduates emerge career-ready and in demand by industry.**

**3 Years' full-time study**  
Available in the following location(s)

	Auckland	Manawatu	Wellington	Distance
Accountancy	●	●	●	●
Applied Professional Practice		●	●	●
Business Analytics	●	●	●	●
Economics	●	●	●	●
Finance	●	●	●	●
Financial Planning and Advice	●			●
Global Communications	●	●	●	●
Human Resource Management and Employment Relations	●	●		●
International Business	●			●
Management	●	●	●	●
Marketing	●	●	●	●
Organisational Technology Management	●			●
Property	●	●		●

You'll receive a broad business education and get to choose from one of the largest range of specialist majors available in New Zealand, which you can pair with a minor (or possibly two minors) from other subject areas across the University, including arts and sciences.

This qualification will put you on the path to a promising career by teaching you to think clearly, critically, and analytically, along with the ability to conceptualise ideas and relate them to real life business situations. You'll develop transferable skills to add value and make a positive contribution to any business or organisation.

### Career opportunities

More than any other business degree, the qualification equips you with the flexible and highly portable skills today's employers are looking for. Within just six months of graduation, up to 85 per cent graduates are employed in the career of their choice in New Zealand or overseas.

Some more specific career opportunities include: chartered accountant, business and systems analyst, communications manager, economist, financial analyst, human resources manager, marketing executive, small business manager, property valuer or developer, project manager and policy analyst.

[massey.ac.nz/bbus](https://massey.ac.nz/bbus)

# Bachelor of Commercial Music

## BCommMus

**Te Rewa O Puanga offers the most progressive music qualification in New Zealand. It is the only degree in New Zealand designed specifically to address the creation, production, promotion and distribution of tomorrow's music.**

### 3 Years' full-time study

Available in the following location(s)

	Auckland	Manawatu	Wellington	Distance
Music Industry			●	
Music Practice			●	
Music Technology			●	

### Accreditation and ranking

QS	Top 150 universities for art and design
National Association of Schools of Art and Design (NASAD)	New Zealand's only art and design school granted "substantial equivalency"

Future-focused and cross-genre, the qualification emphasises new technology, is industry engaged and taught by some of the country's best practicing musicians, industry professionals and academics. The qualification operates out of a state-of-the-art multi-million dollar facility designed by leading UK studio designer Andy Munro. Unique in Australasia, it includes recording, rehearsal and live performance studios, production and post-production facilities, a dubbing theatre, music and creative technology labs, and a motion performance capture studio.

The degree offers a choice of three majors:

### Music Technology

Covers software and hardware development, electronics, live and studio engineering and concepts for developing new musical interfaces. You will design and build your own instruments and applications. You'll learn how to operate large industry-standard consoles, as well as the latest digital recording and editing technologies.

### Music Industry

Covers artist development and management, label and distribution, music publishing, promotion, copyright, management, one-off and large-scale live events, and industry trends. You'll manage live music for concerts, tours and festivals.

### Music Practice

Focuses on musicianship and cross-genre performance using your instrument or musical interface of choice, along with computer-based production and composition techniques.

All content is firmly based in popular music, covering a wide range of genres and approaches to learning with a focus on original music.

Students from all three majors collaborate across their core courses, enabling you to produce, promote and perform a gig, a music video, and a short tour. Other shared core studios look critically at aspects of the contemporary music industry, such as web development, social media, philosophy and musicology. You can also choose elective courses.

You may continue your study with an optional fourth Honours year, which involves taught courses and a significant independent project that combines creativity with scholarly research and is a springboard to further postgraduate-level study.

### Career opportunities

Music software developer, music hardware development, digital music distribution, creative technologist, professional musician, producer, promoter, label representative, music marketing, artist manager, songwriter, sound engineer, publisher, booking agent, composer for film/TV/games.

[massey.ac.nz/music](http://massey.ac.nz/music)

# Bachelor of Communication

## BC

**Our students tell us the two main reasons they enrol is love of the subject matter and great job prospects. In our survey of graduates 2006–2017, they told us they have more than 280 different job titles across 20 different industries. Showing the degree equips graduates for a vast array of different jobs across many different kinds of work.**

3 Years' full-time study or the equivalent in part-time study  
Available in the following location(s)

	Auckland	Manawatu	Wellington	Distance
<b>Major and Minor</b>				
Communication Management	●	●	●	●
Digital Marketing	●	●	●	●
Expressive Arts	●	●	●	●
Expressive Arts / Media Studies (Composite Major/Minor)	●	●	●	●
Journalism			●	●
Linguistics	●	●	●	●
Media Studies	●	●	●	●
Public Relations	●	●	●	●
<b>Minor only</b>				
International Languages (Chinese, French, Japanese and Spanish)				●

### Accreditation and ranking

Accrediting Council on Education in Journalism and Mass Communications (ACEJMC)	Asia-Pacific's only degree accredited by the elite US-based ACEJMC
QS	Top 100 universities for Communication and Media

This degree has been designed to integrate diverse perspectives from the arts and business to give you deep insights into communication and media at work. You will study communication in action, including presentations, writing, media relations, marketing, and crisis communication, right through to strategic planning. Your creative skills will also be developed, with choices from theatre, media production, and creative writing. Internships and industry-connected projects ensure you have opportunities to gain relevant experience as you learn.

### Career opportunities

A short list of graduates' job titles includes: communication advisor, marketing coordinator, journalist, recruitment consultant, digital content manager, copywriter, events and communities coordinator, communication and planning advisor, project coordinator, international relations coordinator, digital communication advisor, social media editor, fund raising events manager, and community investment analyst.

Many of these jobs did not exist a few years ago. The degree is tailored to fast-changing 21st century workplace realities and equips graduates to be leaders in the quickly-evolving world of communication and media work.

[massey.ac.nz/communication](http://massey.ac.nz/communication)



# Bachelor of Construction

## BConst

Become a construction expert and contribute to all sectors of the construction industry. Many students gain internship positions giving them valuable work experience while they study. Construction graduates are sought-after by employers.

### 3 Years' full-time study

Available in the following location(s)

	Auckland	Manawatu	Wellington	Distance
Construction Management	●		●	
Quantity Surveying	●		●	

### Accreditation and ranking

RICS accredited	Both majors are accredited
NZIQS and PAQS accredited	The Quantity Surveying major is also accredited

Our degree teaches you how to develop and implement best practice building solutions and management techniques. You'll learn how to add value to the sustainable development of the built environment, and its use, by integrating sound technical and theoretical knowledge with industry experience, management and interpersonal skills.

Graduates earn excellent starting salaries. There are more jobs than graduates each year and many have their own business within 10 years.

There are currently two majors on offer: Quantity Surveying and Construction Management. Quantity surveyors ensure the achievement of value-for-money objectives, helping to cost projects, manage contracts and to enhance the financial side of construction projects. Construction managers help plan, coordinate and control the delivery of construction projects to meet cost, time and quality targets.

### Career opportunities

Whether you major in Quantity Surveying or Construction Management, you'll be ready to take on a wealth of different careers. You could work in a consultancy offering services to project owners, or with construction companies. You can be involved with project management, building renovation, earthquake strengthening, property development and management, industrial and commercial building services and insurance.

[massey.ac.nz/construction](http://massey.ac.nz/construction)

# Bachelor of Design with Honours

## BDes(Hons)

Nga Pae Māhutonga Wellington School of Design has a well-established reputation for excellence. In this degree you will address local and global issues to produce inspirational design solutions for a rapidly changing world.

### 4 Years full-time study

Available in the following location(s)

	Auckland	Manawatu	Wellington	Distance
Concept Design			●	
Fashion Design			●	
Industrial Design			●	
Integrated Design			●	
Photography			●	
Spatial Design			●	
Textile Design			●	
Visual Communication Design			●	

### Accreditation and ranking

QS	Top 150 universities for art and design
Red Dot	Top three in Asia Pacific for the past six years and continues to be the only school in Australasia to be included in the top 10.



George Naylor, BDes(Hons), Visual Communication Design

Ange Oliver Kāwai

The first year explores design practice and its core concepts, methods and applications. You'll be introduced to the principles of design through investigation and concept development. With a strong focus on making, you can expect to spend about two-thirds of your time hands-on in the studio, workshop or media lab. You'll also engage with different disciplines and cultural perspectives, and collaborate with other students across art, design, music and media production.

You can tailor your expertise through a range of electives that support your selected major and help define your graduate pathway.

In fourth year you can choose whether to follow the research-based BDes(Hons) or project-based BDes qualification. Either way, you'll push the boundaries of design innovation, consolidate your skills and produce a significant final project.

**Career opportunities**

We are proud that a very high proportion of our design graduates are in full-time or self-employment six months after graduation. They bring strong design, leadership and collaboration skills to a wide range of creative industries, as well as serving in creative roles in non-design-based businesses. Many pursue postgraduate study through the Master of Design or Master of Fine Arts in Design. Others go on to create their own jobs and develop innovative businesses all over the world.

[massey.ac.nz/design](http://massey.ac.nz/design)

# Bachelor of Fine Arts with Honours

## BFA(Hons)

**Whiti o Rehua School of Art will extend you, ground you in art theory and immerse you in art-making. Learn in a qualification leading in transdisciplinary research addressing cultural, social, political and environmental issues. Diversity in art practice and expression is encouraged.**

**4 Years full-time study**  
Available in the following location(s)

Fine Arts with Honours

- Auckland
- Manawatu
- Wellington
- Distance

**Accreditation and ranking**

QS Top 150 universities for art and design

In your first year you will be immersed in contemporary art and design processes as well as theoretical studies to develop an understanding of the context of your work. You'll create work responding to contemporary, multicultural and global ways of thinking. In years two and three you will develop your creative practices and media interests in your own studio space and you will

begin to exhibit your work around the campus and beyond. In your fourth year you'll consolidate what you've learned and expand and improve your own art practice. You could follow a discipline-specific path or work across multiple areas like digital media art, creative writing, performance, or sound alongside traditional media.

The qualification is delivered by internationally profiled artists, writers and curators who provide you one-to-one feedback alongside technical specialists helping you make your work.

You can tailor your skills through a range of elective courses, mixing and collaborating with students from all years of art, design, music and creative media. Fine arts areas include: sculpture, installation, video and film making, painting, drawing, performance, photography, print making, site-responsive work, curatorial activities and art writing.

**Career opportunities**

Our graduates use their degrees as an entrance into professional fine arts exhibition practice or as a stepping stone to careers in a wide array of industries where creative problem-solving and collaborative skills are in demand.

The qualification is deeply connected to the art world and responds to rapidly expanding creative opportunities, with 72% of graduates exhibiting their work and 63% employed in fine art related fields following graduation. Honours graduates may also continue on to postgraduate studies such as a Master of Fine Arts.

[massey.ac.nz/fine-arts](http://massey.ac.nz/fine-arts)



# Bachelor of Food Technology with Honours

## BFoodTech(Hons)

**You'll launch your career with all the right ingredients to become a leader in New Zealand's food industry. With a comprehensive mix of pure and applied science, technology, business and entrepreneurial skills, you'll be ready to meet the needs of today's food industry employers.**

**4 years full-time | 480 credits**  
**Part-time available**  
Available in the following location(s)

	Auckland	Manawatu	Wellington	Distance
Food Process Engineering	●			
Food Product Technology*		●		

### Accreditation and ranking

Institute of Food Technologist (IFT) accreditation	Both majors are approved by the US-based Institute of Food Technologists (IFT)
Shanghai Ranking	Top 75 universities worldwide for Food Science and Technology

You'll learn about the physical, chemical and biochemical properties of the materials you will be working with, and examine and analyse the most recent developments in ingredients, industrial equipment and processing systems. You'll also learn to assess the needs of consumers, the latest taste sensations and also develop a sound business sense.

You will gain in-depth knowledge of raw foods and how they can be handled, processed and packaged to be safe, convenient, nutritious and, most importantly, great tasting products. If you are creative and are keen on science or food, then this is the degree for you.

Our BFoodTech(Hons) is endorsed by the US-based Institute of Food Technologists (IFT).

### Career opportunities

The BFoodTech(Hons) has an international reputation for creating highly skilled professionals in hot demand by the food industry. This degree has an enviable record for the rapid employment of graduates and their fast-track progression to senior management.

Our food technology graduates manage some of New Zealand's largest industrial companies, and many have found employment elsewhere in the world. They typically start their careers in technical support roles before their ultimate destinations in the management, commercial, consulting or research and development areas within food industries.

First jobs for graduates include: food technologist – researching new foods and beverages, developing new products, packaging or processes; product development technologist – developing a new product from concept to final product; process technologist – improving and fixing food product processes; process engineer – developing new technology that improves food production processes; flavour technologist – developing flavour and texture innovations; packaging technologist – developing more efficient or sustainable food packaging.

[massey.ac.nz/bfoodtech](https://massey.ac.nz/bfoodtech)





# Bachelor of Health Science

## BHlthSc

**Health Science is an interdisciplinary study of the many dimensions of individual and population health including biological, psychological, social, cultural, and environmental factors.**

**3 years full-time | 360 credits**  
**Part-time available**  
 Available in the following location(s)

	Auckland	Manawatu	Wellington	Distance
Environmental Health				●
Health Promotion				●
Integrated Human Health				●
Mental Health and Addiction				●
Occupational Health and Safety				●
Psychology				●

**Note:** Some courses contain on-campus contact workshops.

### Accreditation and ranking

Environmental Health Officers Qualifications Regulations 1993	Our environmental health qualifications are recognised by the Ministry of Health as meeting qualification requirements for environmental health officers. Our qualifications are also recognised by Environmental Health Australia (EHA).
Institution of Occupational Safety and Health (IOSH)	Our Graduate Diploma and Bachelor of Health Science (Occupational Health & Safety) is accredited by IOSH, a global professional body based in the UK.
Drug and Alcohol Practitioners Association of Aotearoa New Zealand (DAPAANZ)	The Addiction Practitioner pathway is accredited. Graduates are eligible to apply for provisional registration to work in the sector as addiction practitioners.

A broad range of specialisations are offered, and you can build your degree with your unique interests in mind. Through real world learning, you will create and transform knowledge, translating it for the benefit of society. As a graduate, you will have the skills to investigate challenges, generate solutions, create interventions and develop new ideas for better health for communities, both nationally and internationally.

### Career opportunities

Launch yourself into a rewarding career and excel in the growing health industry, including government, private, public and community sectors (Māori and Pacific), addressing contemporary and emerging health challenges.

Possible career choices include environmental health officers, occupational health and safety officers/managers, health educators, mental health promoter and addiction practitioner, programme coordinators and evaluators, health promoters, community health workers, policy advisers, analysts, health advocates and life coach. You may also want to undertake advanced study at the postgraduate level.

[massey.ac.nz/healthscience](https://massey.ac.nz/healthscience)



# Bachelor of Horticultural Science

## BHortSci

**Our world-class horticultural science qualification focuses on giving you the relevant, contemporary skills that industry requires and will ensure that you can take your place leading this exciting industry into the future.**

**3 years full-time | 360 credits or the equivalent in part-time study**  
Available in the following location(s)

Most courses available via Distance Learning, but not necessarily every year

Auckland	Manawatu	Wellington	Distance
●	●	●	●

### Accreditation and ranking

QS	No 1 university in agriculture and forestry
Shanghai Ranking	No.1 in New Zealand for agricultural science

You will gain an understanding of the breadth of horticulture in New Zealand and internationally.

You will learn about plant biology, soils and environment, be introduced to production horticulture, agribusiness and agri-related analytics and statistics. Your studies will also give you industry experience while you study, with practical work courses including labs, sponsored multi-day study tours to horticultural regions within New Zealand and overseas, and field trips. You'll also complete work experience over the summer. All this will give you an advantage with prospective employers upon graduation, with industry contacts, a better understanding of the primary industries and the management skills to lead it.

Become a future leader in feeding the world sustainably.

### Career opportunities

After completing your qualification in horticultural science, you will be prepared for a wide range of technical and management positions, in New Zealand and internationally. You could be employed in: knowledge transfer and consultancy; orchard and greenhouse production management; international markets (access); crop disease and pest control; innovation and robotics; or post-harvest management.

[massey.ac.nz/bhort](http://massey.ac.nz/bhort)

# Bachelor of Information Sciences

## BInfSc

**There is huge demand around the world for people with information and communication technology skills. Our degree gives you the skills needed to make you a sought-after employee in New Zealand and internationally.**

**3 years full-time | 360 credits or the equivalent in part-time study**  
Available in the following location(s)

	Auckland	Manawatu	Wellington	Distance
Computer Science	●	●	●	●
Data Science	●	●	●	●
Information Systems	●	●	●	●
Information Technology	●	●	●	●
Software Engineering	●	●	●	●

### Minor only

Games Programming	●	●	●	●
-------------------	---	---	---	---

Institute of IT Professionals New Zealand (IITP)

Ensures that courses are relevant to the industry.



Anton Forde, PGDipMVA

Our degree is the only one in New Zealand that includes all five majors and you can choose to study more or less of these disciplines in various combinations. You'll learn business management, software and hardware development and gain a well-rounded understanding of the industry as well as the specialist skills you will need. Massey is also the only university where you can take courses that focus on the programming of computer games. You will gain the technical skills sought after by the industry including working with game engines.

### Career opportunities

ICT offers interesting careers in all areas of human endeavour, and all types of industry that require sophisticated software applications. In general, graduates with ICT qualifications are paid higher salaries than those in many other professions. We encourage you to get online and Google ICT vacancies in New Zealand and internationally!

[massey.ac.nz/binfsci](https://massey.ac.nz/binfsci)

## Bachelor of Māori Visual Arts

### BMVA

**Toioho ki Āpiti Māori Visual Arts qualification is the only university-based, degree in Māori visual arts and culture in the world, and is grounded in kaupapa Māori principles. It has produced some of the most respected contemporary Māori artists in the country.**

**4 years full-time | 480 credits**  
Available in the following location(s)

Auckland  
Manawatū  
Wellington  
Distance

Available in mixed mode – some courses will have to be completed by distance learning



### Accreditation and ranking

QS

Top 150 universities for art and design

Structured around Māori/Indigenous notions of mana whakapapa, mana tiriti, mana whenua and mana tangata. Your practice will develop and grow through the four years: Mata Puare (opening the eyes), Mata Aho (awakening perceptual capacity), Mata Aro (exciting the senses) and Matatau (generating understanding through perceptual and conceptual insight).

The notion of mana tangata sets the scene for you to engage with traditional toi Māori and tikanga, and to push the boundaries of your own art practice within a contemporary context.

Toioho ki Āpiti is a unique community where te reo, tikanga and whānaungatanga are the keys to growing creative practices and processes in toi Māori. The qualification includes contemporary Māori art practices, studio-based painting, sculpture, photography, moving image and installation. The lecturers are globally recognised practicing Māori artists, curators and academic writers, and are well connected to the international indigenous art community.

You don't need to be Māori or fluent in te reo to enrol. You'll have the chance to learn te reo Māori at the rate that's right for you.

### Career opportunities

Many graduates practice as contemporary artists exhibiting in New Zealand and around the world. Alternatively, you might go on to find work in galleries, museums and the wider creative sector, or teach Māori art at secondary or tertiary levels.

[massey.ac.nz/maori-visual-arts](https://massey.ac.nz/maori-visual-arts)

# Bachelor of Nursing

## BN

**Nursing combines compassion, knowledge and sophisticated health technology to restore, maintain and promote the health of individuals and communities.**

**3 years full-time | 360 credits**  
Available in the following location(s)

	Auckland	Manawatu	Wellington	Distance
Bachelor of Nursing		●	●	

### Accreditation and ranking

QS	Top 150 universities for Nursing
Shanghai Ranking	Top 150 universities in the world and second in New Zealand in the subject area of nursing
Nursing Council of New Zealand	Our nursing qualifications are nationally and internationally recognised and approved by the Nursing Council of New Zealand. Upon graduation you can apply for registration as a registered nurse.

A Bachelor of Nursing is the accepted entry-level qualification to become a registered nurse, and upon graduation you'll be equipped with the skills and knowledge to work in a variety of healthcare settings.

Our degree is an integrated course taught by experienced staff who are committed to creating a supportive learning environment and providing the best possible experience for nursing students at all levels.

We offer contemporary clinical simulation in our new clinical suites. Each suite is different, but most have a mock hospital setting and two-way observation spaces. They also have standard nursing equipment for hospital and community work. You will learn and practice nursing skills through role-play, case studies and simulations using state-of-the-art manikins.

Designed to meet the requirements of the Nursing Council of New Zealand for registration as a comprehensive nurse, this course combines theoretical knowledge from nursing, health and social sciences, together with a minimum of 1100 practical hours in a wide variety of clinical settings to give you every opportunity to prepare for registration as a nurse.

### Start your Nursing journey with our support

- Our graduates are work-ready and sought after to meet the health needs of people, whānau and communities.
- We offer our undergraduate nursing degree in Palmerston North and Wellington.
- Provides seamless connection with our postgraduate qualifications.

### Career opportunities

There are more than 50,000 nurses registered in New Zealand – the largest sector of the health professional workforce. Our graduates are employed in many countries. In the future you could work clinically with children and young people or with adults with complex health conditions, including mental health issues. Nurses provide healthcare in accident and medical centres, nurse-led clinics, general practices, schools, marae, public health units, and aged residential care facilities, as well as hospitals. Nurses also work in occupational health and safety, the defence forces, sexual health services, in prisons, as ACC case managers, educators and researchers, lead health organisations, and develop government policies.

[massey.ac.nz/study-nursing](https://massey.ac.nz/study-nursing)

# Bachelor of Resource and Environmental Planning

## BRP

**A creative professional field dealing with the natural and human dimensions of the world around us. It is a future-oriented area of study that integrates knowledge about our economic, social and natural systems.**

**4 years full-time | 480 credits**  
Available in the following location(s)

	Auckland	Manawatu	Wellington	Distance
Ecology		●		
Economics		●		●
Geography		●		●
Management		●		●
Māori Studies		●		●
Property Management		●		●

### Accreditation

New Zealand Planning Institute	Accredited by the New Zealand Planning Institute
--------------------------------	--

Planners promote more liveable, sustainable and resilient environments that respond to economic, environmental, political and technological changes. They shape cities and urban areas to be liveable and vibrant. They also design efficient and accessible transport systems, create neighbourhoods that are safe and affordable, help plan for productive rural areas that balance economic and environmental goals, and foster natural areas that conserve indigenous flora and fauna, providing opportunities for active recreation and the appreciation and enjoyment of our unique biodiversity.

This four-year degree is structured around a core of compulsory planning courses, a minor (a set of courses from another subject) and other planning-related courses, along with an elective course. A further aspect of the degree is practical experience, which you'll gain through field trips, projects and reports, workshops, studio work, case studies and interaction with people already working in the field.

### Career opportunities

Our graduates usually find work very quickly, and often well before they graduate. They are employed in a variety of roles in New Zealand and internationally. Some work for local councils or central government in environmental and natural resource planning, or urban planning. Many are in private practice in small or large consulting firms. Others are in agencies or businesses working in developing countries in Asia and the Pacific. Planners work across a broad spectrum including conservation, built heritage, or transport and energy infrastructure, natural hazards and recreation.

[massey.ac.nz/brp](https://massey.ac.nz/brp)



# Bachelor of Science

## BSc

**3 years full-time | 360 credits**  
**Part-time available**  
 Available in the following location(s)

**Major and Minor**

	Auckland	Manawatu	Wellington	Distance
Chemistry		●		
Computer Science	●	●	●	
Earth Science*		●	●	
Ecology and Conservation**		●		
Environmental Science*		●	●	
Exercise and Sport Science***			●	
Human Nutrition	●			
Mathematics	●	●	●	
Microbiology		●		
Molecular Cell Biology**		●		
Physiology (Minor only)			●	
Plant Science		●		
Psychology	●	●	●	
Statistics		●	●	
Zoology		●		

\* Each have compulsory field trips.  
 \*\* Subject to approval.  
 \*\*\* Some courses are offered in Auckland

**Accreditation**

QS Top 450 universities in the world for biological sciences

**Make a difference with an exciting and challenging career. The study of science provides a flexible qualification that will challenge you and give you the satisfaction of discovery.**

Leaders and influential thinkers around the world see the training, nurturing and appointment of well-qualified scientists and technologists as instrumental for positive growth and development. Studying sciences will put you in sync with this thinking and set you up for an exciting and prosperous future.

Our degree gives you flexibility and freedom of choice. You can select from a wide variety of majors from zoology to statistics, chemistry to psychology and more. You may choose minors from across the University qualifications in sciences, business and arts. If you're interested in further study and are doing well you can advance through our postgraduate offerings.

You'll learn from some of the top science researchers and teachers in the world and learn about and use some of the best facilities in New Zealand.

**Career opportunities**

Our graduates have the knowledge and skills in demand by employers for today's modern workplaces.

BSc graduates are wanted for diverse roles, including: research, government positions (technical, advisory, policy, regulatory and communications roles), in industries (agriculture, horticulture, viticulture, pharmaceutical), business, teaching and consultancy.

[massey.ac.nz/bsc](http://massey.ac.nz/bsc)

**PATHWAYS**

If you are not sure if you have the correct background to enter our science and technology qualifications, or feel that you need to upskill in a particular subject, our 'Pathways Tool' will help you work out what you might need to do next.



# Bachelor of Screen Arts with Honours

## BSA(Hons)

This is a unique qualification, offered by Te Rewa O Puanga School of Music and Creative Media Production, that gives you the knowledge and understanding of the production processes used in the multi-billion dollar screen industry, including animation, factual production, film production, game development, immersive media, media technology and visual effects.

4 years full-time | 480 credits  
Part-time available  
Available in the following location(s)

Auckland  
Manawatu  
Wellington  
Distance

### Accreditation and ranking

QS Top 150 universities for art and design

Screen production is a growing industry that needs technically skilled artists, creative leaders, practitioners and storytellers, who can work across many platforms and technologies. This qualification not only equips you with the hard skills to work both within and across disciplines, but also with the critical frameworks to explore and develop your own creative voice. From the first day of the course, you will be working hands-on with professional tools and pipelines, including state-of-the-art cameras, software, motion capture and green screen stages, audio and post-production suites, and mixed-reality gear.

The qualification is taught by staff with deep industry connections and active partnerships, and the course projects are designed with industry-led briefs. Core courses explore studio practice, creative leadership, storytelling, team development and collaboration, ideation, portfolio development, and client management.

You can tailor your expertise through a range of elective courses (75 credits) and the addition of a minor in any subject area available at the university.

Fourth year Honours involves taught courses and a significant independent project that combines creativity with scholarly research and is a springboard to further postgraduate-level study.

### Career opportunities

Graduates are equipped to work across many platforms in the screen and creative technology industries. Careers include producer, director, cinematographer, editor, pre-visualisation and storyboarding artist, VFX artist, game designer, creative technologist, sound designer, animation director, and many other future jobs within the creative technology industry.

[massey.ac.nz/bsa-hons](https://massey.ac.nz/bsa-hons)

# Bachelor of Social Work

## BSW

Develop your passion for helping others into a rewarding career. Our highly sought after, internationally recognised degree can take you around the globe.

4 years full-time | 480 credits  
Part-time available  
Available in the following location(s)

Auckland  
Manawatu  
Wellington  
Distance

**Note:** The practice-focused courses are supported by compulsory in-person contact workshops. Those can be attended either on the Manawatu or Auckland campus.

### Accreditation

New Zealand Social Workers Registration Board	Students who complete the Bachelor of Social Work or Master of Applied Social Work can immediately apply for provisional registration as a registered social worker
---	---

This degree equips you with the knowledge and skills needed to understand people, whānau, families and communities as you work with them to improve their wellbeing.

The BSW is a structured degree, made up of compulsory courses. The content of the degree reflects some of the key national and international issues and trends in social work such as identity, sustainability and decolonisation. A highlight of the qualification is the completion of two semesters of fieldwork in approved placement agencies.

### Career opportunities

The BSW is a New Zealand and internationally recognised social work qualification, and graduates are in demand by employers. This degree allows you to apply for provisional registration with the New Zealand Social Work Registration Board, and to practice in New Zealand and in many other countries in a wide range of social service fields. Some of these are children, young people, family and whānau support agencies, community development, Māori and iwi services, disability services, faith-based organisations, health and mental health social work in hospitals and primary care, social policy, and probation services.

[massey.ac.nz/social-work](https://massey.ac.nz/social-work)

# Bachelor Speech and Language Therapy with Honours

## BSpchLngThHons

Combines academic coursework with supervised clinical experience. You'll participate in work-integrated learning alongside practicing speech- language therapists.

4 years full-time | 480 credits  
Part-time available  
Available in the following location(s)

Auckland  
Manawatu  
Wellington  
Distance



You'll develop your skills working in a range of settings (early learning centres/kohanga reo, schools/kura, hospitals, rehabilitation facilities, and people's homes).

Topics studied include speech sound and language development in children and ways to support them when they have difficulty, fluency, voice, motor speech, and communication difficulties related to stroke and head injuries, along with individuals of all ages with feeding and eating difficulties). Cultural, professional and ethical issues are highlighted in the qualification. Students will also undertake a small research project in their final year.

**Career opportunities**

You'll be well equipped to support people of all ages who are experiencing communication and/or feeding and swallowing difficulties. As a qualified speech-language therapist, you can work in education, health, rehabilitation, and private practice. The qualification is accredited, which allows graduates to work in New Zealand and overseas.

[massey.ac.nz/speech-language-therapy](https://massey.ac.nz/speech-language-therapy)

# Bachelor of Sport and Exercise

## BSpEx

**In our fast-paced society, physical activity for health, wellbeing and fitness has never been more important. You'll gain knowledge and practical skills to make a difference to the way people live, play and perform.**

**34 years full-time | 360 credits**  
**Part-time available**  
 Available in the following location(s)

	Auckland	Manawatu	Wellington	Distance
Exercise Prescription				●
Physical Education				●
Sport Development				●

**Note:** Most first-year courses are available on the Manawatu Campus. Second and third-year courses are offered via distance. Some courses include optional on-campus contact workshops.

**Accreditation and ranking**

Register of Exercise Professionals	Exercise Prescription is accredited and graduates can register as exercise professionals with REPS.
Shanghai Ranking	Top 200 Global Sport Science Schools

You will get a broad, interdisciplinary understanding of sport and exercise, then choose to further specialise with a major in Physical Education, Exercise Prescription or Sport Development. Through a combination of theoretical understanding and practical application you will become knowledgeable in aspects of sport, exercise and physical activity as they relate to health, education, performance, organisation and promotion, including our sport and exercise practicum. This hands-on course can be based anywhere in New Zealand or overseas. You will apply your skills and knowledge as you prepare for entry to the workforce.

**Career opportunities**

You'll be prepared for a variety of careers in New Zealand's large sport and exercise industry. This might include the growing areas of community sport, fitness, professional sport, sport administration and wellness.

Potential careers and fields include:

- National and regional sporting organisations
- Sport events and recreation programmes
- Sport venues and facilities
- Community sports and fitness centres
- Sport, health and physical activity promotion
- Medical centres, hospitals, clinics and aged care facilities
- Sports trainer or coach of athletes and teams
- Teaching (further study required)
- School sport coordinators

[massey.ac.nz/sport-exercise](https://massey.ac.nz/sport-exercise)



# Bachelor of Veterinary Science

## BVSc

**Join the only university in New Zealand that offers a veterinary degree – a qualification ranked in the top 50 in the world. It's widely recognised internationally, so graduates may work in the UK, USA, Australia, Canada, Singapore and many other countries.**

**5 years full-time | 600 credits**  
Available in the following location(s)

Auckland  
Manawatū  
Wellington  
Distance

### Accreditation and ranking

American Veterinary Medical Association (AVMA)	Accredited. Last evaluation: 2021.
Australasian Veterinary Board Council (AVBC)	Accredited with minor deficiencies; graduates can work in New Zealand and Australia. Last evaluation: 2021
Royal College of Veterinary Surgeons (RCVS)	Accredited via the mutual recognition process operating with AVBC. Last evaluation: 2021

Our veterinary school was the first in the Southern Hemisphere to be accredited by the American Veterinary Medical Association (AVMA). This means the degree is recognised as equivalent to a Doctor of Veterinary Medicine degree from an accredited North American university.

This five-year (10 semester) qualification requires a good background in the sciences. The 'pre-selection' semester begins in late February and is only offered on the Manawatū campus. Depending on your performance in this phase, you may be selected to the 'professional phase' of the qualification, beginning in mid-July (a further 4.5 years). Selection is highly competitive, so focusing on great results in the pre-selection phase is vital.

### Career opportunities

Most graduates begin work in veterinary clinical practice providing high quality care for animals including a wide range of pets, production animals and horses. Some clinicians focus on speciality areas and undertake further study and qualifications. Some vets go on to non-clinical veterinary careers including animal disease investigators working on responses to disease outbreaks, food safety veterinarians, teaching and research at university or with pharmaceutical companies, and protecting New Zealand wildlife. The areas of One Health and One Welfare are becoming increasingly important with vets working to protect the health and welfare of animals, people and the environment.

The COVID-19 pandemic is an example of how the health of animals and humans is closely linked and affected by changes in the environment.

### Work experience

Before you embark on your veterinary studies, you will need to complete at least 10 days (minimum 80 hours) of veterinary work experience.

### Selection

The selection process is based on academic performance and performance in non-academic assessments. These assessments are held during the first semester of pre-selection; they consist of online assessment and in-person assessments held on the Manawatū campus. Please see the 'Entry requirements' tab of the Bachelor of Veterinary Science web page to access the pathway details appropriate for you.

**Note:** Students who are not selected can credit passed courses towards other Massey degrees and may reapply for selection in the future if they still want to become a veterinarian.

[massey.ac.nz/bvsc](https://massey.ac.nz/bvsc)





# Te Aho Tātairangi: Bachelor of Teaching and Learning Kura Kaupapa Māori

## BTchgLrnKKM

3 years full-time | 360 credits  
Up to 5 years part-time  
Available in the following location(s)

Auckland  
Manawatu  
Wellington  
Distance

Kei te mātua hiahia te pūnaha mātauranga o Aotearoa ki ngā raukura Māori e matatau ana ki Te Reo Māori, e ū ana hoki kia whakarauora ake i te reo Māori, ā, kia whanake ake hoki te whānau, te hapū me te iwi.

Ko tā tēnei kaupapa he whāngai atu i ngā mātāpono o Te Aho Matua e tika ana mō ngā Kura Kaupapa Māori me te ao mātauranga whānui.

Ko tā tēnei kaupapa anō, he whāngai atu i te mātauranga e tika ana me ngā pūkenga whakaako mō te akomanga mātauranga Māori mā Te Aho Matua kia tū pakari ai hei kaiwhakaako.

### Ngā ara umanga

Nā te āhuratanga motuhake o tēnei kaupapa ka para i ngā huarahi ki ngā umanga ngaio e whai nei i te reo Māori me te tikanga. Ka whai mātauranga ngā raukura me ngā pūkenga kia uru atu ki ngā Kura Kaupapa Māori me ngā kura tuatahi, kura auraki, ā, ka āhei ki te tono rēhitatanga i a Matatū Aotearoa e tū ake ai hei kaiwhakaako whai tohu takitaro.

**New Zealand's education system has an urgent need for Māori graduates, fluent in Te Reo Māori, committed to the revitalisation of the Māori language and to whānau, hapū and iwi development.**

This qualification delivers a sound theoretical grounding and practical knowledge to meet the requirements of Kura Kaupapa Māori (Māori language immersion schools) and the wider teaching profession, as well as the necessary knowledge and skills for a professional Māori medium initial teacher education, within the context of Te Aho Matua, to become effective kaupapa Māori practitioners.

### Career opportunities

The qualification opens avenues to any profession requiring Māori language and tikanga. Graduates obtain the knowledge and skills to enter teaching in Kura Kaupapa Māori and state primary schools, and will be able to apply for registration with the Education Council of Aotearoa New Zealand and to become a provisionally certificated teacher.

[massey.ac.nz/tat](https://massey.ac.nz/tat)



**YOUR OFFICIAL  
PATHWAY TO A MASSEY  
UNIVERSITY DEGREE**

For further information or  
to apply



# Te Ara Whakawhiti Massey University College

**MASSEY UNIVERSITY  
COLLEGE IS YOUR  
OFFICIAL PATHWAY  
TO A WIDE RANGE OF  
DEGREES AT ONE OF  
NEW ZEALAND'S TOP  
RANKED UNIVERSITIES**

## **WHY STUDY WITH US?**

### **Access to Massey University**

Enjoy full access to world-class services and facilities at Massey University from day one, including on-campus accommodation options.

### **Seamless transition to university**

Our courses are designed to improve your English language and academic skills for a seamless transition to your dream degree, so that you can succeed at university, and beyond.

### **Dedicated support and High-quality qualifications**

Experience the difference of small class sizes and one-on-one student support. Our qualifications are designed in partnership with Massey University and delivered by our highly qualified teachers at MUC.

### **Flexible start dates**

Three intakes per year so you can start with us when it suits you.

### **LOCATION**

Massey University College is located on Massey University's Auckland Campus. Modern, spacious and green, the Auckland campus is in the North Shore area of the city.

The campus is across the harbour from central Auckland, 15km away, and is located at the East Precinct, off the Albany Expressway.

### **QUALIFICATIONS**

We offer high-quality academic and English language pathways to enable you to transition straight into your degree at Massey University.

- Foundation pathways, see page 34.
- Diploma pathways, see page 33.
- Graduate Diploma pathways, see page 33.
- English language pathways, see page 49.
  - General English
  - English for Academic Purposes.

# Tohu Pōkaitahi / Pōkairua Certificates, diplomas and graduate diplomas

We also offer a variety of diplomas, certificates and graduate diplomas.

## PREPARATORY LEVEL

Qualification	Page
Certificate in Foundation Studies (Full Foundation)	33
Certificate of University Preparation Preparatory Level (Fast Track Foundation)	33

## UNDERGRADUATE CERTIFICATES AND DIPLOMAS

Designed for those who wish to participate in university study without having to commit to completing a large set of courses or those who wish to take a few interest courses at a university level. The qualification can be used as a stepping stone to the undergraduate diploma's, and from there to a Bachelor degree.

Qualification	Page
Certificate in Arts	36
Diploma in Arts	36
Certificate in Border and Biosecurity	37
Diploma in Border and Biosecurity	37
Certificate in Business Studies	38
Diploma in Business Studies	38
Certificate in Science and Technology	42
Diploma in Science and Technology	43
Certificate in Visual Arts	40
Diploma in Visual Arts	40
Diploma in Communication	39
Diploma in Facilities Management	42

## GRADUATE CERTIFICATES AND DIPLOMAS

Aimed at holders of a Bachelor level qualification or in some cases equivalent experience and/or learning, and in general are aiming to gain skills in addition to their original training area.

### Graduate Certificates

Graduate Certificate in Arts
Graduate Certificate in Emergency Management
Graduate Certificate in Science and Technology
Graduate Certificate in Teaching English as an Additional Language

### Graduate Diplomas

Graduate Diploma in Arts
Graduate Diploma in Aviation
Graduate Diploma in Business Studies
Graduate Diploma in Dairy Technology
Graduate Diploma in Design
Graduate Diploma in Emergency Management
Graduate Diploma in Environmental Health
Graduate Diploma in Facilities Management
Graduate Diploma in Fine Arts
Graduate Diploma in Information Sciences
Graduate Diploma in Journalism
Graduate Diploma of Learning and Teaching
Graduate Diploma in Logistics and Supply Chain Management
Graduate Diploma in Occupational Health and Safety
Graduate Diploma in Science and Technology

### Contact us

For more information options that interest you, get in touch.

Call: 0800 627 739

Text: 5222

Email: [contact@massey.ac.nz](mailto:contact@massey.ac.nz)





# Te Tumu Whakatipu

Te Tumu Whakatipu offers foundation and university preparation pathways, short courses, study tours, English language and professional tests, accelerate+, transition learning and our Wānanga Nohinohi Te Kunenga Children’s University programme.



## Certificate of University Preparation

### CertUniPrep

**If you have attempted NCEA Level 3 study or equivalent but narrowly missed gaining University Entrance, or are 20 years of age, you are eligible to enrol in the Certificate of University Preparation.**

**6 months full-time | 60 credits**  
**Up to 2 years part-time**  
 Available in the following location(s)

- Auckland
- Manawatu
- Wellington
- Distance

#### WHAT IS IT LIKE?

This certificate will prepare you for studying undergraduate qualifications. To complete the certificate you will do four courses – two compulsory courses that focus on academic study and critical thinking skills, and two elective courses from a range of academic areas such as Business, Creative Arts, Health, Humanities/Social Sciences and Science. On successful completion you will be eligible for admission to unrestricted undergraduate qualifications at Massey University and also at other New Zealand universities.

When enrolling for this qualifications please be aware that if you are intending to take an undergraduate degree with additional subject or portfolio requirements, you should contact the University for advice.

## Certificate in Foundation Studies

### CertFoundStud

**If you have completed NCEA Level 2 study or equivalent, you are eligible to enrol in the Certificate in Foundation Studies.**

**1 year full-time | 120 credits**  
**Up to 4 years part-time**  
 Available in the following location(s)

- Auckland
- Manawatu
- Wellington
- Distance

#### WHAT IS IT LIKE?

This certificate will give you the time needed to support your education journey and will prepare you for studying undergraduate qualifications.

To complete the certificate you will do eight courses – four compulsory courses that focus on academic study and critical thinking skills, and four elective courses from a range of academic areas such as Business, Creative Arts, Health, Humanities/Social Sciences and Science.

On successful completion you will be eligible for admission to unrestricted undergraduate qualifications at Massey University and also at other New Zealand universities. When enrolling for this qualification please be aware that if you are intending to take an undergraduate degree with additional subject or portfolio requirements, you should contact the University for advice.



## Certificate in Arts

### CertArts

**The world is full of challenging and wonderful places and studying the Arts is your passport to discover these.**

**6 months full-time | 60 credits**  
**Part-time available**

Available in the following location(s)



#### WHAT IS IT LIKE?

The Certificate is designed for students who wish to participate in university study without having to commit to completing a large set of courses. It is also available for those who wish to take a few interest courses at university level. It can be used as a stepping-stone to the Diploma in Arts, and from there to a Bachelor of Arts degree.

The Arts are the study of humanity: our history, beliefs, society, language, and culture. They ask questions about how we think, how we communicate, and how we interact with our environment. They teach us to make sense of the meaning behind what we are, what we do, and how we came to be that way.

#### You choose what you study

Study what you enjoy and explore subject areas that spark your interest. You can choose courses from 30 subjects areas in College of Humanities and Social Sciences.

#### Do it your way

This Certificate is extremely flexible, so you can include courses from different disciplines, including one from outside the College of Humanities and Social Sciences.

#### Why study Arts at Massey?

Massey offers passionate and friendly lecturers, a world-class distance-learning qualification and access to multi-media learning materials.

We will prepare you to be the sort of inquisitive and imaginative thinker able to lead New Zealand into the future and help solve some of our big problems.

## Diploma in Arts

### DipArts

**Consists of eight courses from the Bachelor of Arts offering this diploma is often used as a springboard to completing your full Bachelor of Arts degree.**

**1 year full-time | 120 credits**  
**Part-time available**

Available in the following location(s)



#### Study what you enjoy and explore subject areas that spark your interest

You can complete the Diploma in Arts with or without an endorsement in a subject area. Completing the diploma without endorsement lets you sample different subjects and build a qualification that reflects your own particular interests.

If you want to take an endorsement, you can choose from 25 subjects from the Bachelor of Arts degree, and major in the one that sparks your passion.

The Diploma is extremely flexible, and you can include courses from many disciplines, including some from outside the humanities.



## Certificate in Border and Biosecurity

### CertBBiosec

**Will give you a credible and contemporary qualification to enhance your career prospects in border, biosecurity or primary industries.**

**1 year part-time**  
**Not available for full-time study**  
Available in the following location(s)

Auckland  
Manawatu  
Wellington  
Distance

#### FOLLOW YOUR INTERESTS

You can choose from a wide range of subject areas including plant and animal science, border security, biosecurity, organisational behaviour, law, globalisation and trade, data management and decision making, logistics and supply chain management.

#### Study to suit you

Your first year will include two compulsory courses relating to border and biosecurity studies. The rest of your qualification will be made up of elective courses that you choose to suit your interests.

Massey excels at distance learning, and all your teaching will be provided by distance and/or block courses. This offers flexibility for students with jobs or other commitments.

You'll learn about:

- the concepts of border security and biosecurity
- contemporary border and biosecurity issues and practices, and
- the implications of these for countries' national security and the economic and social wellbeing of their people.

#### Protect New Zealand's economy, taonga and way of life

Biosecurity is a multi-disciplinary practice concerned with protecting valued life from pests and diseases. New Zealand's primary industries are critical to the economy on a local scale and play an important role in food security on a global one. Protecting the biodiversity of indigenous flora and fauna is equally important. The qualification has a distinctly New Zealand focus while maintaining global relevance.

## Diploma in Border and Biosecurity

### DipBBiosec

**2 years part-time | 120 credits**  
**Not available for full-time study**  
Available in the following location(s)

Auckland  
Manawatu  
Wellington  
Distance

Gain specialist knowledge in one or more of the following areas (see online for full detail):

- advanced theoretical frameworks and government policies for a range of biosecurity challenges
- the sources of New Zealand law, legal principles and basic rules of interpretation
- the range of security challenges that face global and New Zealand borders
- the evaluation of international transportation systems and the global food system from different perspectives
- the fundamental features of the main classes of micro-organisms, insects, plants and/or animals and their relevance to biosecurity practices.



# Certificate in Business Studies

## CertBusStuds

Take the first step towards a degree in business. Follow your interest in a particular subject area, or study a range of courses for personal interest.

6 months full-time | 60 credits  
Part-time available  
Available in the following location(s)

- Auckland
- Manawatu
- Wellington
- Distance

### WHAT IS IT LIKE?

Massey has also partnered with Kaplan Professional to offer a financial services pathway, for those needing to meet the new requirements for providing financial advice in New Zealand, within the Certificate in Business Studies. It is ideal if you wish to pursue an interest in a particular subject area or study a range of courses for personal interest, and is an ideal stepping stone to degree level study.

# Certificate in Financial Advice

## CertArts

Delivered in conjunction with Kaplan Professional, Australia's leading and largest provider of financial services education. It combines introductory specialist knowledge with financial advice skills to prepare you for entry into the financial advice industry.

12 weeks of full-time study  
Part-time available  
Available in the following location(s)

- Auckland
- Manawatu
- Wellington
- Distance

### WHAT IS IT LIKE?

The qualification is mapped to the New Zealand Certificate in Financial Services (Level 5), Version 2 and meets the standard required by the Code of Professional Conduct for Financial Advice Services in New Zealand.

In addition to the core subject, Introduction to Financial Advice, you can choose to focus on a particular knowledge area by tailoring your study to specialise in a specific area of interest, or to align with your career aspirations. You can choose from four (4) areas of focus:

- Investment
- Life, disability and health insurance
- General insurance
- Residential property lending.

You must complete a total of 60 credits in order to successfully meet the completion requirements of this qualification.



# Diploma in Business Studies

## DipBusStuds

**Designed for students who want a formal university qualification but do not want to undertake a full degree qualification. It is ideal if you wish to pursue an interest in a particular subject area or study a range of courses for personal interest.**

**1 year full-time | 120 credits**  
Part-time available  
Available in the following location(s)

Auckland  
Manawatu  
Wellington  
Distance



### Accreditation and ranking

QS	Top 350 universities for business and management
Shanghai Ranking	No. 1 in New Zealand for business administration

### DIPLOMA IN BUSINESS STUDIES WITHOUT SPECIALISATION

The majority of available courses are those listed for the Bachelor of Business and its majors. This is a flexible qualification that can be completed in one year full-time, and may be a stepping-stone to a Bachelor of Business.

### DIPLOMA IN BUSINESS STUDIES (FINANCIAL ADVICE)

The endorsement in Financial Advice is intended for students who have completed the Certificate in Financial Advice. You'll gain introductory specialist knowledge and financial advice skills to prepare you for entry into the financial advice industry.





# Diploma in Communication

## DipC

**Designed to introduce students to a selection of disciplines in the communication field.**

**1 year full-time | 120 credits**  
**Part-time available**  
Available in the following location(s)

Auckland  
Manawatu  
Wellington  
Distance



### Accreditation and ranking

QS	Top 100 universities for Communication and Media
Shanghai Ranking	No. 1 in New Zealand, and in the top 150 universities in the world for communication

### WHAT IS IT LIKE?

It provides students with employment pathways into fields including:

- Advertising
- Arts administration
- Brand management
- Communication management
- Digital marketing
- Event management
- Marketing/communications management, or
- Media planning/buying
- Public relations
- Relationship management
- Social media advising
- Web content management.

### OPTIONS FOR STUDY

The DipC offers a wide range of options for study, including:

- Communication Theory and Practice
- Creative Communication
- Introduction to Journalism
- Introduction to Marketing
- Introduction to Media Studies
- Language and Communication
- Media skills
- Tū Kupu: Writing and Inquiry.



## Certificate in Creative Arts

### CertCreativeArt

A flexible qualification that will introduce you to the basics of art and design – creative thinking, visual communication, specialist skills, and critical awareness.

6 months full-time | 60 credits  
Part-time available  
Available in the following location(s)

Auckland  
Manawatu  
Wellington  
Distance

#### WHAT IS IT LIKE?

The Certificate comprises four courses from the first year of our Bachelor of Fine Arts, Bachelor of Design, Bachelor of Screen Arts with Honours and Bachelor of Māori Visual Arts qualifications.

You'll study with art and design degree students in a range of studio and lecture-based courses. These exciting electives cover everything from critical and contextual studies, to social media, painting, and digital fabrication.

## Diploma in Creative Arts

### DipCreativeArts

You'll study with art and design degree students in a range of studio and lecture-based courses covering everything from critical and contextual studies, to social media, painting, and digital fabrication.

1 year full-time | 120 credits  
Part-time available  
Available in the following location(s)

Auckland  
Manawatu  
Wellington  
Distance

#### WHAT IS IT LIKE?

It's a flexible qualification with lots of choice. You'll be introduced to the basics of art and design:

- creative thinking
- visual communication
- specialist skills
- critical awareness.

No portfolio is required, just passion.

The Diploma is made up of eight courses from the first year of our Bachelor of Fine Arts, Bachelor of Design, Bachelor of Screen Arts with Honours and Bachelor of Māori Visual Arts qualifications.

#### Further study

Studying courses in the Diploma in Creative Arts can be a good way to develop your portfolio for entry to the Bachelor of Design with Honours or Bachelor of Fine Arts with Honours.



# Diploma in Facilities Management

## DipFM

**Facilities management is the final step in the design-build-manage cycle of construction. As a facilities manager you'll oversee the operational management and maintenance of buildings once they're built to ensure our public spaces and workplaces are safe, healthy, sustainable, and productive. You'll contribute significantly to the success of an organisation by making sure buildings are fit-for-purpose.**

**1 year full-time | 120 credits**  
Part-time available  
Available in the following location(s)

Auckland  
Manawatu  
Wellington  
Distance

### WHAT IS IT LIKE?

The Diploma is aimed at school leavers and also at junior level facilities management professionals. For those already in the workforce, it will assist you to underpin your skills and practice with foundational knowledge of a rapidly growing sector.

You'll learn about operational maintenance and management of built facilities. Skills you'll learn include:

- facilities management planning
- asset management
- health and safety
- teamwork and communication
- business and financial skills
- technology and innovation.

The qualification also covers a range of facilities, including:

- hospitals
- commercial office blocks
- educational institutions
- industrial buildings
- key support services.

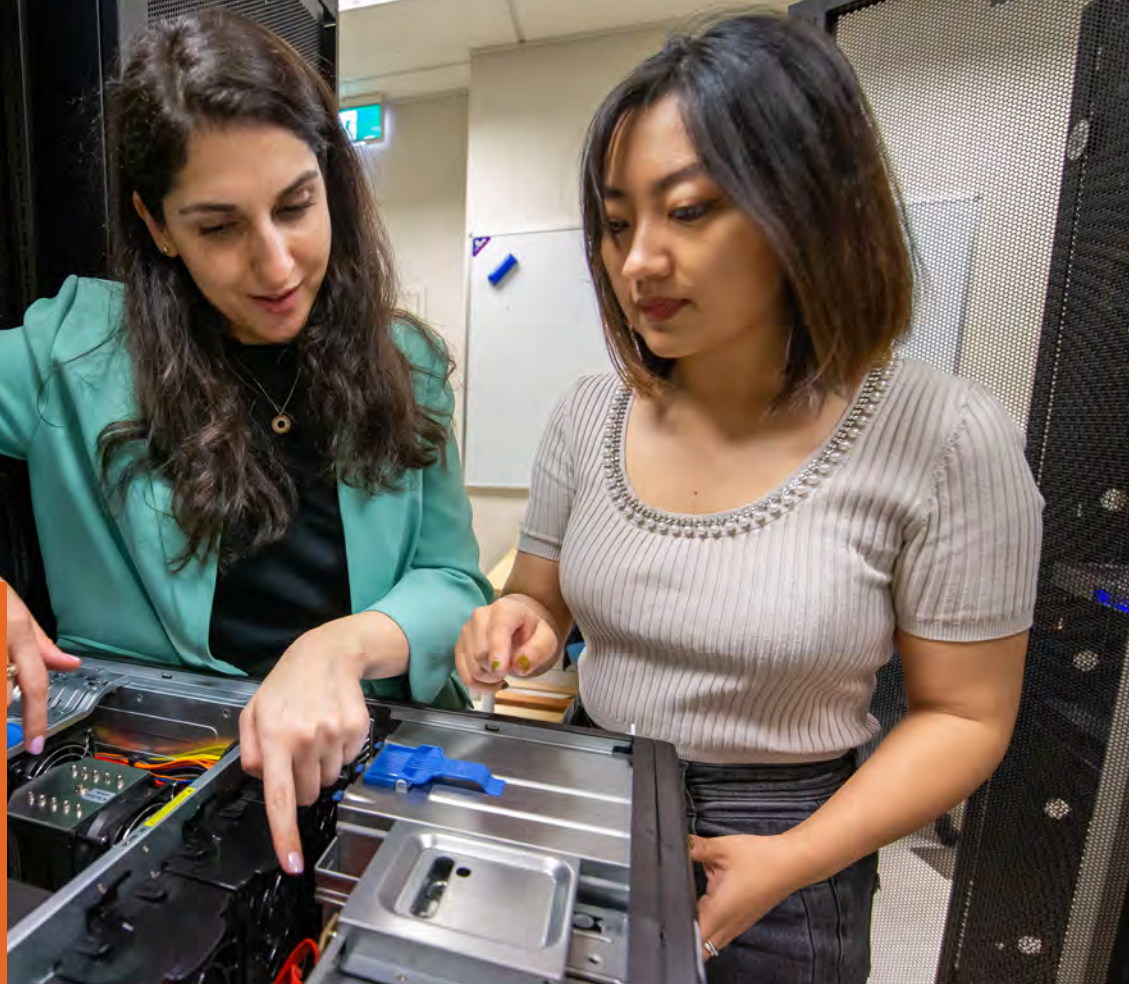
### Research-led learning from industry experts

Your lecturers are professional experts in the fields of construction, facilities management, architecture, business, engineering, IT and other industries.

Our lecturers are active in research, ensuring you will be at the cutting edge of this fast-growing industry.

## WANT TO STUDY SCIENCES OR TECHNOLOGY?

Use our pathway tool to find out what study you may need to do before you start your degree.



## Certificate in Science and Technology

### CertScTech

**If you are under 20 and have University Entrance but are missing a few important subjects, enrol in the Certificate in Science and Technology with the subjects you need.**

**6 months full-time | 60 credits**  
Part-time available  
Available in the following location(s)

Auckland  
Manawatu  
Wellington  
Distance



### WHAT IS IT LIKE?

This Certificate is a flexible qualification that allows students to undertake a shorter course of study at university level than is required by a three-year bachelor's degree or one-year diploma.

Students may elect to have courses passed under the certificate qualification credited to a bachelor's degree or diploma provided the courses comply with the regulations of the degree or diploma in question. If students intend to cross-credit more than 15 credits, the Certificate must be surrendered to the University.

The Certificate is equivalent to one semester of full-time study, but it will often be taken on a part-time basis. The course is open to anyone who has gained admission to Massey University, but in some cases specific courses may require a subject background at NCEA Level 3.

## Diploma in Science and Technology

### DipScTech

**A flexible qualification that allows you to undertake a shorter course of study at university level than that required by a three-year bachelor's degree.**

**1 year full-time | 120 credits**  
Part-time available  
Available in the following location(s)

Auckland  
Manawatu  
Wellington  
Distance



### WHAT IS IT LIKE?

You may elect to have courses passed under the diploma qualification credited to a bachelor's degree, provided the courses comply with the regulations of the degree in question.

The Diploma is equivalent to one year of full-time study, but it will often be taken on a part-time basis. The Diploma is open to anyone who has gained admission to Massey University, but in some cases specific courses may require a subject background at level 3 NCEA.



# Kaupapa ako Recommended and required subjects

## ALL STUDENTS MUST HAVE A UNIVERSITY ENTRANCE QUALIFICATION

### IN ADDITION TO THIS

- 1 Some degrees have 'required' subjects at year 13 level which are necessary to be eligible to enrol.
- 2 Other degrees have 'recommended' subjects which are not essential but which will help students prepare for studying the subject at university.
- 3 Some also have selected entry criteria. International students must meet the same criteria along with achieving 6.0 IELTS, with no band lower than 5.5, if they are from a non-English speaking background.

## Arts

### Bachelor of Arts

No specific subject requirements

### Bachelor of Resource and Environmental Planning

No specific subject requirements

Geography	Useful
Design	
Business	
History	
Māori Studies	
Science	

## Aviation

### Bachelor of Aviation

A language rich subject is required with either:

NCEA	14 credits in Level 3
CIE	C grade at A or AS level
IB	5 points in standard level English
Physics	Strongly recommended
Calculus	recommended
Statistics	Recommended

### Selected entry requirements

ADAPT test, interview, pilot aptitude assessments, plus additional requirements

### English as a second language

Achieve an IELTS score of 6.5 – no band lower than 6.0

### Bachelor of Aviation Management

Statistics	Recommended
Accounting	Useful
Economics	
Business Studies	

A language-rich subject to develop critical thinking and formal writing skills:

English	Useful
Media Studies	
History	

## Business

### Bachelor of Accountancy

No specific subject requirements

### Bachelor of Business

Accountancy	Useful
Economics	
English	

## Communication

### Bachelor of Communication

No specific subject requirements

## Creative Arts

### Bachelor of Commercial Music

#### Practice major

A pre-enrolment audition is required

#### Technology and Industry majors

Pre-enrolment interview will be offered

### Bachelor of Screen Arts with Honours

No specific subject requirements

Basic understanding of digital media	Recommended
--------------------------------------	-------------

### Bachelor of Design with Honours

### Bachelor of Fine Arts with Honours

### Bachelor of Māori Visual Arts

Selected entry requirements

NCEA automatic entry requires

Approved art, design or technology subject	Endorsed with Excellence in NCEA Level 2
--	--

**Note:** This is subject to achieving University Entrance with 14 credits in an approved art, design or technology

CIE automatic entry requires

Approved art, design or technology subject AS grade A or B

**Note:** Entry would be confirmed once the student has achieved university entrance.

#### Submit a portfolio of work

Students who do not qualify under the automatic entry criteria will need to submit a portfolio of work.

#### Informal interview

An informal interview are asked of applicants in Fine Arts and Māori Visual Arts.

## Education

### Te Aho Tatairangi: Bachelor of Teaching and Learning Kura Kaupapa Māori

Selected entry requirements

Fluency in Te Reo Māori, referees, criminal record and safety checks, interview.

## Health

### Bachelor of Health Science

See [massey.ac.nz/health](http://massey.ac.nz/health) for details.

### Bachelor of Nursing

Selected entry requirements

Referees, a CV, and a criminal record check.

#### English as a second language

Achieve an IELTS score of 6.5 on every band.

### Bachelor of Social Work

Selected entry requirements

CV, Criminal record check, referees, written statement

#### AND

Must meet the requirements set down by the Social Worker Registration Act 2003 in terms of being a fit and proper person to practise social work.

#### English as a second language

Achieve an IELTS score of 6.5 on every band.

#### OR

TOEFL internet-based test score of 85 or higher

#### Interview

Entry interview may be required.

### Bachelor of Speech and Language Therapy with Honours

NCEA, Level 3 or higher

English	14 credits
Biology	16 credits or more in one of the following subjects
Chemistry	
Physics	
Calculus	
Statistics	

#### CIE

Biology	B grade at A level in any one of the following subjects
Chemistry	
Physics	
Calculus	
Statistics	

#### PLUS

English	C grade at A Level
---------	--------------------

#### IB

Biology	5 points at higher level in one of the following subjects
Chemistry	
Physics	
Calculus	
Statistics	

#### PLUS

An IB score of 28

#### PLUS

English	3 points at higher level
---------	--------------------------

#### OR

English	5 points at standard level
---------	----------------------------

These requirements guarantee entry. Students who don't meet these will still be considered on a case by case basis.

### Bachelor of Sport and Exercise

No specific subject requirements

### Exercise Prescription and Physical Education majors

Physical Education Useful

Biology

Statistics Recommended

### Bachelor of Sport Management

No specific subject requirements

# Sciences

## Bachelor of Agribusiness

Biology	Strongly recommended
Chemistry	
Statistics	
Agriculture	Useful
Economics	
English	
Horticulture	
Geography	

## Bachelor of Agricultural Science

Biology	Strongly recommended
Chemistry	
English	
Statistics	Recommended

**English is a second language requirements**  
Achieve an IELTS score of 6.5 – no band lower than 6.0

## Bachelor of Animal Science

Biology	Strongly recommended
Chemistry	
English	
Statistics	Recommended

## Bachelor of Construction

Calculus	Recommended
Statistics	
Physics	Useful
Economics	
Graphics	

\* Chemical and Bioprocess Engineering major only  
These requirements guarantee entry. Students who don't meet these will still be considered on a case by case basis.

## Bachelor of Food Technology with Honours

**NCEA, Level 3:**

Mathematics	including standards 91577, 91578, 91579
16 credits	
Physics	including standards 91523, 91524, 91526
16 credits	

### PLUS

Chemistry	including standards 91390, 91391, 91392
14 credits	

### CIE

Mathematics	C grade at A Level in each
Physics	

### PLUS

Chemistry (Excludes General Paper)	C grade at A Level
------------------------------------	--------------------

### IB

Mathematics	29 points including 5 points at higher level in each
Physics	

### PLUS

Chemistry	5 points at higher level
-----------	--------------------------

These requirements guarantee entry. Students who don't meet these will still be considered on a case by case basis.

## Bachelor of Horticultural Science

Biology	Strongly recommended
Chemistry	
English	
Statistics	Recommended

**English is a second language requirements**  
Achieve an IELTS score of 6.5 – no band lower than 6.0

## Bachelor of Information Sciences

Calculus	Recommended
Statistics	

<b>Bachelor of Science</b>	Biology	Chemistry	Physics	Maths/Statistics	Geography
Chemistry	○	●	○	○	
Computer Science				●	
Earth Science		○	○	○	
Ecology and Conservation	●	○		○	
Environmental Science	○	○		○	
Exercise and Sport Science	●	○	○	○	
Human Nutrition	●	●		○	
Mathematics				●	
Microbiology	●	●		○	
Molecular Cell Biology	●	●		○	
Plant Science	●	●		○	
Psychology				○	
Statistics				●	
Zoology	●			○	

● Strongly Recommended  
○ Recommended

## Bachelor of Veterinary Science

Entry into the veterinary pre-selection semester is open to all applicants who meet university entrance standards. In order to give yourself the best chance of success in being selected to the professional phase, applicants have completed the following (or their equivalent) before commencing this phase

Biology	Strongly recommended
Chemistry	
At least 14 credits	
Physics and/or Mathematics	Strongly recommended
At least 14 credits in NCEA Level 2	

### Professional phase assessment

Passing all the pre-requisite courses, completing 40 hours of veterinary work experience, grades, and performance in the other selection assessments

### English is a second language requirements

Achieve an IELTS score of 7.0 in every band for selection into the professional phase.

# Paearu whakauru Admission requirements

## INTERNATIONAL STUDENTS

You will need to meet both the academic and English language requirements of your intended qualification.

Scan the QR code for the specific criteria for pre-degree and undergraduate level applicants, and details on how to apply.



## DOMESTIC UNDERGRADUATE ADMISSION

**Massey University includes a preferential admission scheme in our policies for admission to undergraduate qualifications for domestic students. This scheme helps us manage our enrolments if courses are over subscribed, but it is likely you will be offered a place in your qualification of choice.**

### UNDER 20 YEARS OF AGE

You will be given preference if you gain University Entrance and score equal to or above the Preferential Entry Score of 140 points and meet the specific requirements for selection where required.

### 20 YEARS OF AGE OR OLDER

We must make selection decisions because your qualification of choice could be over-subscribed. However, we may give preference to students from under-represented groups when making selections into qualifications.

Students who achieve admission to university with a rank score lower than the Preferential Entry Score, or who have no rank score, are still eligible to apply, and it is anticipated that most will be admitted to a qualification. If there are more applicants for a qualification than can be accommodated, the rank score may be used, together with any stated selection criteria for the course concerned. This will be to prioritise applicants or to determine whether a place can be offered in an alternative qualification.

Some qualifications have specific requirements for selection (see C on your left). Please refer to the specific requirements for each qualification listed from page 43 onwards.

## HOW YOUR APPLICATION IS ASSESSED

- A YOUR ELIGIBILITY FOR UNIVERSITY ENTRANCE**  
Through NCEA Level 3 or another recognised admission method explained below;
- B YOUR RANK SCORE**  
Based on educational background, using the methods explained below. We will calculate a rank score for you.
- C ANY OTHER SPECIFIC REQUIREMENTS FOR SELECTION**  
For example an assessment of your portfolio of work for the Bachelor of Design with Honours.



# NATIONAL CERTIFICATE IN EDUCATIONAL ACHIEVEMENT

We strongly encourage you to take achievement standards in approved subjects at Level 3 to help you to achieve the Guaranteed Entry Score, and to provide you with the best preparation for university studies.

VISIT NZQA WEBSITE FOR MORE INFORMATION



## TO BE AWARDED UNIVERSITY ENTRANCE (UE) YOU NEED

- 1 **NCEA LEVEL 3**
- 2 **3 SUBJECTS AT LEVEL 3\***  
14 credits each of three approved subjects
- 3 **LITERACY**  
10 credits at Level 2 or above, made up of:
  - 5 credits in reading, and
  - 5 credits in writing
- 4 **NUMERACY**  
10 credits at Level 1 or above, made up of:
  - specified achievement standards, or
  - a package of three numeracy unit standards (26623, 26626, 26627 – all three required).

The following may be able to be used toward meeting the NCEA Level 3 entrance standard

- 14 Level 3 credits in:
- NZIM Certificate in Management, or
  - NZIM Certificate in Small Business Management, or
  - A completed Young Enterprise Certificate

**Note:** Applications are assessed on a case-by-case basis. Students should provide information about any such credits when they apply.

\* Students completing UE during or after 2022 may have amended NCEA requirements applied. Please refer to the NZQA website for further information on these specific requirements.

## ADMISSION TO YOUR CHOSEN QUALIFICATION VIA NCEA

The Guaranteed Entry Score from NCEA, for the majority of undergraduate qualifications, is 140 points.

Your rank score will be calculated by:

- 1 **YOUR BEST 80 CREDITS**  
We identify your best 80 credits at NCEA Level 3 or higher over a maximum of five approved subjects;
- 2 **AWARDING POINTS FOR CREDITS**

Excellence	rewards four points
Merit	rewards three points
Achieved	rewards two points

### Other things to note:

- Achievement standards in approved subjects will be counted.
- Achieve fewer than 80 credits  
The score will be based on those credits you have gained.
- Achieve more than 80 credits  
The credits achieved with the highest level of achievement will be used.
- Only five approved subjects are included in the calculation.
- A maximum of 24 credits per subject are used and any credits above this limit are excluded.
- Level 3 subject requirements for a particular qualification may be met in Year 12.
- NCEA Level 3 credits achieved before Year 13 may be counted toward the 80 best credits required for ranking purposes.
- Credits obtained in any required subjects do not have to be among the best 80 credits required for ranking purposes.

## RANK SCORE CALCULATION

See examples of how to calculate a rank score for NCEA in these tables.

Media Studies (16 credits) Achievement	Results	Calculation	Rank score
Achieved	16	6 x 2 points	32
<b>Total rank score</b>			<b>32</b>

English (22 credits) Achievement	Results	Calculation	Rank score
Excellence	6	6 x 4 points	24
Merit	8	8 x 3 points	24
Achieved	4	4 x 2 points	8
Achieved	4	4 x 2 points	8
<b>Total rank score</b> (not counted in 80 best credits)			<b>56</b>

Social Studies (14 credits) Achievement	Results	Calculation	Rank score
Achieved	14	14 x 2 points	28
<b>Total rank score</b>			<b>28</b>

History (24 credits) Achievement	Results	Calculation	Rank score
Excellence	8	8 x 4 points	32
Merit	8	8 x 3 points	24
Achieved	8	8 x 2 points	16
<b>Total rank score</b>			<b>72</b>

Statistics and Modelling (12 credits) Achievement and unit	Results	Calculation	Rank score
Merit	8	8 x 3 points	24
Achieved (unit)	4	4 x 2 points	8
<b>Total rank score</b> (not counted in 80 best credits)			<b>24</b>

**TOTAL RANK SCORE FROM NCEA RESULTS**

$$56 + 72 + 32 + 28 + 24 = 212$$

## DISCRETIONARY ENTRANCE

### 1 QUALIFIED FOR ADMISSION

You are a person under the age of 20 years who does not meet the University Entrance standard

#### BUT

**A** Is a citizen or a holder of a residence class visa of New Zealand or Australia\*

**B** Is at least 16 years of age and under 20 on the first day of the semester in which they wish to study

#### AND

**C** Has not otherwise qualified for admission may apply for Discretionary Entrance.

\* Australian applicants' most recent year of schooling must have been in New Zealand.

### 2 ACADEMIC RECORD

Applicants are expected to have a very good academic record. The normal criteria for consideration are:

**A** Has received secondary schooling to at least New Zealand Year 12 level (or its equivalent overseas)

#### AND

**B** Has achieved a minimum of 72 credits at NCEA Level 2 including 14 credits in each of four subjects (three of which must be approved subjects) with a majority of credits at Merit or Excellence

#### AND

**C** Has met the literacy and numeracy standards required for University Entrance, or their equivalents.

### 3 A NOMINATED QUALIFICATION

Discretionary Entrance is granted to a nominated undergraduate qualification.

### 4 MID-YEAR ADMISSION

Persons who attempt to qualify for University Entrance in Year 13, but who fail to do so, may be considered for mid-year admission in the year following their NCEA assessment. Admission will be at the discretion of the University.

### 5 SUMMER SCHOOL ADMISSION

A person studying at a New Zealand secondary school, who is attempting to qualify for entrance to University, may apply for Discretionary Entrance in the same year for the purpose of enrolling in courses offered in a Summer School by a university.

#### Note:

- Any person admitted under this regulation who does not, in the following January, meet the University Entrance standard, will be required to withdraw from the University and may re-apply for admission at mid-year.
- Students required to withdraw may complete their Summer School qualification before doing so, but any courses passed will not be credited to a qualification until University Entrance is gained.

## CAMBRIDGE INTERNATIONAL EXAMINATIONS

You are qualified for admission to University if you have obtained a minimum of 120 points on the UCAS Tariff at A or AS Level, including:

### 1 A MINIMUM GRADE OF D

For each of at least three different subjects equivalent to those on the approved subject list at A or AS level (excluding Thinking Skills)

#### PLUS

### 2 LITERACY AND NUMERACY REQUIREMENTS

**A** – An E grade or better in any one of the AS English Language, Language and Literature in English, Literature in English.

**B** – A grade of D or better in IGCSE or GCSE mathematics, or any mathematics passed at AS level.

#### OR

### 3 LITERACY AND NUMERACY

– as prescribed for University Entrance with NCEA.

### ADMISSION TO YOUR CHOSEN QUALIFICATION VIA CIE

Your UCAS Tariff points will be calculated by:

- Identifying a maximum of six subject units from your last two years of study, at AS or A level, from subjects on the approved list;
- Using the UCAS Tariff to calculate points for these subjects based on grades achieved, on the basis of the table below.

Level	A	A	B	C	D	E
A	140	120	100	80	60	40
AS	–	60	50	40	30	20

#### Note:

- The CIE rank score is only calculated over approved subjects so may differ from the UCAS tariff used for University Entrance.
- A subject passed at A level counts as two subject units.
- If you have passed more than six subject units, the subjects with the best level of achievement will be used to calculate the rank score.
- If you achieve fewer than six subject units, the score will be based on those you have achieved.

### RANK SCORE CALCULATION

See an example of how to calculate a rank score for CIE in this table.

Subject	Level	Subject units	Grade	Rank score
English	A	2	C	80
Mathematics	A	2	D	60
Accounting	AS	1	B	50
Economics	AS	1	B	50
Geography	AS	1	B	*
<b>Total rank score</b>				<b>240</b>

\* Not counted in best six subjects.

## SELECTED ENTRY QUALIFICATIONS

There are a few degrees that require you to go through a selection process before you can enrol. We recommend you get your application under way well before 1 October for these qualifications, to allow time for the selection process.

### A A PORTFOLIO ENTRY FOR

- Design
- Fine Arts
- Māori Visual Arts

### B AN AUDITION FOR

- Commercial Music Practice major

### C PRE-ENROLMENT INTERVIEW WILL BE OFFERED FOR

- Commercial Music Technology major
- Commercial Music Industry major

### D OTHER QUALIFICATIONS WITH SELECTION REQUIREMENTS INCLUDE BACHELOR DEGREES IN

- Aviation
- Nursing
- Social Work
- Speech and Language Therapy

### E GRADUATE DIPLOMAS IN

- Design
- Fine Arts
- Teaching.

## ENGLISH LANGUAGE REQUIREMENTS

All students studying at Massey University are expected to be able to write grammatically correct English, read English actively and with understanding, listen to and discern key points in spoken English and speak English freely and clearly.

All international students whose first language is not English will be required to provide satisfactory evidence of their English language proficiency in the form of an academic IELTS or TOEFL score or equivalent.



**Note:** Procedures also exist for those students who wish to submit written work or examinations in Māori.

## INTERNATIONAL BACCALAUREATE

You are qualified for admission to university if you have been awarded the full International Baccalaureate Diploma (a minimum of 24 points).

## ADULT ADMISSION

You are qualified for admission to university if you are a New Zealand citizen or holder of a New Zealand residence class visa, you do not have the entrance qualifications described above, but you will be at least 20 years of age by the final date for acceptance of late enrolment applications for the enrolment period in which your proposed course of study commences.

### ADMISSION TO YOUR CHOSEN QUALIFICATION VIA ADULT ADMISSION

Applicants who are 20 years of age or older, and who do not have a University Entrance qualification, are eligible for admission to their chosen qualification, provided that places are available or where places are limited, that the applicant is selected for a place.

#### Self-assessment tools

To assess your readiness for university, we offer a range of online tools under our *skills needed for study* section. Visit [massey.ac.nz/studyskills](https://massey.ac.nz/studyskills).

#### Short preparation courses

We offer short university preparation courses that are an excellent way for mature students to refresh study skills.

#### Specific subject short courses

Short courses such as Physics and Chemistry, are available if you require targeted preparation. We also offer bridging qualifications to thoroughly prepare you for undergraduate study.

## OTHER METHODS

### A Studied overseas or at another New Zealand tertiary institution

We will assess your admission on a case-by-case basis. Information on equivalent admission qualifications from other countries is available at [massey.ac.nz/international](https://massey.ac.nz/international).

### B International students

Those who have successfully complete the Certificate of University Preparation or the Certificate in Foundation Studies will qualify for university entrance.

### C Domestic students

If you are under the age of 20 years, and you do not qualify under any of the methods above, we recommend that you enrol in one of our bridging qualifications.

## ADMISSION TO GRADUATE QUALIFICATIONS

Graduate qualifications include Graduate Diplomas and Graduate Certificates.

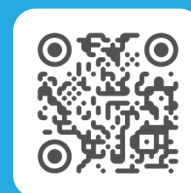
- 1 Entry requirements differ by qualification; please refer to the admission requirements for your qualification of choice.
- 2 Generally, requires applicants to hold an undergraduate degree, although some graduate qualifications allow admissions based on professional experience.

#### Contact us

Call: 0800 627 739

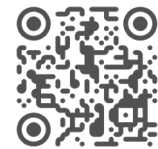
Text: 5222

Email: [contact@massey.ac.nz](mailto:contact@massey.ac.nz)



# Ngā ratonga mā ngā akonga Student support

VISIT THE STUDENT LIFE  
SECTION ON OUR WEBSITE



## TAUTOKO AKO, TAUMAHI ME NGĀ ARATOHU

### STUDY SUPPORT

Whether you're a distance student or study at a campus, support and advice is available to you. If you're looking for help with study options, accommodation, or if you just want to meet like-minded students check out the following services.

#### ONLINE TOOL SET

Massey offers a range of online tools to help you plan your studies and to provide you with support as you study.



Scan to learn more  
[massey.ac.nz/academic-support](https://massey.ac.nz/academic-support)

#### LEARNING SUPPORT

Each campus has a Centre for Learner Success, providing academic learning support services to help students succeed in their university study. Learning and writing consultants can provide feedback on your assignments and help you prepare for exams, manage your time and study effectively. You can book a free consultation online or in person, access resources, ask questions about academic writing on the Q&A forum, submit draft assignments to the pre-reading service for written feedback, and attend or view free online workshops throughout the year.



Scan to learn more  
[learning.massey.ac.nz](https://learning.massey.ac.nz)

#### STUDY RESOURCES

Our Online Writing and Learning Link (OWLL) links students to workshops, appointments, and a wide range of resources for writing assignments, preparing for assessments, referencing correctly and studying effectively.



Scan to learn more  
[owll.massey.ac.nz](https://owll.massey.ac.nz)

#### COMPUTER ACCESS ON CAMPUS AND AT HOME

Students have access to a range of services including software, printing, free web mail, free internet access and student home (network) drives for document storage.



Scan to learn more  
[massey.ac.nz/it-services](https://massey.ac.nz/it-services)

#### LIBRARY SERVICES TE PUTANGA KI TE AO MĀTAURANGA

Massey University Library provides support for your academic pursuits, whether you are studying at Albany in Auckland, Palmerston North in the Manawatū, Wellington, or by distance. As a student, you have access to a wide variety of resources and online guides. You can also reach out to a librarian via email, phone or in-person at any of our campus libraries.

Each campus library provides a Computer Zone (Wāhi Rorohiko) for students to use. Free Internet access is available, along with access to various software applications and IT-related support.



Scan to learn more  
[massey.ac.nz/library](https://massey.ac.nz/library)

NGĀ WHARE HĀKINAKINA,  
RĒHIA HOKI

## SPORT AND RECREATION

**Sports and recreation centres are located on each of Massey's three campuses, with special rates for students.**

Each well-equipped centre has a gym and a range of health and fitness facilities, group classes and programmes, with qualified fitness instructors. They can help with your fitness goals through fitness appraisals and designing exercise programmes that are exciting, challenging and fun. All three campuses also host a range of social sports leagues and club sports.

### Manawatū campus

Features an all-weather equestrian arena, community athletics track, 11 rugby and football fields, basketball, squash and racket sport courts, Les Mills group classes and yoga.

### Auckland Recreation Centre

Is home to the Massey University Cricket Centre, a physiotherapy clinic, and a café.

### Wellington campus

Offers a boutique group training experience, bike sharing and more.



**Scan to learn more**  
[massey.ac.nz/recreation](https://massey.ac.nz/recreation)



### COURSE ADVISERS

Course advisers provide information to all prospective students, whether you're a school-leaver or coming to university after a break. Choosing the right courses is an important first stage of university study and we're here to help. Reach out if you'd like any assistance in planning your study.

Call: 0800 627 739

Text: 5222

Email: [contact@massey.ac.nz](mailto:contact@massey.ac.nz)



NGĀ KARAPU ME NGĀ PĀPORI

## CLUBS AND SOCIETIES

**We have a wide-range of student-run clubs and groups across our three campuses or online. Have fun and make a difference to your student experience.**

Engaging with your student community can help add to an amazing university experience. You can meet new people, explore interests, make friends and even discover strengths to add to your CV. Connecting helps you have the best time possible while on your study journey and enhances your student experience.



**Scan to learn more**  
[tetiraahupae.ac.nz/find-a-club](https://tetiraahupae.ac.nz/find-a-club)



## DISABILITY SERVICES NGĀ RATONGA HAUĀ

We offer a wide range of support services and resources for students with disabilities, impairments and health issues. We work with you to identify the right supports in response to your individual needs, to help you succeed in your studies.

Contact us to discuss support options as soon as you are able to. Having conversations early gives us the chance to make sure support is in place when your studies start.

Email: [disability@massey.ac.nz](mailto:disability@massey.ac.nz)

## STUDENT LIFE

### MASSEY CAREER CENTRE TE POKAPŪ UMANGA O MASSEY

We can help you plan your career, find, and apply for jobs, and connect with employers at career events. You'll also get access to our career tools and resources online. While we'll never tell you what to do, or what to be, we'll tell you that it's never too early to start planning for your career.

We can help you explore your career options based on what you're studying, your interests, the skills you already have, your values, and the types of work that might suit your personality and strengths. We'll ask you what kind of difference you want to make in the world, and help you work out how you can make it happen through your choice of career.

We hold career events for our students throughout the year. These include career talks, workshops, drop-in sessions, online seminars, and employer presentations. You'll find Massey Career Centre online through the 'Careers' tab on MyHub, a digital platform for Massey students available when you enrol.

### YOUR STUDENT VOICE TE REO O TE TAUIRA

Your student association's aim is to make sure that you enjoy the best university experience possible. They represent all students and provide a range of services which are run by students and led by students association leadership/executive group. These include things like representation, advocacy, events, and clubs. They are here to give you a helping hand, and ensure your student voice is heard.



Scan to learn more  
[tetiraahupae.ac.nz](http://tetiraahupae.ac.nz)

### STUDENT DEVELOPMENT TE WHANAKETANGA O NGĀ ĀKONGA

Massey also offers a range of free development qualifications and opportunities designed to enhance student's citizenship, leadership, and employability skills. These qualifications offer a range of workshops resources, practical experiences and opportunities to develop open mindsets together with new skills and attributes.

## ORANGA TAUIRA STUDENT WELLBEING

**We understand the challenges tertiary study can bring and the importance of a holistic approach to keeping well through your study journey. Our student wellbeing teams can guide and support you through every stage of your learning journey.**

### HEALTH AND MEDICAL SERVICES

All three of our campuses have student Health + Counselling Services situated in central locations where you can make appointments with doctors, nurses or counsellors. You have the option to register as a casual patient or enrol, making the health centre your primary health care provider.

Services include general health consultations, injury management, information and advice. Doctors are available for appointments Monday to Friday, and we have skilled practice nurses on staff who can help you.

**Note:** The levy you pay for student services contributes funding which makes the visit to the doctor much cheaper than other general practice visits.



# We offer high-quality early childhood education on the Auckland and Manawātū campuses for children of Massey students

## CHILDCARE ON CAMPUS NGĀ WHARE KŌHUNGAHUNGA I NGĀ WHARE WĀNANGA O MASSEY

### Auckland

Your child will feel at home at Massey Childcare Centre Inc., a not-for-profit early childhood centre with a history of positive Education Review Office reports and great teacher-to-child ratios. Our highly-qualified and experienced teachers nurture children from birth to six years old in a newly-built facility.

### Manawātū

Your child will thrive in this innovative community-oriented daycare centre, Massey Childcare Inc. Our highly-qualified full-time teachers nurture children from birth to six years old.

At Te Uru Karaka Kōhanga Reo we also offer a wonderful and unique experience for tamariki aged from six months to six years old in a full immersion reo Māori environment.

After school childcare and holiday qualifications are available on the Manawātū campus

### Distance students

If you need childcare while you attend a contact workshop during a semester break, contact Massey Child Care Centre Inc. in Manawātū or Auckland as early as you can.

### Wellington

We do not offer childcare on the Wellington campus but there are many excellent preschool and after school care options very near to us.

## FREE COUNSELLING AND MENTAL HEALTH SUPPORT

Confidential and professional counselling is available in all of our student Health + Counselling Services.

Our registered counsellors are professionals who can help you to work through your problems and get back into study and student life, and offer a safe place for you to share your thoughts, feelings and concerns.

All Massey students currently enrolled and living in New Zealand can make an appointment to talk with a counsellor. Students learning online in New Zealand can choose which campus Health + Counselling Service to attend, or get counselling remotely over video conference or by phone no matter where you are studying in New Zealand.



**Scan to learn more**  
[massey.ac.nz/student-life/  
services-and-support-for-students/  
counselling-services/](https://massey.ac.nz/student-life/services-and-support-for-students/counselling-services/)

**Note:** Students outside New Zealand cannot use the service because our counsellors can only work in the country they are professionally registered in.

International students in New Zealand, you do not need to pay when you attend a counselling appointment. We will contact your medical and travel insurance provider to cover your use of the counselling service.

## SPIRITUAL WELLBEING, FAITH GROUPS AND CHAPLAINCY SERVICE TAHA WAIRUA

Taking care of yourself in a holistic way can help you get the most out of your university life and study. Chaplains are here to support you through your time at Massey. They have an understanding of life as physical, emotional, intellectual and spiritual. They can provide a listening ear, help you to make sense of life, and guide and advise.

A range of student faith groups are available on each campus. These are run through student association cultural clubs, and include groups such as Chinese Christian, Muslim societies and prayer spaces, Catholic, Pacific, and Tertiary Students Christian Fellowship.



**Scan to learn more**  
[massey.ac.nz/sw](https://massey.ac.nz/sw)



**Scan to learn more**  
[massey.ac.nz/childcare](https://massey.ac.nz/childcare)



# E ngā ākonga Māori Māori students

## MĀORI STUDENT COURSE ADVISERS

Māori student course advisors can help with advice about which courses to choose and how to enrol.

Tēnā, tomokia mai ki te whare wānanga nei, kia tū kaha ai koe i roto i tō whai mātauranga hei matapahi ki te ao nui, ki te ao roa.



📷 [masseymaori](#)

f [MaoriMassey](#)

**Piki mai, kake mai, haere mai ki Te Kunenga ki Pūrehuroa. Kawea mai rā ngā tino tūmanako, ngā wawata anō hoki i roto i a koe kia tutuki ai tō hikoitanga ki te ara o te mātauranga. Mai i tōna kunengatanga ki tōna pūrehuroatanga rā anō. Nō reira, e ngā tai e whā o te motu, e ngā reo huhua o tēnā iwi, o tēnā hapū, o tēnā whānau, puta noa i te ao whānui tonu, tēnā koutou katoa.**

**MĀORI  
@MASSEY**

Māori@Massey represents a kaupapa that helps to connect and support ākonga Māori (students), staff and our wider community so that you have every opportunity to achieve success as ākonga Māori at our university. By connecting with Māori@Massey you will come into contact with a wider support network of staff who are committed to your success (understanding that success looks difference for everyone) during your time at Massey. There are also kaihapai (student mentors) in targeted courses to provide support from students who have successfully completed these courses.

We look forward to supporting your journey with us wherever in Aotearoa or the world you may be studying from. Our ākonga Māori go on to make rich and distinctive contributions after graduating with many returning to pursue Masters and PhD studies. Part of our focus is to ensure that you have access and opportunities as Māori here at Massey. With increasing numbers of te reo Māori first language speakers studying at Massey, we continue to build our capacity to ensure that we can cater to the needs and aspirations of our ākonga reo Māori tuatahi. Ko te reo te mauri o te mana Māori.

We offer a diverse and contemporary range of study pathways at Massey and regardless of which courses, qualifications or qualifications you may pursue, the Māori@Massey whānau are here to provide cultural, pastoral and academic support to help you along the way. Massey is dedicated to nurturing Māori academic achievement and promoting excellence in teaching and research that contributes to both Te Iwi Māori and Te Ao Māori. We have more than 100 Māori subject courses available, taught by top academics in their field at both undergraduate and postgraduate levels.

Courses are available to study from anywhere in Aotearoa and the world and internally as well. With increasing numbers of Ākonga Māori studying at Massey University, now is the time to join us, take up the challenge, and study with us as part of the Māori@Massey whānau.



**Scan to learn more**  
[massey.ac.nz/student-life/maori-at-massey/](https://massey.ac.nz/student-life/maori-at-massey/)





## MĀORI STUDENT SUPPORT

We have passionate teams of staff dedicated to helping ākonga Māori succeed. Each of our 5 colleges has its own Associate Dean Māori to champion Māori student success along with Māori Student Advisers (Kaitautoko Māori) to provide academic support. There are dedicated ākonga Māori study and whānau spaces on each campus and our three Māori Student Associations, associated with Te Tira Ahu Pae, organise events and whakawhānaungatanga for students.

### TE RAU TAUAWHI MĀORI STUDENT CENTRE

Founded on principles of whānaungatanga and manaakitanga, Te Rau Tauawhi provides on-campus support for all ākonga Māori.

Services include:

- Provision of culturally relevant learning environments
- Mentoring and advocacy support
- Whānaungatanga events and activities

### TE WHEKE A TOI

Te Wheke a Toi: The International Indigenous Centre for Critical Doctoral Studies offers cultural and whānau centred support to potential and current Māori and Indigenous doctoral students in order to successfully navigate doctoral journeys.



Scan to learn more  
[massey.ac.nz/maori](https://massey.ac.nz/maori)

### SCHOLARSHIPS AND SUPPORT

The Pūrehuroa Scholarship Awards provide entrance, under-graduate and post-graduate scholarship awards to Māori students. These awards include financial, academic and mentoring support across a range of fields of study.

Te Rau Puawai is a highly successful scholarship qualification providing financial, academic and pastoral support to ākonga Māori studying across areas of relevance to Māori mental health.

### BACHELOR'S DEGREES

- Arts (Māori Knowledge)
- Arts (Te Reo Māori)
- Arts with Honours (Māori Knowledge)
- Māori Visual Arts (Toioho ki Āpiti)
- Resource and Environmental Planning
- Te Aho Tātairangi: Bachelor of Teaching and Learning Kura Kaupapa Māori.

### GRADUATE DIPLOMAS POSTGRADUATE CERTIFICATES

- Arts (Māori Knowledge)
- Education (Māori Education)
- Health Science (Major Health)
- Te Aho Paerewa: Māori Medium Teaching and Learning
- Māori Visual Arts (Toioho ki Āpiti).

### MASTER'S DEGREES

- Arts (Māori Knowledge)
- Education (Māori Education)
- Health Science (Māori Health)
- Māori Visual Arts (Toioho ki Āpiti).

### NGĀ RAUEMI MARAE MARAЕ AND MĀORI SPACES

#### Te Rau Karamu Marae

A stunning art-filled learning and teaching spaces that sits at the heart of the Pukeahu campus. Provides a distinctive space that is guided by kaupapa, tikanga and kawa. The Marae brings rich and culturally distinctive opportunities for students, staff and the community to connect and learn in a tikanga Māori environment which also recognises our long-standing relationship with Te Ātiawa iwi.

#### Te Pūtahi-a-Toi, School of Māori Knowledge

On the Manawatū campus is Turitea, a whare rūnanga in which hui, conferences, akoranga, noho marae, pōwhiri and karakia are regularly held.

#### Toi-te-Ora Wharekai

Provides a space for ākonga to learn about and engage in manaakitanga.

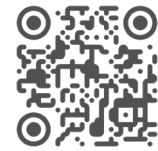
#### Te Whare Taupua

On the Otehā campus, Te Whare Taupua in the Atrium Building provides a welcoming space and support staff for ākonga Māori.



### PACIFIC STUDENT COURSE ADVISERS

Pacific student course advisers can help with advice about which courses to choose and how to enrol.



### FAMILY SUPPORT IS ENCOURAGED

The role of family is vital to student success and we encourage families to attend our Pacific events on campus such as Orientation, to help understand the student journey and how best they can support their success.

# Pacific students

**KIA ORANA, NI SA BULA, TALOFA NI, FAKAALOFA LAHI ATU, MĀLŌ E LELEI, HALO OLAKETA, KAM NA MAURI, IA ORANA, TALOFA LAVA**

Warm Pacific greetings to you all and welcome to Massey University. Our goal is to support academic excellence of Pacific students by creating a learning environment that acknowledges their cultural values and practices, making Pacific success a norm.



We are committed to providing services that support Pacific students, whether you have chosen to study on-campus or by distance learning. Our staff are empathetic to students' needs and understand the diverse backgrounds and shared values of Pacific students. Working alongside Pacific college-based advisors, Pacific Learning Advisers are able to give academic guidance to students, helping them reach their goals. Students can access services, including student-based learning workshops, mentoring support, subject tutoring and online developmental resources posted on our Pacific Stream site.

To provide a welcoming environment, we have dedicated Pacific spaces on each campus where students can study, connect with each other, and attend academic preparation workshops and cultural events. Prior to the start of each semester, Pacific orientations are held to familiarise new students with Massey University's support services and prepare them for the year ahead.

### PACIFIC STUDENT ASSOCIATIONS

You can join a Pacific student association on campus, or as a distance Pacific student. The associations are here to connect Pacific students and staff, organise events and celebrate.

- Massey Association of Pasifika Students at Albany (MAPSA)
- Massey University Pasifika Students Association (MUPSA) in Manawatū
- Massey Association of Pasifika Students (MAPS) in Wellington.



Scan to learn more  
[massey.ac.nz/psa](https://massey.ac.nz/psa)

### CELEBRATING SUCCESS

We understand the importance of celebrating success with family and in conjunction with graduation ceremonies, special celebrations are held annually on each campus, driven by Pacific students, to honour Pacific graduates where academic excellence and community awards are presented to students with outstanding achievement, leadership and service.

## OTHER DEDICATED SUPPORT STAFF

### Centre for Learner Success

You can contact a Pacific learning advisor on your campus about all study-related issues, questions and problems they you may have. They also have a range of learning development services and resources to help with your study.

### Distance Learning Advisor

We have a dedicated Pacific distance advisor for our students studying via distance who is here to support and advocate for you and will answer your questions or work to find someone who can.



Scan to learn more  
[massey.ac.nz/cls](https://massey.ac.nz/cls)

## PACIFIC AND MĀORI LIBRARIAN

The Massey University libraries are your best resources for study. The Pacific Librarian can help with your research, from looking for journal articles to finding a quiet space where you can study. The librarian can also provide information about the workshops and support provided to Pacific students within Massey's libraries.



Scan to learn more  
[massey.ac.nz/pacific-study-support](https://massey.ac.nz/pacific-study-support)



## SCHOLARSHIPS

A variety of Massey scholarships are available to Pacific students across most fields of study. The Office of Pacific Student Success also offers scholarships for those studying at pre-degree, undergraduate, postgraduate and doctoral levels.



📷 [pacific\\_massey](#)

f [pacificmassey](#)



## PACIFIC MASSEY TUTORING SERVICES

If you are new to Massey or tertiary study you will find the Pacific Massey Tutoring Services very useful. These are dedicated tutoring programmes focused on academic skills and course specific guidance for undergraduate students. They are available to all first-year Pacific students in selected papers and connects you with a tutor who can support you to succeed. It helps Pacific students build confidence in engaging with and understanding course materials and improving assignment grades and overall course performance. Under the tutoring services, tutors also provide advice on study preparation; thus helping students understand lecturers' expectations with assignment; reviewing past exam questions – helping students understand what exam questions are most often asked, what they are asking and what the lecturer expects in an answer. The tutors have course based content knowledge and close working relationships with the course coordinators and lecturers.



Scan to learn more  
[massey.ac.nz/pacific-study-support](https://massey.ac.nz/pacific-study-support)

# Ngā ākonga nō tāwāhi International students

## WE WELCOME INTERNATIONAL STUDENTS FROM OVER 100 COUNTRIES EACH YEAR ACROSS OUR THREE CAMPUSES.

We offer pre-degree (English and Foundation Studies) through to degree, masters and PhD study. Explore our qualifications and find out about visas, insurance, fees, scholarships, living in New Zealand and more.

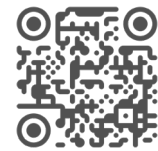
- Learn about coming to New Zealand, life while you're studying here and your options after you finish.
- Develop critical thinking, communication and teamwork in top-class qualifications. Get practical skills and a global outlook at Massey.
- We follow government guidelines so students have a good experience. The Education (Pastoral Care of Tertiary and International Learners) Code of Practice 2021 supports the wellbeing of tertiary and international learners enrolled with New Zealand education providers.
- What you need to meet English language and entry requirements to study at Massey as an international student.
- Learn about applying for and renewing your student visa and when you need to make changes to it.
- Look at scholarships for international students. US and Canadian students may also get financial aid.
- Understand Studentsafe and the medical and travel insurance you need to study in New Zealand.
- Discover Massey Global and how you can start your pathway to Massey outside New Zealand and finish with us. Or study in your country with one of our partners.
- Find an education agent in your area to help with your application to Massey and the student visa process in New Zealand.



**Scan to learn more**  
[massey.ac.nz/study/international-students/](https://massey.ac.nz/study/international-students/)

### INTERNATIONAL PROSPECTUS

Download the international students prospectus to discover what you can study as an international student





# Te Wānanga Hākinakina o Massey Massey Academy of Sport

## MASSEY HAS BEEN RECOGNISED AS AOTEAROA NEW ZEALAND'S FIRST ATHLETE-FRIENDLY UNIVERSITY.

Our Academy of Sport is a programme for emerging and high performance athletes, supporting you to achieve your best academically and in your sporting career.

**SPORT**  
MASSEY UNIVERSITY

### WHAT MASSEY OFFERS ATHLETES

No other New Zealand university gives the level of flexibility to elite athletes as Massey does. Flexible study options mean you can fit your study around your sporting commitments.

### STUDY AROUND MAJOR EVENTS

You can also change your study approach if you need to attend major events like World Champs, Commonwealth Games or the Olympic Games. As a high-performance athlete, you can apply for the Academy of Sport programme and associated scholarships and support each year.

Our High Performance Coordinators will be your first point of contact to make the most of combining your sporting and academic careers.

We can help you plan how to complete your academic work alongside your sport commitments, and make adjustments so you can compete in major events. We understand the life of elite athletes.

### THE RIGHT SUPPORT FOR YOU

The Massey Academy of Sport programme is split into four levels to provide appropriate support for all student-athletes from regional representatives to professionals, with a wide range of scholarship and funding opportunities from Platinum for professional and franchise level athletes, to Gold, Silver and Bronze tiers for players at other levels of sport.

Each level includes varying amounts of available funding, access to support personnel, and other resources including online seminars and more to make sure you can perform at your best, both in sport and study.

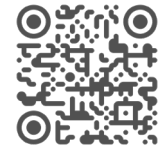
### GET IN TOUCH

For more information and to contact our High Performance Coordinators, please visit [massey.ac.nz/academyofsport](https://massey.ac.nz/academyofsport)

# Tenoho ki konei Accommodation

## VIRTUAL TOURS

Scan the QR code to take a look at all the options available



## CHOOSING WHERE YOU WILL LIVE IS ONE OF MANY IMPORTANT DECISIONS YOU MAY NEED TO MAKE.

**Our accommodation provides you with an opportunity to really enhance your university experience. You will meet a diverse range of people, make lifelong friends, enjoy an active social life with a range of organised activities available throughout the year and have support 24/7**

All Massey accommodation has Residential Assistants (RAs) who are senior Massey students living on site. Their role is to help provide a supportive residential community.

### AUCKLAND

Te Ōhanga Village, opened in 2015, offers a full range of on campus accommodation options from catered Halls of Residence to self-catered apartments and studio units. The accommodation is situated in the heart of the campus in close proximity to Westfield Mall Albany, QBE Stadium, Albany Village, parks, cafés, restaurants and bars. It's a 20-minute drive to the heart of Auckland city and is just minutes away from extensive recreation options and stunning beaches.

### MANAWATŪ

Our beautifully landscaped Manawatū campus has an extensive range of Qualmark accredited accommodation with catered and self-catered options available. The accommodation is located on campus to suit your budget and needs. Palmerston North is an easy city to get around whether you are walking, cycling or taking one of the free buses to and from the city, and is renowned for its cafés and range of sporting and recreational activities on its doorstep.

### WELLINGTON

The Wellington Halls are situated very close to campus and within walking distance to most places in the city. Wellington campus is close to the bustling business and shopping areas in the city, and there are extensive public transport options available.

### HOMESTAY

Homestay accommodation is a good option for students who would benefit from living in a family environment. Local homestay hosts are carefully selected and welcome students into their families and homes. If you are interested in this option please contact the homestay office for the campus you are going to be studying at.

### WHY CHOOSE MASSEY HALLS?

#### Location

Our halls are situated either on campus (Auckland and Manawatū), or within a short walking distance of the university (Wellington). Everything you need is nearby.

#### 24/7 support

We have a team of staff to support you 24/7 and our Residential Assistants all live on campus.

#### Better grades

Students that stay at Massey halls in their first year of study are more likely to have better outcomes: lower withdrawal rates, 5% higher course completion and progression rates.

**Source:** Student Management System, comparison numbers from 2018–2022 cohorts.

### Student community

You will be living with a community of students, giving you the opportunity to meet people and make life long friends from around the world.

### Activities and events:

We offer a full and varied residential life programme, so there is no excuse not to get involved.

### Safe and secure

Our buildings are safe and secure with key fob access. We have a security team that does regular checks through the day and night.

### No fuss payments

Our fees are straight forward. You pay one fee that includes your rent, water, power, internet and meals, if catered.

### Home away from home

We do our best to make you feel at home.

### Student leadership opportunities

Our residents have opportunities to take on leadership roles, such as floor wardens, and hall representatives. After a year, you could apply to join our team and become an RA.



### APPLY TODAY

Apply online for Massey student accommodation on the Auckland campus (in the suburb of Albany), Manawatū campus in Palmerston North, and Wellington.



## COSTS

All of the costs associated with the different options are available on our website. Costs differ depending on location and catering option. Our catered halls consist of lunch and dinner Monday – Friday and brunch and dinner at weekends.

## KEY DATES

- 1 **Applications open**  
1 August each year
- 2 **Application must be submitted by**  
30 September  
To be considered in the first round of allocations.

If you are a domestic school leaver we will need your common confidential reference form.

You may need to submit an application for accommodation before you have been accepted into your chosen qualification.

For more detailed information we publish an accommodation guide with further information. You can request this guide by calling 0800 627 739



## COST IS AN IMPORTANT FACTOR WHEN CONSIDERING TERTIARY STUDY

This section will give you an idea of the costs involved, options for funding your tertiary education and who to contact for more information.

Tuition fees can vary depending on the qualification you're undertaking, but you can always get an idea of costs from previous years. You'll also need to consider other costs such as accommodation and living expenses. There are several sources of funding to help you with your tertiary education and a range of scholarships and other options, such as student allowances and student loans.

### TUITION FEES

Fees for each qualification vary, however the tables on this page provide a general idea of the costs for first-year tuition for a domestic student.



Scan to estimate your fees  
[massey.ac.nz/domesticfees](https://massey.ac.nz/domesticfees)

### SOURCES OF FUNDING

There are several different ways to fund your studies such as:

- Holiday employment
- Scholarships
- Part-time or casual employment during the semester
- Student allowances
- Student loans
- Bursaries
- Grants from prospective employers
- Financial support from your family
- Savings
- Loans and overdrafts

### STUDENT ALLOWANCES

Some full-time students may be eligible for a student allowance to help meet their living expenses. If you are aged between 18 and 24, the amount of the student allowance you may receive depends on the combined income of your parents. There are also some special allowances for students who do not meet these criteria.

### STUDENT LOANS

Some domestic full-time students may qualify for a student loan to help pay for compulsory fees, books, materials and, in some cases, living costs. Some domestic part-time students may even qualify for a student loan to pay for compulsory fees.

### OTHER EXPENSES

Starting university can bring new financial challenges. Get advice on funding your study and other costs that maybe involved.



Scan to learn more  
[massey.ac.nz/budgeting](https://massey.ac.nz/budgeting)

# Budgeting

## Te taha pūtea



### STUDYLINK

Scan the QR code to find out more and apply online for student loans or student allowances



### Approximate cost of first-year tuition\*

120 credits	
Agriculture	\$7585.30
Arts, Business	\$6419.40
Design	\$7289.40
Engineering/Technology	\$7,927.60 – \$10,082.20
Science	\$7,289.40
Speech Language Therapy	\$7,585.20
Veterinary Science	\$13,580.00

\* Based on indicative 2023 figures for domestic students



# He whakamārama anō More information

## 0800 627 739

You can find out more about Massey's three campuses, distance learning, and the courses offered by calling our friendly contact centre staff or you can visit the Campus Information Service located on each of our three campuses.

### STUDENT ADVISERS

If you'd rather have a one-on-one chat, call the student adviser in your area. They're available to help you with any questions you might have about studying at Massey, whatever age or stage you're at. And if you'd like to have a sneak preview of university life, just ask your local adviser about taking a tour around any of our campuses. There are also dedicated advisers for Māori, Pacific and International students.

## EVENTS

Check out Massey life at one of our campus Taster Days. Learn about our qualifications and exciting career opportunities, our accommodation, facilities on-campus and talk to lecturers and students.

We also have stands at various career and tertiary education expos held throughout the country. If you want to know where you'll see us next, give your local student recruitment adviser a call.



**Scan to check out events**  
[massey.ac.nz/events](https://massey.ac.nz/events)

## QUALIFICATION GUIDES

Having read this prospectus, you may now want to explore your proposed area of study in greater detail. We produce a range of guides, grouped around our core schools of study.

These books provide details of entry requirements, majors, course structures and career outcomes for various qualifications.

### TO OBTAIN PRINT COPIES

Call: 0800 627 739

Visit: A Campus Information Service



**Scan to download**  
[massey.ac.nz/yourguideto](https://massey.ac.nz/yourguideto)

### MASSEY.AC.NZ

On our website you can find out more about what each campus has to offer, areas you can study at Massey, scholarships, events, accommodation, and enrol online. Our website is being constantly updated, so keep checking back for the latest information

# He kupu whakamārama Terminology

## BACHELOR'S DEGREE

Normally at least three years of full-time study.

## BLOCK MODE COURSES

Courses in which the class contact is in a compressed time period. Off-campus locations may be used.

## CORE COURSE

A compulsory course that must be passed as part of a particular qualification.

## COURSE

A module of work with a unique code number involving lectures, tutorials, seminars, and practicals. A typical undergraduate degree, studied full-time, would consist of 8 courses per year, with 4 in each semester.

## COURSE CODE

Each course has a six-figure code to identify it. For example, in course 150.214 the '150' denotes Māori Studies, the '2' shows it is a 200-level course and the final two digits '14' identify the course.

## CREDITS

Every qualification has a credit value and every course within a qualification also has a credit value. For example, a typical undergraduate degree is worth 360 credits and a typical undergraduate course is worth 15 credits.

## DISTANCE LEARNING

University study undertaken by correspondence and/or by electronic means. Also known as 'extramural'.

## ELECTIVE COURSES

Non-compulsory courses chosen by students (with certain guidelines usually provided).

## GRADUATE

A student who has completed a Bachelor's degree or higher.

## GRADUATE DIPLOMA

A qualification open to graduates or to those who can demonstrate equivalent experience.

## HONOURS DEGREE

Honours degrees are postgraduate qualifications where students engage in basic research. Students may complete an additional year of study above the basic Bachelor's degree in a subject, such as BA(Hons) and BSc(Hons), or they may enrol in an Honours qualification from the start, such as BDes(Hons) and BFA(Hons). An Honours degree is equivalent to a Postgraduate Diploma. Entry to an Honours qualification requires prior high academic performance.

## INTERNAL

University study undertaken by attendance at the regularly scheduled classes for a course.

## LEVEL OF COURSE

Typical undergraduate degrees consist of 100, 200 and 300-level courses. 100-level courses are taught in the first year, 200-level courses in second year and 300-level courses may be studied once 200-level courses are successfully completed. Postgraduate courses are taught at 700, 800 and 900-levels.

## MAJOR

A substantial component of an undergraduate degree (at least a quarter of all the courses in the degree).

## MASTER'S DEGREE

A postgraduate degree awarded for advanced study that normally builds on the principal discipline area(s) of a qualifying undergraduate degree.

## MINOR

A combination of courses in an undergraduate degree that is smaller than a major.

## MIXED DELIVERY MODE

A course of study which includes courses which are delivered by different modes.

## MODE

Refers to the teaching method of the course, which may be internal, distance, or block delivery.

## POSTGRADUATE DIPLOMA

A qualification that builds on attainment in the prior degree, open to graduates or those with equivalent experience.

## POSTGRADUATE STUDY

Involves study at either 700-, 800- or 900-level, or a combination of these levels, normally for an honours degree, master's degree or doctoral degree, a postgraduate certificate or a postgraduate diploma. Normally undertaken when a Bachelor's degree has been completed.

## PREREQUISITE

A course that must be completed before a student's enrolment in another course is confirmed.

## RESTRICTION

Some courses that are similar in content are restricted against each other. Students will not be permitted to enrol in both courses nor credit them both to a qualification.

## SEMESTER

A prescribed period of the academic year during which a course is taught and completed. A single semester normally comprises 13 weeks of teaching followed by final assessment where appropriate.

## SPECIALISATION

The collective term covering majors, minors, subjects and endorsements in a specific discipline for a qualification.

## STREAM

The Learning Management System adopted by Massey University. Stream is Massey University's virtual learning environment. Many courses are supported or enhanced by this environment, which includes features such as discussion boards, online quizzes, digital learning resources, and more.

## SUMMER SCHOOL

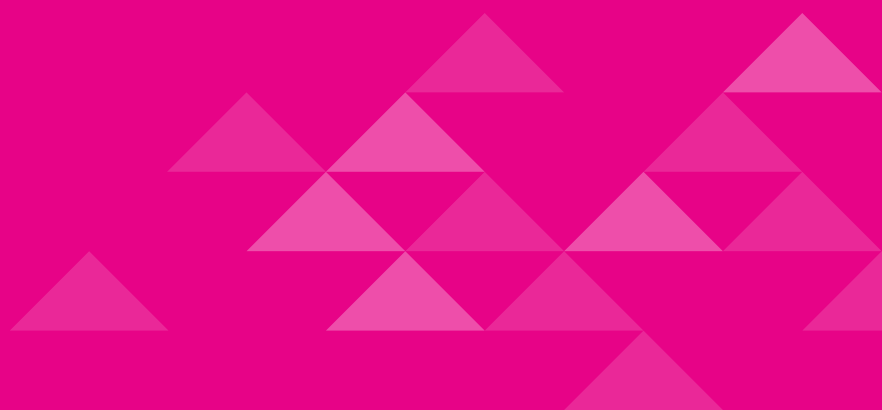
A period of study during the summer. It is shorter in length than a normal semester. Some Summer School courses are delivered over the full mid-November to mid-February period, and other courses are delivered over a shorter time span.

## TUTORIAL

Usually a period of instruction for a small group of up to about 20 students during which the academic content of a course is discussed with a tutor.

## UNDERGRADUATE

Before graduation, e.g. an undergraduate student is someone who has yet to complete the requirements of a Bachelor's degree.



### CONTACT US

If you'd rather speak to a real person, feel free to give our friendly contact centre staff a call on 0800 627 739.

If you'd like to actually see a real person, drop in to our campuses in Auckland, Palmerston North, or Wellington.

Email [contact@massey.ac.nz](mailto:contact@massey.ac.nz)

### STUDENT ADVISERS

We understand it's a big decision. We have heaps of people available to answer any questions you may have about studying with us.

Dedicated international, Māori and Pacific student advisers are also available.

### EVENTS

We host a variety of exciting events. Please visit [massey.ac.nz/events](https://massey.ac.nz/events) for details. We also have stands at various career and tertiary education expos held all over New Zealand (and beyond). Feel free to contact us if you want to find out when and where.

### INTERNATIONAL STUDENTS

The International Recruitment team is the first point of contact for prospective students. If you are considering studying at Massey we welcome your enquiry, and look forward to helping you join us.

Phone +64 6 350 5701

Email [international@massey.ac.nz](mailto:international@massey.ac.nz)

Web [massey.ac.nz/international](https://massey.ac.nz/international)

### SOCIAL MEDIA

 [MasseyUniversity](#)

 [MasseyUni](#)

 [MasseyUniversity](#)

 [MasseyUniversity](#)

 [新西兰梅西大学](#)