



TE KUNENGA | MASSEY
KI PŪREHUROA | UNIVERSITY
UNIVERSITY OF NEW ZEALAND

Health

Qualification guide

2024



CONTENTS

NGĀ IHIRANGI

Health

02 Study Health at Massey University

DEGREES

03 Bachelor of Nursing

06 Bachelor of Social Work

08 Bachelor of Health Science

15 Bachelor of Sport and Exercise

17 Bachelor of Speech and Language Therapy with Honours

19 Bachelor of Science (Exercise and Sport Science)

20 Bachelor of Science (Human Nutrition)

21 Bachelor of Arts (Social Policy)

OTHER QUALIFICATIONS

22 Graduate Diploma in Environmental Health

23 Graduate Diploma in Occupational Health and Safety

CONTACT US

26 Details on how to contact Massey

UPDATED SEPTEMBER 2023

Please note: The information contained in this publication is indicative of the offerings available in 2024 and subsequent years. This information may be subject to change. While all reasonable efforts will be made to ensure listed qualifications are offered and regulations are up to date, the University reserves the right to change the content or method of presentation, or to withdraw any qualification or part thereof, or impose limitations on enrolments. For up to date information, please see www.massey.ac.nz

Study Health at Massey University

START YOUR STUDIES IN THE EXCITING AND EVOLVING HEALTH FIELD

Health is the cornerstone of our lives, and the foundation for happy, thriving societies. With a growing population, the health and well-being sector has a high demand for skilled workers. Careers are diverse and range from nurses to social workers, nutritionists to mental health and addiction specialists and many others. The 21st century brings new challenges and needs both new solutions and new health professionals.

WORLD-CLASS EXPERTISE

Our College of Health Te Kura Hauora Tangata is a leader in Aotearoa New Zealand, built on world-class expertise and home to major research centres. We partner with New Zealand and international stakeholders to lead the improvement of health and well-being for all and promote equity and social justice. Our teaching, learning and research considers people's diverse needs, situations, communities, and the influence of environmental factors. We are internationally recognised and respected for the quality and integrity of our health-related research, the capability of our graduates and our service to others. Join us to help solve the health challenges and issues of the 21st Century.

SHAPE YOUR FUTURE

As a student within the College of Health you might be exploring how nutrition, exercise, work environment, housing, socio-economic status, ethnicity, and geography influence health outcomes. With a professional qualification in disciplines such as nursing, social work, health science, public health, mental health and addiction, environmental health, occupational health, nutrition, and sport and exercise you will contribute to encouraging healthy individuals, whānau, communities along with healthy businesses and economy. With our qualifications focussing on hauora and well-being, as well as the prevention, treatment and management of disability, illness or disease, we will prepare you for innovative health-related roles in your community. Our work-integrated learning approach will provide you with more than a degree, but the ability and experience to hit the ground running.



BECOME A SOUGHT AFTER GRADUATE

With Massey's teaching, research and applied learning, you will be highly regarded for your ability to build social capital and a healthy society. You will graduate with the ability to solve problems, and the confidence, knowledge and practical experience to hit the ground running as a systems thinker and transformational leader.

BUILD YOUR NETWORK

Massey's established networks within health-related industries, sport organisations, district health boards, Health Workforce New Zealand, the Ministry of Health, Oranga Tamariki Ministry for Children, and service providers continue to strengthen and grow. Increasingly, global connectivity is a major feature of our health qualifications, with attention to the Pacific region, the World Health Organisation, the World Bank and UNESCO.

INTERNATIONAL RANKINGS

- > Nursing – top 150 (2022 QS World University Rankings by Subject)
- > Nursing – top 150 (2022 Shanghai Global Rankings of Academic Subjects)
- > Public Health – top 400 (2022 Shanghai Global Rankings of Academic Subjects)
- > School of Sport, Exercise and Nutrition – top 200 (2021 Global Ranking of Sport Science Schools and Departments)

ACCREDITATIONS

- > Institution of Occupational Safety and Health (UK)
- > Medical Sciences Council of New Zealand
- > New Zealand Dietitians Board
- > Nursing Council of New Zealand
- > Register of Exercise Professionals
- > Social Workers Registration Board

KEY FACTS

- > Available at Manawatū and Wellington
- > Some courses are available via distance learning
- > Equivalent to three years of full-time study
- > The potential exists to study part-time in first year
- > Te Pou scholarships are available for Māori Nursing students
- > Available for international students studying in New Zealand. See www.massey.ac.nz/study-nursing
- > Applicants with an existing undergraduate degree in any discipline may be interested in the 2 year Master of Clinical Practice (Nursing) as an alternative study option. See www.massey.ac.nz/mcp

A GOOD FIT IF YOU...

- > Are passionate about making a difference to the everyday lives of people in our community
- > Want excitement and challenges in a job where every day is different
- > Want to be 'work ready' and have choices about where you want to work when you finish your degree.

WHAT IS IT LIKE?

When you study nursing at Massey, you will be part of a proud qualification renowned nationally and internationally for its first-class nursing curriculum and for educating nursing students to contribute to a wide range of healthcare workplaces. Our degree is so highly respected and recognised that both New Zealand and overseas employers hire most of our graduates within six months of finishing our three-year nursing qualification.

More compelling reasons to join us in nursing

- > Massey's nursing qualification is taught by the largest number of highly qualified nursing lecturers in the country, many recognised nationally and internationally for their research.
- > We offer our undergraduate nursing degree on two different campuses – Manawatū and Wellington.
- > Our proven qualifications are approved by the New Zealand Nursing Council.
- > More than 1100 hours of clinical placements over a 3-year period to ensure you are work-ready.

So, why not join the hundreds of Massey nursing students gaining real work experience in hospitals, community health centres, rural and outreach clinics and mental health services throughout the country every year? Why not learn valuable new skills to ensure your success when you go to work in the real world?



Bachelor of Nursing

BN

The Bachelor of Nursing qualification includes science and social science courses related to health, integrated into nursing knowledge. Clinical learning takes place in many different areas including surgical, emergency, medical, mental health and primary care services.

Nursing simulation suites

To prepare you for clinical practice, we have nursing simulation suites on our Auckland, Manawatū, and Wellington campuses. Each suite has a mock hospital setting, two-way observation spaces, and standard nursing equipment for hospital and community work. You will learn and practice nursing skills through role-play, case-studies and simulations using manikins.

Empathy Labs

One of the most important aspects of nursing is empathy, but it's not always easy to understand the impacts of long-term illness or ageing, when you're fit and healthy. You will participate in Empathy Labs by wearing special suits that simulate what it's like to attempt normal daily tasks after suffering a stroke, or being restricted by declining health.

Isn't it good to know that our high-quality degree provides the theoretical and practical knowledge required to work as a registered nurse? As our student, you will be well supported by clinical teachers who are themselves experienced registered nurses.

ENTRY REQUIREMENTS

Due to high demand, we recommend early application. Please refer to the selected entry qualification application dates web page: [massey.ac.nz/dates](https://www.massey.ac.nz/dates). Applications received after the due date may only be accepted if places are still available.

In addition to the normal university entrance requirements, the following criteria apply:

- A. Be selected into the qualification on the basis of a selection process which includes a written application, and may include an interview and practical exercises as determined by the Academic Board or their delegate.
- B. Candidates must meet the requirements set down by the Nursing Council of New Zealand for registration as a nurse in New Zealand in terms of good character and fitness to be a nurse. Hence, the School of Nursing will proceed with a criminal record check under the Criminal Records (Clean Slate) Act 2004 and the Vulnerable Children Act 2014 (VCA 2014). Once an applicant has been successful at gaining a place in the BN qualification, a NZ Police Vetting Service Request & Consent Form along with a VCA 2014 Questionnaire will be emailed to the successful applicant to complete and return. A similar procedure will be repeated by the Nursing Council of NZ upon application to sit the State Final Exam to become a registered nurse.
- C. Applicants who have English as a second language must provide with their application evidence of proficiency in the English language in the form of an Academic International English Language Testing System ("IELTS") with a score of at least 6.5 in reading, listening, writing and speaking respectively.
- D. A current Comprehensive First Aid Certificate is required upon admission (NZQA unit standards 6402, 6401 & 6400).
- E. Health screening requirement - Information regarding the health screening needed is sent out after an applicant has been successful at gaining a place in the qualification.
- F. Entrants must meet all healthcare professional vaccination requirements.

WHAT DO YOU NEED TO SUPPORT YOUR APPLICATION?

To support your application, you will need to provide the following documents:

- > A personal supporting statement of about 300 words explaining why you chose the nursing qualification and why you feel you would make a good nurse. List any personal characteristics you have that demonstrate your suitability.
- > A curriculum vitae of approximately three pages.
- > Two referee reports.

Nursing students wishing to transfer into the Bachelor of Nursing Qualification at Massey University are advised to contact the BN Programme Director by emailing: nursing@massey.ac.nz

PLANNING

The Bachelor of Nursing is a 16 course, 360 credit, three-year qualification involving theory and practice. The degree includes a minimum of 1100 hours of supervised clinical practice, which takes place in a wide variety of settings.

Graduates completing the full qualification will be eligible to sit the State Final Examination and apply to the Nursing Council of New Zealand for registration as a nurse. Enrolled nurses, midwives and graduates from other degrees wishing to achieve registration as a nurse may be admitted with advanced standing.





CAREERS

Nursing is one of the most rewarding careers, as it is focused on supporting people, families and communities to manage a wide range of health challenges. Nurses are involved in all areas of health care and can choose to specialise in particular areas, such as intensive care, community mental health, aged care, or child and adolescent nursing. They can also become a specialist in particular conditions, such as diabetes, respiratory care or cancer nursing. Nurses can also choose to develop careers in health management, research and teaching. Many of our Bachelor of Nursing graduates continue with their studies after qualifying as registered nurses by undertaking a master's degree in nursing.

In these challenging economic times, it's good to know that as a Massey nursing graduate you'll be highly valued and workplace-ready for a wide range of health-care settings. Here are just a few examples of where you can work:

Primary and community health care:

- > General practice
- > Māori health services
- > Hospice
- > District nursing
- > Community mental health

Hospital-based care:

- > Neonatal units
- > Medical and surgical wards
- > Emergency departments
- > Intensive care
- > Paediatrics

■ Acacia Thompson

Ngāti Wai

"Massey University has not only provided a foundation for my future in nursing, but it has also given me the opportunity to inspire and bring hope to my own whānau and friends. In the nursing course, you're not just sitting at a table learning theory, you're doing simulation labs; you're out on clinical placements every semester, and best of all, you're out in the community meeting and caring for new people every day. The lessons I have learnt from Massey School of Nursing have made me who I am today, as a Registered Nurse."



■ George Truebridge

The entrepreneurial spirit and passion to make sure students get the best out of their study, really attracted me to Massey. The lecturers and staff are so driven which had a massive flow on effect for me. What being a nurse means to me is giving people the opportunity to improve themselves to that they can improve their own people, family, and community around them.



For more information, visit www.massey.ac.nz/study-nursing

KEY FACTS

- > Available at Auckland, Manawatū and by distance.
- > Equivalent to four years of full-time study, or can be studied part time.
- > Available for international students studying in New Zealand
- > Te Pou scholarships are available for Māori Social Work students

A GOOD FIT IF YOU...

- > Dream of helping people from all walks of life
- > Want to make a real difference in the world
- > Believe in human rights and social justice

DEVELOP YOUR PASSION FOR HELPING OTHERS INTO A REWARDING CAREER

Become a registered social worker with Massey's Bachelor of Social Work. As a social worker, you can advocate for structural change, engage in community development and help people overcome challenges to enhance individual and whānau well-being.

The Bachelor of Social Work (BSW) is highly sought-after and internationally recognised. It will offer you a lifelong career that can take you across New Zealand and around the world.

- > More than 90% of Massey social work graduates find employment within six months of earning their degree.
- > Massey University is committed to being Te Tiriti o Waitangi-led and this is reflected in the School of Social Work and in your learning.
- > The degree is recognised by the Social Workers Registration Board New Zealand
- > Massey graduates make up the largest number of qualified social workers in the country.
- > Social work is a growth industry, with more than 10,000 registered social workers in NZ.
- > Massey is the leading university in New Zealand where you can study for your degree through distance learning.
- > You will get vital hands-on experience in the workplace in your third and fourth year of study where you will be supported to undertake placements.
- > We combine theory, practice, fieldwork and research, taught by well-qualified staff.

Bachelor of Social Work

BSW

Do you want to work towards a role that has a positive impact on individuals, families, groups and communities? Open to personal and professional development and keen to work with diverse communities?

CAREERS

A social work degree means you can work in many different areas. Social workers work across all age groups and you will have opportunities to work in many different areas, in non-government or statutory organisations, for example:

- > Aging
- > Child protection
- > Community work and community development
- > Disability
- > Diversity specific services (e.g. Chinese, Korean, Sāmoan, Rainbow, Spiritually-based)
- > Hospice
- > Hospitals and primary health care
- > Housing
- > Iwi and marae-based social services
- > Management and supervision
- > Mental health and addictions
- > Offenders
- > Policy development
- > Refugees and migrants
- > Residential care
- > Schools
- > Tertiary education
- > Women
- > Youth justice.





ENTRY REQUIREMENTS

Admission into the Bachelor of Social Work is by selected entry. As well as meeting the criteria to enter the University, the BSW Selected Entry application process requires that you:

- > Meet the requirements set down by the Social Workers Registration Act 2003 for registration as a social worker in New Zealand in terms of being "fit and proper persons to practise social work"
- > Provide a curriculum vitae which includes your academic and work history
- > Provide a personal statement explaining why you wish to enter the social work qualification and profession
- > Provide details of two character referees. These must not be family or friends
- > Provide details of any convictions or charges pending in New Zealand and/or overseas
- > Complete the Vetting Service Request and Consent Form for a New Zealand Police check
- > Provide a current Police Certificate from any overseas countries you have lived in for 12 months or more in the last 10 years.
- > Undertake an interview (if required)
- > Interested in Social Work and have relevant practical experience, or a Bachelor's degree in a related discipline? The 2-year Master of Applied Social Work may be an alternative option. Find out more at massey.ac.nz/masw

PLANNING

The Bachelor of Social Work degree takes four years of full-time study or up to eight years of part-time study to complete.

- > The qualification is made up of 480 credits with compulsory courses.
- > If you are applying to begin the Bachelor of Social Work in the second semester (mid-year) or wish to apply for credit, please contact an adviser from our Student Advice and Information Unit to discuss a study plan.
- > If you work in paid and/or unpaid employment for more than 12-15 hours a week, we recommend that you enrol on a part-time basis.
- > If you intend to study on a part-time basis, we recommend you contact an adviser from our Student Advice and Information Unit to discuss a study plan.

Note: Many social work placements prefer students to have a full NZ driver's licence – this takes place in your third-year placement.

For more information, visit massey.ac.nz/social-work

■ KAYSHA WHAKARAU

Ngāti Raukawa raua ko Ngāti Ruanui

"The day of a social worker is never the same, encountering different situations and people impacted by social and personal issues. If you are a problem solver, reliable, good at communicating, relatable, understanding, empathetic or willing to learn these attributes you have the potential to make a promising social worker. Social work is challenging and every day I am learning and adding to my kete. My aim is to continue to inspire and encourage all whānau to thrive and succeed to better not just their own well-being but those around them as well.



KEY FACTS

- > Available via Distance Learning
- > Some courses contain on-campus contact workshops
- > Some courses are available on campus
- > Equivalent to three years of full-time study

A GOOD FIT IF YOU...

- > Want to improve the health and lives of the population
- > Want to explore a particular interest in factors affecting health
- > Are keen to work in the growing health industry

Excel in the growing health industry

Massey's Bachelor of Health Science will prepare you to address the big health challenges facing the nation and the world in the 21st century.

WHAT IS IT LIKE?

Massey's Bachelor of Health Science is a comprehensive qualification offering a wide range of health majors, including Environmental Health, Health Promotion, Health Services Navigation, Integrated Human Health, Mental Health and Addiction, Occupational Health and Safety, and Psychology. This multidisciplinary foundation will prepare you to make a creative and practical contribution to improving the health of individuals, communities and nations.

The health industry needs you

There is a growing need for people who understand personal, workplace and community health issues in today's interconnected and complex world. Massey's Bachelor of Health Science will give you the skills you need to succeed.

With an interdisciplinary approach, you'll gain a good understanding of the biological and social bases of 21st century health issues. You'll be able to apply your multidisciplinary skills to explore solutions, create interventions, critically evaluate current practices and policies, and develop new ideas for bettering health.

The Bachelor of Health Science focuses on communication and critical-thinking skills, and will give you an understanding of research methods and the principles and practices of epidemiology. It will help you build your career in any of New Zealand's major health sectors.

Bachelor of Health Science

BHlthSc

Improve the nation's health

You'll get an understanding of the many dimensions of personal and population health and healthcare in New Zealand. You'll learn to critically evaluate information about health and well-being, and community and population health. With a solid grounding in health science, you'll be perfectly placed to contribute to improving the nation's health from day one in the workplace.

Follow your interests

It's easy to build a degree around your special interests at Massey. Our Bachelor of Health Science offers a large and comprehensive suite of health majors. With up to four elective courses, you can fine-tune these to your interests.

CAREERS

Massey has a long history of health science education. Massey's Bachelor of Health Science is a pathway to specific recognised and accredited health professions and specialist postgraduate training.

With a Bachelor of Health Science, you'll be well prepared to hit the ground running in the health industry. This is a great qualification to find an exciting and rewarding career. Depending on your major, you could work in any of the following:

- > Biosecurity
- > Environmental health protection, consultancy and auditing
- > Health navigation and case management in rehabilitation and disability support
- > Health promotion and policy work, for iwi, government and NGOs
- > Health research
- > Injury prevention
- > Mental health and addiction work
- > Policy advice and analysis
- > Public health quality assurance
- > Secondary school teaching
- > Whānau ora navigation
- > Workplace health and safety

To find out more, visit massey.ac.nz/healthscience

KEY FACTS

- > Available via distance learning
- > Some courses contain compulsory on-campus contact workshops.
- > Some courses are available on-campus

A GOOD FIT IF YOU...

- > Would like to play a key role in community health protection
- > Like communicating with people from a diverse range of backgrounds
- > Feel comfortable with applied science and love a challenge

Protect community health

If you're interested in protecting people's health and well-being at a community level, the Bachelor of Health Science (Environmental Health) is a great career choice.

The Environmental Health major of Massey's Bachelor of Health Science (BHlthSc) is designed to give you the training needed for a professional career in human health protection. You'll learn how to protect people and communities from threats to health from our built and natural environments. While completing your degree, you can become a student member of the New Zealand Institute of Environmental Health (NZIEH) and make professional connections.

Environmental Health is the professional area concerned with all aspects of the environment that may affect human health. Such threats may be biological, physical or chemical. They may come from natural processes, human activity, or a combination of the two. You'll study topics such as:

- > Food safety
- > Infectious disease transmission
- > Drinking water quality
- > Urban air pollution
- > The hazards of excessive noise
- > Exposure to toxic and other hazardous substances
- > Workplace monitoring
- > Contaminated site assessment
- > Waste management
- > Climate change

Environmental Health does not mean the health of the wider environment – for that you would study Environmental Science.

Environmental Health

A major of the BHlthSc

However, there is a complex range of inter-relationships between the two areas. Climate change is a good example of an environmental impact that will have major direct and indirect impacts on human health.

In the future, many of the health issues that concern us at the moment will take second stage to Environmental Health problems. These will include the need to deal with the consequences of an upsurge in the frequency of severe weather events, the depletion of natural resources, wider spread of zoonotic diseases, and increasingly polluted air, soil and water. This interplay of factors is going to make the next century especially challenging.

CAREERS

With a Bachelor of Health Science majoring in Environmental Health, you'll be ready for a wide range of careers. Most jobs in Environmental Health involve working with people to promote a healthier environment in which to live. Two key occupations are: Health Protection Officers (HPOs) with district health boards and Environmental Health Officers (EHOs) with local councils.

■ MONIQUE GOODHEW

Te Rarawa; Ngati Porou; Nga Puhi
Bachelor of Health Science
(Environmental Health)
Environmental Health Officer at Dunedin
City Council

I always had a passion for Environmental Health - I just didn't know what I could do with it. The staff at Massey helped me find my way and set me on the right direction to achieve what I wanted. There is no doubt that without the support from my lecturers, I wouldn't be where I am today. The theory and field work experience I gained made the transition into this career a lot easier.



KEY FACTS

- > Available via Distance Learning

A GOOD FIT IF YOU...

- > Want to improve health outcomes for communities and populations
- > Are keen to pursue a career in health promotion or advocacy
- > Already work in an area relevant to health promotion

Study for a meaningful career

You'll be prepared to address the big health challenges facing the nation and the world in the 21st century.

The Bachelor of Health Science (Health Promotion) will give you the skills you need to enable people to improve their health. New Zealand has a range of public health challenges including:

- > High rates of poverty
- > Increasing housing insecurity and homelessness
- > Poor mental health
- > High rates of non-communicable diseases
- > Disparities in access to health care
- > Inequitable Māori and Pacific health outcomes

By studying health promotion you will learn that solutions to contemporary health challenges requires attention to a wide range of factors including structural inequalities, environmental factors, government policy and community settings.

This qualification moves beyond individual behaviour to examining a wide range of social and environmental interventions. It takes an integrated approach to the science of good health. It also highlights the importance of nutrition, exercise and sleep to achieving and maintaining good health throughout the life cycle.

Using a holistic approach to health, you'll be able to communicate accurate and informed advice to produce a positive impact on health. You'll have an opportunity to apply this knowledge in the areas of community development, health education and policy development. Your learning meets the necessary public health skills defined by the Public Health Association of New Zealand and the Health Promotion Forum of

Health Promotion

A major of the BHlthSc

New Zealand. You'll graduate with the knowledge to critically evaluate evidence of health promotion, prevention and intervention strategies. These include community development, participation, social change, social marketing and advocacy. You'll be able to apply your new knowledge to the design, implementation and evaluation of health promotion activities.

CAREERS

The Bachelor of Health Science (Health Promotion) can lead to many rewarding careers. You could find work in any of the following fields:

- > Health promotion
- > Community health workers, outreach and advisors
- > Policy advisors and analysts in government, district health boards, NGOs or PHOs
- > Qualification managers, coordinators and evaluators.

■ CLAUDIA BOWMAN

BHlthSc (Health Promotion)
Health Promoter at Best Care
Whakapai Hauora

"Studying a Bachelor of Health Science with a new born was deemed impossible, but my lectures made this possible by providing high quality academic support."



KEY FACTS

- > Available via Distance Learning

A GOOD FIT IF YOU...

- > Want a career in any one of several specialist health-related fields
- > Have a passion for improving health outcomes and addressing inequities
- > Are solution-focused, hands-on and enthusiastic
- > Want to understand how the human body functions

Do you want a role helping people to get better access to services and treatment? Do you want to help those living with long-term conditions, impairment and disability with their access to health, education and disability services? If so, then the Bachelor of Health Science (Health Services Navigation) is the degree for you.

This qualification gives you the opportunity to study current health care and disability systems. It looks at how individuals, families and professionals can be more involved in holistic person-centred care.

You'll learn about the roles of navigators, connectors and coordinators. You will also learn about the jobs of brokers, case managers, counsellors and key health and disability professionals.

This major adopts a systems approach to reduce barriers to support and care for those who use health and disability service systems. It will also equip you to critically consider important national and international policies. You'll learn theories and practice to help people achieve their health-related goals while navigating health and disability systems. Our graduates work to facilitate change both in individuals and their community or work environments.

CAREERS

The Bachelor of Health Science (Integrated Human Health) will equip you to work in many different fields where you'll be encouraging people to improve their health.

Integrated Human Health

A major of the BHlthSc

Employment opportunities include working on health and well-being initiatives in:

- > Local health authorities
- > Local and national governments
- > Schools and universities
- > Corporate companies
- > Charities and funding bodies
- > Research institutes
- > Health and fitness centres

■ MADDI RYAN

Bachelor of Health Science (Integrated Human Health) Technical Officer at Regional Public Health

"I chose to study Health Science at Massey University because they offered the major of 'Integrated Human Health' that encompassed a broad range of all the aspects that affect health. This was a perfect choice for my study because I hadn't yet decided what area of health interested me the most. The courses I studied ranged from the physiology of the human body, to microbiology and genetics, sport science, right to the social determinants of health, public health and the current issues in New Zealand's health system."



KEY FACTS

- > Available via Distance Learning
- > Some courses contain compulsory on-campus contact workshops.
- > Some courses are available on campus

A GOOD FIT IF YOU:

- > Personally value respect, aroha and hope
- > Want to work with others to develop social justice and inclusion
- > Care about promoting the mental health and well-being of individuals, whānau and communities

Support workers represent more than 30% of the mental health and addiction workforce. They have been a primary driver of its growth over the past five years. Leadership for this growing and evolving workforce is needed. As a leader in the mental health and addiction field, you'll promote and sustain the mental health and well-being of individuals, whānau and communities. You'll work to reduce inequities and to improve the social, cultural, environmental and political determinants of mental health and addiction.

You'll learn:

- > Key concepts in mental health and addiction, its determinants and advocacy
- > Te reo, tikanga and engagement with Māori
- > Social and community helping skills
- > Models and predictors of mental health, public health and addiction
- > Key concepts in public health.

You'll gain:

- > The skills to facilitate, lead and advise in order to solve complex challenges
- > An appreciation of the development, history, and context of mental health and addiction in Aotearoa New Zealand
- > Skills of meaningful engagement, authentic relationships, and shared decision-making to plan and evaluate interventions to improve population well-being.

Mental Health and Addiction

A major of the BHlthSc

Study to suit your lifestyle

With distance learning you can plan your study to suit your lifestyle. You can enrol in the Bachelor of Health Science (Mental Health and Addiction) full or part time. Completion of an accredited* Bachelor of Health Science (Mental Health and Addiction) requires students to be residing in Aotearoa New Zealand in the final year of study in which the compulsory Work Integrated Learning course (with an accredited practitioner) is undertaken. A non-accredited* Bachelor of Health Science (Mental Health and Addiction) is available for completion by international students studying outside New Zealand or those not wishing to complete the Work Integrated Learning course.

CAREERS

You will possess the knowledge and transferable skills to work within a range of mental health settings. Roles may include:

- > Advisors and advocates
- > Educators
- > Health promoters
- > Kaimahi
- > Whānau ora navigators
- > Case managers
- > Probation officers
- > Public health workers
- > Community development workers
- > Policy analysts
- > Programme coordinators
- > Community outreach workers.

DAPAANZ recognition

Drug and Alcohol Practitioners' Association Aotearoa–New Zealand (DAPAANZ) is the membership association representing the professional interests of practitioners working in addiction treatment. The Bachelor of Health Science (Mental Health and Addiction) provides the critical knowledge and engagement competencies required for DAPAANZ-accredited support workers working with Māori and non-Māori in the mental health and addiction sector. As a graduate of this programme you may be eligible to apply for DAPAANZ accreditation. This is conditional on final approval of this qualification by DAPAANZ.



KEY FACTS

- > Available via distance learning
- > Some courses contain compulsory on-campus contact workshops.



A GOOD FIT IF YOU...

- > Want to enter the health industry
- > Have an interest in creating healthy workplaces
- > Enjoy making a difference to people's lives

EXCEL IN THE GROWING HEALTH INDUSTRY

Massey's Bachelor of Health Science (Occupational Health and Safety) will give you essential skills for a career in the health industry.

CREATE HEALTHY WORKPLACES

With the BHLthSc (Occupational Health and Safety) you will learn how to create healthy workplaces by improving the relationships between people at work, the work they do and their working environment. You'll develop expertise in the identification and control of occupational health and safety hazards. This major is one of only a few university qualifications in the world to include courses in ergonomics/human factors and occupational hygiene.

Occupational Health and Safety

A major of the BHLthSc

GET THE SKILLS YOU NEED

Your training will include decision-making, problem-solving and management skills. These skills are highly desired by employers. You'll get a variety of hands-on experiences, including participation in worksite visits. On completion, you'll be able to facilitate, educate, and promote safety and health in the workplace. The Occupational Health and Safety major includes all aspects of work and health, including physical and psychosocial work environments.

LOTS OF OPTIONS

Choose from full or part-time study and a range of electives.

Accreditation

Massey's BHLthSc (Occupational and Safety) is accredited by the Institution of Occupational Safety and Health (IOSH). You can access IOSH student membership throughout your studies and, on successful completion, you will be eligible for their graduate membership. IOSH is the only organisation in the world that offers Chartered membership to health and safety practitioners, so this can help you achieve the highest professional standards and gain international recognition.

CAREERS

Our graduates are working as:

- > Design engineers
- > Environmental health, air pollution and noise control specialists
- > Ergonomists/human factors specialists
- > Health and safety managers
- > Human resource managers and advisers
- > Occupational hygienists, health nurses and safety consultants
- > Staff of Worksafe New Zealand and ACC

KEY FACTS

- > Available via distance learning
- > Some courses are available at Albany
- > Some course are available at Manawatū



A GOOD FIT IF YOU...

- > Enjoy communicating with a range of people and communities
- > Are interested in people, thoughts, feelings and behaviour
- > Want a career devoted to human welfare

Excel in the growing health industry

If you're interested in improving people's health and well-being, and want to make real changes in the community, the Bachelor of Health Science (Psychology) is a great career choice.

With a Massey Bachelor of Health Science (Psychology) you'll explore people's thoughts, feelings, and behaviour and how they are affected by social and cultural contexts.

Get the skills you need

The psychology major offers you the opportunity to analyse the contributions made by psychological research to health. You'll learn to adopt an evidence-based approach to problem-solving and decision-making that relates to the connection between mental and physical health.

You'll learn how the structure of the brain affects our behaviour. You'll also learn how factors such as culture, gender, poverty and mental illness affect our health, thinking and behaviour.

Psychology

A major of the BHlthSc

A wide choice of psychology courses

At Massey, you can choose from a wide range of courses that reflect the diversity of psychology. You'll learn about the natural, social and biological side as well as research methods and applications of psychology. Your psychology major combines:

- > Natural science, focusing on perception, cognition, learning and the biological bases of behaviour
- > Social science, dealing with emotions, individual differences, behaviour and relationships and the wider social context.

We're well-connected and relevant

Through our connections with a wide range of community and statutory organisations, Massey University produces unique and applied psychology research and training that is recognised nationally and internationally.

CAREERS

The psychology major in the Bachelor of Health Science will help you develop a career that focuses on psychological aspects of the health of individuals and their families, workplaces and communities.

You'll get knowledge and skills relevant to a broad selection of applied psychology areas including clinical, health, education, community, industrial and organisational psychology. These diverse options mean you can study what you're most passionate about, and carry that passion forward into your career.

The knowledge of human behaviour and interactions that you will gain from a Bachelor of Health Science (Psychology) will be useful in many careers including:

- > Counselling
- > Public health
- > Youth support
- > Policy
- > Rehabilitation psychology
- > Scientific research
- > Special education.



KEY FACTS

- > Available at Manawatū
- > Some majors available via Distance Learning
- > Three years of full-time study, or part-time study over a longer period
- > Available for international students studying in New Zealand

A GOOD FIT IF YOU...

- > Are passionate about sport and exercise
- > Are keen to build a healthier world with a sport-focused degree
- > Want to help people live happier, healthier, better lives

Join the sport and exercise industry, one of New Zealand's biggest sectors

WHAT IS IT LIKE?

Get a broad, interdisciplinary understanding of key sport and exercise concepts and knowledge in your first year, then dig deeper by choosing one of three specialist areas in years two and three. As part of your major, you will gain valuable real world experience in our sport and exercise practicum, this will allow you to apply your skills and knowledge and prepare you for entry in to the workforce.

World-class, highly experienced staff

You will learn from the best, with many of our staff involved in sport at the highest levels as competitors, coaches, administrators and managers. Our research active academic staff will teach you the most up to date information to help prepare you for the ever changing and expanding world of sport and exercise.

Strong student support

Small class sizes are personalised to your learning style. Your lecturers are approachable, helpful and committed to your success.

Great facilities

You will enjoy working in first-class facilities including our state-of-the-art human performance labs, Sport and Rugby Institute, athletic track and sports fields.

Bachelor of Sport and Exercise

BSpEx

MAJORS

Exercise Prescription

You'll cover a range of disciplines including fitness assessment, exercise prescription and sport science, laying the foundations for enhancing health and well-being in the general and compromised populations, as well as in athletic conditioning. The sport and exercise practicum gives you experience working with individuals with various conditions in a real-world setting. This will test your fitness knowledge, exercise technique and programming skills.

Physical Education

Physical education has long been recognised as an important part of an overall education. You'll gain the knowledge and skills to perform and teach aspects of physical education, exercise and sport in educational contexts.

As a graduate, you will be knowledgeable about aspects of physical education and the breadth and potential of human movement. You will be able to demonstrate the application of key pedagogical principles in movement education, especially as they relate to youth.

Sport Development

Sport development is multi-disciplinary and plays an important role in the initiation, support and promotion of sport and physical activity at the volunteer, club, regional and national organisational levels, from grassroots to the elite level. This major will prepare you for work in the varied and growing area of sport development by providing knowledge in topics such as sport organisational structure and function, event and facility management and sport coaching, along with sociological, performance and business issues linked to sport.

Optional courses

Within your major, you have room for five optional courses (electives). Electives can be taken from any other undergraduate degree qualification and many students take electives related to sport and exercise topics, such as sport business, psychology and sport science. Students specialising in Physical Education who plan to go on to secondary school teaching are required to choose electives for a second teaching subject.



CAREERS

The BSpEx will prepare you for a variety of careers in New Zealand's large sport and exercise industry. This might include the growing areas of community sport, fitness, professional sport, sport administration and wellness. Potential careers and fields include:

- > National and regional sporting organisations
- > Sport events and recreation programmes
- > Community sports and fitness centres
- > Sport, health and physical activity promotion
- > Medical centres, hospitals, clinics and aged care facilities
- > Sports trainer or coach of athletes and teams
- > Teaching (further study required, such as a Graduate Diploma of Teaching)

For more information, visit massey.ac.nz/sportexercise

■ ASHLEIGH TITO COLLINS, TARANAKI BACHELOR OF SPORT AND EXERCISE (PHYSICAL EDUCATION)

"The sport and exercise degree has given me a head start in my teaching career. The practical side is a really neat and effective way to get students engaging with and learning from one another. I am also a person who learns visually and practical lessons benefited me most. All in all I absolutely loved Massey University and am thankful I chose this campus straight out of school as it has helped me grow and develop into the person I am today."



■ JAIMEE HICKS-WILTON BACHELOR OF SPORT AND EXERCISE (EXERCISE PRESCRIPTION)

"I chose to study at Massey as the learning offered a balance of theory and practical learning. As most sport students I came across, including myself, thrive in a hands-on learning environment it sounded like a no brainer to study here. Massey University have given me the knowledge and experience to enter the sport and exercise field with the confidence that I am well prepared and able to complete my current job as a personal trainer."



■ AARON MCLELLAND NGATI POROU TE IWI, TE AOWERA TE HAPU SPORT DEVELOPMENT

"The decision to be educated at Massey provided the flexibility and individualised support that I sought, in order to achieve my personal and professional goals. I was able to tailor my course load at different stages to achieve balance in meeting the demands of leading an active lifestyle. Massey has prepared me for a life beyond school. My degree has qualified my passion for sport into a prosperous profession in coaching, teaching, leading and managing sport teams."



Bachelor of Speech and Language Therapy with Honours

BSpchLangTher(Hons)

KEY FACTS

- > Available at Auckland campus for internal students
- > Available via Distance Learning
- > 4 year(s) full-time. Also available part-time.
- > Available for international students studying in New Zealand

A GOOD FIT IF YOU...

- > Enjoy working with others
- > Have good problem-solving abilities
- > Want a rewarding professional career
- > Are interested in understanding communication, feeding, swallowing and their support needs
- > Want to challenge yourself

Make your passion for helping people a reality

A Massey Bachelor of Speech and Language Therapy with Honours will set you up for a rewarding career supporting people of all ages with, speech, language, communicating, feeding and swallowing.

WHAT IS IT LIKE?

As a speech-language therapist you'll facilitate independence in individuals, or work with communities, educational, health, labour, legal, social and other organisations. You'll assess and work with people who have a variety of speech, language, feeding and swallowing support needs, improving their ability to participate in school, work, or other daily activities. Whether you're working with children who have speech or language support needs, or adults with a traumatic brain injury or stroke, you'll be improving people's quality of life by facilitating their communication and eating skills.

Massey's Bachelor of Speech and Language Therapy with Honours combines academic coursework with supervised work-integrated learning experiences (placements). You'll work alongside practising speech-language therapists to support your clinical competency development in a wide range of settings such as schools, rehabilitation centres, child development services and community settings. Most of these settings will be based in your local community. At least one will be based on campus in Auckland.

The Bachelor of Speech and Language Therapy with Honours requires a commitment to academic and practical excellence that will make you the best speech-language therapist you can be. This will be reflected in your ability to help support individuals to communicate when you join the workforce.

CAREERS

With your Bachelor of Speech and Language Therapy with Honours, you'll be able to work as a speech-language therapist to work in partnership to support people of all ages who have speech, language, feeding and swallowing support needs. Graduates typically find work in areas such as:

- > Education
- > Health
- > Rehabilitation
- > Private practice

- **KAREN STURGE** Bachelor of Speech and Language Therapy
Speech language therapist – Whangarei Hospital
"I became interested in speech language therapy after seeing speech language therapists being interviewed on television. It seemed like a really interesting profession that would enable me to use my love of language in a therapeutic way. I chose to study at Massey after having a positive experience studying accounting courses by distance learning, and because of the Auckland campus' proximity to Northland. As a mature, married student, Massey made every effort to secure clinical placements for me in my home town. After graduation I received job offers from the Ministry of Education and Northland District Health Board, and accepted the latter. This is basically my dream job, working with adults who have speech, language or swallowing difficulties mainly as a result of brain injury. My job is very varied and I work in a huge multidisciplinary team with nurses, doctors, physiotherapists, occupational therapists and social workers to name a few."

ENTRY REQUIREMENTS

You must be selected into the Bachelor of Speech and Language Therapy Honours Programme in the Institute of Education and have gained entrance to Massey University. Selection, and the subsequent offer of a place in the programme, is determined by the information submitted in your online application and an interview process.

Please login to the on-line enrolment system to apply for selected entry: [massey.ac.nz/apply/](https://www.massey.ac.nz/apply/)

The first part of the selection process involves assessment by academic staff within the Institute of Education. If the selection committee feel you potentially meet the selection criteria, you will be invited to an interview, based on a review of your written application. This is the second part of the selection process. If the interview panel is satisfied that you are a suitable candidate you may be offered a place, depending on available places.

Admission to the Degree of Bachelor of Speech Language Therapy with Honours requires that the candidate must meet the University admission requirements as well as some additional, programme specific requirements. See <https://www.massey.ac.nz/speech> for more information.

Once you have accepted the offer of a place in the selected entry programme, the College of Humanities and Social Sciences will ensure you are enrolled for the first year of study as outlined in the letter of offer. Once you have been granted entrance and admission to the University your enrolment will be confirmed.

In order to progress from Part 1 to Part 2, or Part 2 to Part 3 students must have passed all courses in the preceding Part.

For progression to Part 4 of the Bachelor of Speech and Language Therapy and to graduate with Honours, students must have maintained at least a B+ grade average in the Part 3 courses, otherwise they will graduate without Honours at the successful conclusion of Part 4.

Study pattern for a BSpchLangTher(Hons) degree
All courses offer 15 credits each, except 271.720: Research Report which offers 30 credits in Year 4. Space considerations mean that interested potential students should visit [massey.ac.nz/speech](https://www.massey.ac.nz/speech) for a more detailed description of course content and class titles.

Year 1

172133	Introduction to Language Studies
172234	Phonetics
175102	Psychology as a Natural Science
230110	Tūrangawaewae: Identity & Belonging in Aotearoa NZ
254102	Introduction to Professional and Ethical Practice in Education and Health Contexts
271150	Holistic Approaches to Communication Disorders
214101	Human Bioscience: Normal Body Function
271154	Communication Development in Children

Year 2

175206	Memory and Cognition
271253	Early Years Language and Communication Support
271254	Speech Sound Disorders in Children
271255	Assessment Frameworks and Procedures for Speech and Language Therapy Practice
271256	Introduction to Speech-Language Therapy Practice
271257	Language and Communication Support in Educational Contexts
271258	Neurogenic Communication Disorders I
271259	Deaf and Hard of Hearing

Year 3

172233	Language Learning Processes
271392	Augmentative and Alternative Communication
271393	Neurogenic Communication Disorders II
271394	Motor Speech Disorders
271395	Fluency Disorders
271396	Field Work and Clinical Skills II
271397	Adult Dysphagia
271398	Research Methods for Speech and Language Therapy

Year 4

271720	Research Report (30 credits)
271786	Advances in SLT and Diverse Clinical Populations
271787	Advanced Paediatric Dysphagia and Feeding Disorders
271788	Advances in Aural Rehabilitation
271789	Advanced Voice Disorders, Assessment and Treatment
271796	Advanced Clinical Practicum
271798	Advanced Clinical Practicum II



KEY FACTS

- > Available at Auckland
- > Minor available at Manawatū
- > Equivalent to three years of full-time study
- > Available for international students studying in New Zealand

Exercise and Sport Science

A major of the Bachelor of Science

A GOOD FIT IF YOU...

- > Have a passion for sport, exercise and health
- > Are interested in a career in the health, exercise, or sport industry
- > Want to learn more about how exercise influences health and performance.

Get scientific and practical skills

The Exercise and Sport Science major is ideal for you if you want a broad base in science coupled with knowledge and skills related to exercise and sport performance.

With the Exercise and Sport Science major, you'll study the key sport and exercise subjects including:

- > Biomechanics
- > Exercise physiology
- > Motor learning and control
- > Sports nutrition
- > Sports psychology.

Complemented by a strong understanding of other biophysical sciences, you'll gain an in-depth knowledge of factors that influence health and sports performance.

Our research-active staff will help you apply the latest knowledge to various sporting situations. You'll gain an understanding of how to optimise athletic performance and health through technology, nutrition, psychology and exercise. Additionally, you'll learn how training and performance are affected by different environments and the power of the mind.

You will learn theoretical material in lectures and then you will be provided the opportunity to apply your new knowledge in your laboratory and practical classes. Your range of subjects will upskill your knowledge and understanding of sports performance, and how exercise can be used to achieve improvements in fitness and health. You'll develop critical thinking, problem-solving and communication skills

relevant to this energy-fuelled and constantly progressing field. You can combine exercise and sport science with other courses such as sport development, exercise prescription, or science programmes such as human nutrition, psychology and physiology.

CAREERS

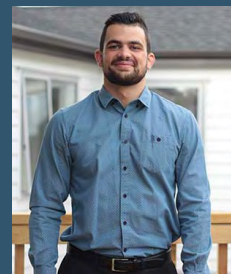
Massey's exercise and sports science graduates have an excellent reputation in the health, exercise and sporting industries, including:

- > Sport scientist working with individual athletes, sports teams, sports coaches and regional sporting bodies
- > Providing exercise and health guidelines to clients
- > Providing occupational health advice to companies and local bodies
- > Teaching at secondary and tertiary level

■ JOEL ARMSTRONG

BSc(Exercise and Sport Science)

I have always had a keen interest in sport and performance. I began to look for ways to understand and improve my own sporting performance. After familiarising myself with some basic sport science knowledge, I decided to enrol and further my learning. I have really enjoyed studying at Massey and the Sport Science staff have always been extremely supportive throughout my time here. Massey has also presented many opportunities for internships and work experience which have proved to be invaluable learning experiences for me. I chose Massey as I liked the idea of smaller class sizes and a more accessible university. This allowed me to develop relationships with my lecturers, post-graduate students and my classmates. I also worked with the men's Mitre 10 Cup team, U19's and travelled to Taupō with them for the national U19 tournament.



KEY FACTS

- > Available at Auckland
- > Equivalent to three years of full-time study
- > Available for international students studying in New Zealand

Human Nutrition

A major of the Bachelor of Science

A GOOD FIT IF YOU...

- > Enjoy working with people
- > Are fascinated by the relationships between food, nutrients, health and disease
- > Are curious about what makes your body tick

Turn your passion into your profession with nutrition at Massey

If you are passionate about food and nutrition and want to learn more about the science of how what you eat affects health, then Massey's Bachelor of Science (Human Nutrition) is for you.

Knowledge about human nutrition and the application of this knowledge are essential elements in maintaining a healthy society.

Human nutrition is a progressive, multi-disciplinary science requiring a wide range of knowledge. That could range from nutrient supply and metabolic processing to psychosocial and behavioural factors influencing diet. The Bachelor of Science (Human Nutrition) is designed to give you a clear understanding of basic nutritional principles. You'll also learn about the composition of food, human requirements for nutrients, and how the body processes food and nutrients.

The programme also highlights the physiological changes that occur as a result of excesses or deficiencies of various nutrients in the diet. It also looks at the changes in nutritional needs from conception through birth, growth, adulthood, and ageing. You'll gain an understanding of factors that influence food choice and awareness of practices to promote dietary change.

Help ensure people are healthy

With Massey's BSc (Human Nutrition) you'll gain an integrated understanding of nutrition, biochemistry and physiology all related to the human body.

This will give you the basis of knowledge required for enhancing health and fitness in individuals of all ages, and in groups and communities. The major will provide training in practical skills so you can work at promoting good nutritional practices to individuals,

communities and industry. You'll also gain an insight into how diet contributes to your own personal health and well-being.

First-class facilities and top lecturers

Massey has the only two Bod Pods in New Zealand and dual energy x-ray absorptiometry (DXA) equipment for measuring bone density and body composition.

Your lecturers are highly qualified and have a wide range of specialist research interests relevant to your study.

■ KATIE SCHRADERS BSc(Human Nutrition) PhD candidate

Massey's Palmerston North campus is beautiful – filled with wonderful facilities and some of the best teaching ever.

So, I chose a university with a good reputation in an affordable city. Little did I know that this would be the best decision I have ever made.

Part way through my first year I enrolled in a Physiology paper which I found fascinating. I hadn't really known what physiology was about when I was at school. So, I changed my majors to Physiology and Human Nutrition. It's one of the fantastic things about the Bachelor of Science programme at Massey – it's flexible and allows you to change direction easily. .

Studying these subjects has given me the opportunity to meet and be taught by some of the most inspiring and intelligent people I have ever (and possibly will ever) meet. The teaching staff are wonderful and caring. They are the sort of teachers who reply to your panicked emails at 4am, or while they're meant to be on holiday and invest time and energy into their students to help them find their own passions. This experience, along with the support and encouragement of the teaching staff, led me back to Massey to start my PhD.





KEY FACTS

- > Available at Auckland and Manawatū campus (not all courses are available on all campuses each year)
- > Available via Distance Learning
- > Available for international Students studying in New Zealand or via distance learning

A GOOD FIT IF YOU...

- > Want to know who and how decisions are made on important social policy issues that impact on all our lives such as housing, poverty, and healthcare
- > Want to find out about how to influence those decisions
- > Want to contribute to the cause of social justice and better outcomes for people
- > Are interested in debates about rights, freedom, equality and justice

WHAT IS IT LIKE?

If you are fascinated by how and why power, resources and opportunities are distributed within society, then Massey's BA (Social Policy) is for you. You will gain an understanding of the political, economic, social and cultural factors that influence the development, implementation and evaluation of social policy in Aotearoa New Zealand.

You will study law, politics – and the roles of central and local government in a democratic society. This will lead to insights into the relationship between the state, political parties, the judiciary, the legal system – and the public in shaping legislation and developing policy.

CAREERS

Your BA (Social Policy) will give you the knowledge and competencies you need to start your career as a policy analyst and researcher. You will learn a range of intellectual and practical skills that will stand you in good stead in the job market. This qualification opens up a world of opportunity to be involved in influencing a broad number of social issue outcomes (e.g. healthy housing, youth development, Māori well-being, health promotion, gender analysis of policy), not only from a Government-down position, but also from an individual, community and society-up perspective.

Social Policy

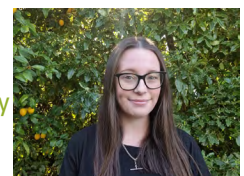
A major of the Bachelor of Arts

You will learn to apply your critical social policy analysis skills to a number of decision-making scenarios to result in better social outcomes. This decision-making can take many forms including a policy, project plan, submission, or even the strategic direction of an organisation. You could work in areas such as:

- > Research
- > Communications
- > Project management
- > Governance
- > Charitable trusts
- > Social marketing
- > Journalism (critical analysis of social issues)
- > Advocacy
- > Teaching and lecturing
- > Youth development
- > Community development
- > Politics
- > Government agencies – local, regional and central.
- > NGOs – trusts etc (housing, Māori land trusts, health service providers, disability advocacy and support, youth development)
- > Policy analysis – public, private and third sector (NGOs, PPPs, not-for-profit, voluntary and charity organisations)

■ ALYSSA COWIE Bachelor of Arts (Double Major in Educational Psychology and Social Policy)

I thoroughly enjoyed studying Social Policy because it covers such a wide range of topics. This meant I was able to complete assignments on areas of policy that genuinely interested me while also developing important transferable research and analysis skills.



Graduate Diploma in Environmental Health

GradDipEH

KEY FACTS

- > Available via distance learning
- > Not available for international students

A GOOD FIT IF YOU...

- > Would like to play a key role in community health protection
- > Are comfortable with applied science and love a technical challenge
- > Hold a relevant bachelor's degree or equivalent

Protect community health

If you're interested in protecting people's health and well-being at a local community level, the Graduate Diploma in Environmental Health is for you.

Massey's Graduate Diploma in Environmental Health is designed to give you the training needed for a professional career in human health protection. You will learn how to protect people and communities from threats to health from our built and natural environments. Environmental health roles often require your initiative to devise workable solutions to problems.

Environmental health is focused on all aspects of the environment that may affect human health. Threats to human health may be biological, physical or chemical. These may come from natural processes, human activity, or a combination of the two. You'll study important environmental health topics including:

- > Disaster health management
- > Food safety
- > Infectious disease transmission
- > Drinking water quality
- > Environmental and public health law
- > Urban air pollution
- > The hazards of excessive noise
- > Exposure to toxic and other hazardous substances
- > Recreational water quality monitoring
- > Contaminated site assessment
- > Waste management

CAREERS

- > This qualification prepares you for many roles, including entry into the two key environmental health occupations:
- > Environmental Health Officer (EHO)
- > Health Protection Officer (HPO).

Entry to the EHO role is possible because Massey's Graduate Diploma in Environmental Health is formally recognised under the Environmental Health Officers Qualifications Regulations 1993.

■ NEIL CORLETT

Graduate Diploma in Environmental Health

"I was after a more applied skill-sets to stimulate more opportunity to get out of the office. The environmental health arena is vast in its spectrum of applicability, in New Zealand as well as overseas in less developed nations. The programme was very applied – there



were plenty of examples and fieldwork to ensure students had hands-on experience with the methods and techniques for environmental sampling and analysis. This was balanced nicely with the theoretical concepts underpinning the science of environmental health. The mix of distance education and block courses was excellent for maintaining a work/study/life balance and for studying at my own pace, while also enabling social networking with potential future colleagues. The lecturers were very experienced and had a passion for both the subject and teaching. This meant they were accessible and approachable regarding learning support and advice for project work. There is a range of jobs available to people experienced in environmental health, in areas such as health and safety, public health, human resources and occupational/industrial hygiene."



Graduate Diploma in Occupational Health and Safety

GradDipOHS

KEY FACTS

- > Available via distance learning
- > Institute of Occupational Safety and Health accredited training provider
- > Not available for international students

CREATE HEALTHY WORKPLACES

With a Massey Graduate Diploma in Occupational Health and Safety (GradDipOHS), you can improve the working lives of New Zealanders while boosting your career. Transfer your learning to your workplace.

Occupational health and safety (OHS) has become an integral part of business in New Zealand. With a GradDipOHS you can help improve the effects of the working environment on the health and well-being of workers.

We spend a third of our lives at work, so workplaces contribute significantly to our health. Injuries and ill-health are two problems all workers potentially face. If you want a career that helps to reduce that burden on individuals and the nation, then this is the qualification for you.

This is a professional qualification designed to provide advanced education in the fields of safety management, occupational health, environmental control, loss control, and occupational hygiene. You will learn how to create healthy workplaces, including improving the inter-relationship of people at work, the work they do, and their working environment.

Choose from a range of courses

At Massey, you can choose from a wide range of courses that reflect the multidisciplinary nature of OHS. You'll learn about hazards and risks in the workplace, how to assess and manage those risks and create healthy workplaces. This graduate diploma is particularly useful if you currently work in these roles:

- > Health and safety coordinator
- > Occupational health nurse
- > Human resource management
- > Industrial relations specialist
- > Production manager
- > Industrial chemist
- > Industrial engineers
- > OHS consultant.

Accreditation

Massey's Graduate Diploma in OSH is accredited by the Institution of Occupational Safety and Health (IOSH). You will be able to access IOSH student membership for the duration of your studies and, on successful completion, you will be eligible for their graduate membership. IOSH is the only organisation in the world that offers Chartered membership to health and safety practitioners, so this can help you achieve the highest professional standards and gain international recognition.

Study when it suits you

Our distance learning option lets you study when and where is most convenient for you. You can fit study around your work and family commitments.

- **GREG DEARSLY** Managing Director, Health and Safety Consultant
First 4 Safety Ltd
"As someone new to health and safety, the programme provided in-depth detail of the approach the health and safety that was prevalent at the time and enabled me to introduce these concepts to an organisation that was looking to enhance its performance in this area.

The grounding and experience of working in a high-risk environment over a dozen years with the professional development afforded to me through the Massey programme enabled me to make a move into self-employment. Having a combination of work experience and an appropriate tertiary qualification has been of huge benefit in terms of career development and acceptance in workplaces."



ONE PLACEMENT AFTER ANOTHER



HEALTH
Success
from a thousand
little moments

Strength after strength. With our work-integrated learning approach, you'll graduate work-ready. Improve the well-being of your community and study nursing, nutrition, social work, sport and exercise, health science or public health. **Apply now at [massey.ac.nz/study-health](https://www.massey.ac.nz/study-health)**



**MASSEY
UNIVERSITY**
TE KUNENGA KI PŪREHUROA

OPEN DAYS 2022

MANAWATŪ: WED 2 AUGUST
AUCKLAND: FRI 11 AUGUST
WELLINGTON: FRI 25 AUGUST

massey.ac.nz/opendays



**MASSEY
UNIVERSITY**
TE KUNENGA KI PŪREHUROA

UNIVERSITY OF NEW ZEALAND

Contact Massey for more information

MASSEY.AC.NZ

Our website is full of useful information covering everything you need to know – from what each campus has to offer, their departments and qualifications, scholarships, events, accommodation and plenty more.

CALL OUR CONTACT CENTRE

If you'd rather speak to a real person, feel free to give our friendly contact centre staff a call on **0800 627 739**.

Or, if you'd like to actually see a real person, drop in to our campuses in Auckland, Palmerston North, or Wellington.

STUDENT ADVISERS

We have heaps of people available to answer any questions you may have about studying with us. We understand it's a big decision. To speak to someone, or to get someone to visit your school or workplace:

Phone: **0800 627 739**

Text: **5222**

Email: **academicadvice@massey.ac.nz**

Dedicated international, Māori and Pacific student advisers are also available.

QUALIFICATION GUIDES

We produce a range of supplementary guide publications with qualifications grouped around particular interest areas. They provide details of entry requirements, majors, course structures and potential career outcomes covering all our qualifications.

To obtain copies of these guides, see **massey.ac.nz/yourguideto**

Phone: **0800 627 739**

Text: **5222**

Email: **contact@massey.ac.nz**

EVENTS

OPEN DAYS

See **massey.ac.nz/opendays**

We also have stands at various career and tertiary education expos held all over New Zealand (and beyond). If you want to know where you'll see us next:

Call: **0800 627 739**

Text: **5222**

Email: **contact@massey.ac.nz**

Visit: **massey.ac.nz/events**

INTERNATIONAL STUDENTS

The International Recruitment team is the first point of contact for prospective students. If you are considering studying at Massey we welcome your enquiry, and look forward to helping you join us. For more information:

Phone: **+64 6 350 5701**

Email: **international@massey.ac.nz**

Web: **massey.ac.nz/international**

SOCIAL MEDIA



FACEBOOK

Facebook.com/masseyuniversity



TWITTER

@MasseyUni



INSTAGRAM

@MasseyUni



YOUTUBE

youtube.com/masseyuniversity



WECHAT

MasseyUniversityNZ

massey.ac.nz/health



TE KUNENGA | MASSEY
KI PŪREHUROA | UNIVERSITY
UNIVERSITY OF NEW ZEALAND