



MASSEY UNIVERSITY  
TE KUNENGA KI PŪREHUROA

# NGĀ TURE WHAKAWHIU TAUIRA

## KŌRERO O MUA

Ko ngā take whanonga mō ngā tauira ka tirohia ki roto ki te horopaki o te taiao whakaako me te taiao ako o te Whare Wānanga. Nā reira, ina puta t/ētahi whakahaere whakawhiu mā ēnei ture e ārahi kia tika, kia tōkeke, kia tiaki hoki i ngā motika a te tauira i ngā wā katoa.

## 1. KUPU WHAKATAKI

### 1.1 Te Taitara me te Tīmatanga

1.1.1 Ko ēnei ture Ngā Whakawhiu Tauira e whaimana nei i te rā o 3rd, o te marama o December, i te tau 2020.

### 1.2 Ngā Mātāpono

1.2.1 Ko tā Te Kunenga ki Pūrehuroa whāinga, kia ākina te pono o te tukanga whakaako me te ako; kia tau te manawa popore, te marutau me te manaaki i waenga i ngā tauira; i waenganui hoki i ngā tauira me te Whare wānanga e tautoko ai i ngā tauira katoa kia whakatinanahia ō rātou pitomata mā te mahi tahi e taketake mai nei i roto ki te pono me te tauawhiawhi.

1.2.2 Ko tā ngā ture whakawhiu tauira nei he whakarite kia tika, kia tere hoki te whakatau o ngā whakapae hara i roto i te horopaki o te taiao mātauranga. Nā reira, mehemea ka puta he whakapae hīanga [pūmātauranga nei, kore rānei] whakapae tino hīanga rānei [pūmātauranga nei, kore rānei] ka whakaritea te tukanga ki te wāhi i puta ai te whakapae i tētahi kaimahi, arā, te wāhi e mahi nei te Kaiwhakahē. Ko te mahi ka mahia me hāngai ki te ūranga ia, ā, me whakaaro hoki ki ngā otinga whakaora ina tika ana.

1.2.3 Me whai e ngā tauira Tā te Tauira Kirimana me te mau hoki ki te Kaupapa Here Aratohu, ā, me kua hoki e uru ki ngā mahi hīanga, ki ngā mahi tino hīanga rānei.

1.2.4 Tūturu mārika te titiro a te Whare wānanga ki ngā whakapae ka tukua mai, ā, e tino whai whakaaro ana hoki ki te taha o te Kaiwhakapae ki te taha hoki o te Kaiwhakahē. Nō konā, ki te puta mai he whakapae mā te kaimahi anō te tūraru e āta aromatawai kia tiaki i te taha ki a ia anō te Kaiwhakapae me te Kaiwhakahē. E kore rawa te Whare wānanga e rarata ki tētahi rautipu, i tētahi whakatuma rānei hei rautipu ki te Kaiwhakapae tae atu hoki ki tētahi mahi tūkino, takahi tangata rānei.

1.2.5 Kei te Whare wānanga te mana whakatau mō te huarahi ka whāia hei urupare atu ki tētahi whakapae hīanga a tētahi tauira, whakapae tino hīanga rānei, engari rā me hāngai pū, ahakoa te aha, ki ngā mātāpono o te manatika māori. Inā rā:

- (a) kia ū pono ki te tukanga tōkeke, ā, ka mārama te kite kia tutuki, i ngā wā katoa, tae atu hoki ki ēnei whakaritenga taketake e whai ake nei:
  - (i) me hoatu ki te Kaiwhakahē ngā taipitopito o te whakapae me te tukanga ka whāia;
  - (ii) me whai wāhi te Kaiwhakahē ki te urupare atu ki te whakapae;
  - (iii) me tōkeke te mahi a te/ngā Kaiwhakatau, me pono hoki, ā, me kua e whakaaro kino i ngā wā katoa;
  - (iv) me whakamōhio atu i te Kaiwhakahē kei a ia te mana hei tono kaitautoko, tae atu ki tētahi kaitautoko ā-ture;
  - (v) mēnā ka tuku tono pīra ki tā te whiti 10 me whakatau e tētahi tangata, ētahi tāngata rānei e kore ai e whai wāhi ki te whakatau tuatahi.

1.2.6 E wawata ana Te Kunenga ki Pūrehuroa kia tū hei Whare wānanga e aratakina ana e te Tiriti o Waitangi. Nā te pēnei, i ētahi wā he pai pea kia rapua e ngā tauira ngā huarahi tika hei whakatau whakapae. Waihoki, ina tika ana ki tā te whiti 4,2, ka āhei ki te whakamahi i te hā o te Tikanga hei whakatau i tētahi whakapae hīanga, whakapae tino hīanga rānei.

### 1.3 Te Whāinga

1.3.1 Ko te whāinga o ēnei ture kia whakaritea tētahi tukanga tōkeke, tukanga tika, tukanga ngāwari hei whakatau i ngā whakapae hīanga, i ngā whakapae tino hīanga rānei ki ngā tauira tūturu o te Whare wānanga, ērā kua whakatakotoria:

- (a) e ētahi atu tauira o te Whare wānanga;
- (e) e ngā kaimahi o te Whare wānanga rānei;
- (i) e ētahi tāngata i waho atu i te hāpori o te Whare wānanga kua pāngia e ngā mahi a ngā tauira;
- (o) tērā hoki, mō ia kēhi e pā ana ki tētahi whanonga i whakapaea ai:
  - (i) e mahi ai i roto i ngā whare o te Whare wānanga, i runga whenua, i roto rānei i ngā whare noho;
  - (ii) e hono ai rānei ki te kaupapa ako a te tauira;
  - (iii) e whaitake tōtika ai rānei ki te taumata o te tauira hei tauira o te Whare wānanga;
- (u) tērā hoki, mō ia kēhi, ka kīia nei:
  - (i) he whanonga i whakapaea ai ka taka ki raro i ēnei ture;
  - (ii) he whanonga i whakapaea ai rānei he mea pai hei tuku ki ngā whiringa whakawhiu kore.

1.3.2 Mehemea ka whakaarohia te whanonga/take o te whakapae he mea hei whakawhiu i raro i te whiti 1.3.1 (i) kātahi ka kīia nei te whanonga, te take rānei o te whakapae:

- (a) he hīanga;
- (e) he tino hīanga rānei
- (i) tērā hoki, mō ia kēhi ka meatia ki tā ēnei ture e kī ai.
- (o) mō te tikanga hei whakarōpū i te whanonga, te take rānei o te whakapae, ka wātea mai te Āpiha o te Whare Wānanga hei arataki.

- 1.4 Tono
- 1.4.1 Ka hāngai ēnei ture ki ngā tauira katoa e rēhita ana i Te Kunenga ki Pūrehuroa, ā, mā te rēhitanga hoki o te tauira kua whakaae ia ki te mana whakawhiu o roto mai i ēnei ture ki tā te Tauira Kirimana e kī ai.
- 1.4.2 Ka hāngai tonu ēnei ture ki ngā whakapae hīanga, whakapae tino hīanga rānei i te wā e rēhita ana te Kaiwhakahē hei tauira o te Whare wānanga, ahakoa kāhore pea te Kaiwhakahē e rēhita tonu ana.
- 1.4.3 Me pānui tahi ēnei ture me Tā te Tauira Kirimana; te Kaupapa Here Aratohu; Tā te Kaupapa Here Pūmātauranga Pono o te Tauira; te Tukanga Whakahaere Takahi Pūmātauranga Pono; te Ture Kawenga Rangahau; me ērā atu kaupapa here e hāngai ana, ngā ture, ngā tukanga.
- 1.4.4 Hāunga anō Tā te Tauira Kirimana, mēnā he takarepa i waenga i ēnei ture me ētahi atu kaupapa here, ture tukanga rānei ko ēnei ture te mea whaimana.
- 1.4.5 Kāore e whāia ēnei ture mō ngā takahanga iti.

## 2. Kuputaka

- 2.1 Kaitono pīra ko te Kaiwhakahē nāna te pīra i whakatakoto ki tā te whiti 10 e kī ai.
- 2.2 Whiti ko tētahi wāhanga kōrero o tētahi pukapuka ture.
- 2.3 Kaupapa Here Aratohu ko tā Te Kunenga ki Pūrehuroa Kaupapa Here Aratohu.
- 2.4 Kaiwhakapae ko te tangata nāna nei te whakapae ā-tuhi i whakatakoto e kīia ana he hīanga, he tino hīanga nā tētahi tauira, ā, kua tukua taua whakapae ki te Whare wānanga.
- 2.5 Whakapae ko tētahi whakapae ā-tuhi e kīia ana he hīanga, he tino hīanga nā tētahi tauira, kua tukua ki te Whare wānanga.
- 2.6 Takahanga iti ko te mahi e kīia nei:
- (a) ka takahi iti nei i te Kaupapa Here Aratohu; te Kaupapa Here Pūmātauranga Pono o te Tauira rānei; te Ture Kawenga Rangahau; me ērā atu kaupapa here a te Whare wānanga e hāngai ana, ngā ture, ngā tukanga rānei;
- (e) ka whakaarohia he whakakino ki te mahi whakahaere ngā whaitake rānei o te Whare wānanga ōna tauira rānei (kāpā kāore he kupu i tēnei kōwae kōrero hei aukati i ngā tāngata e whai atu ana i ā rātou mōtika ki te kōrero, ki te hui tahi i runga i te rangimārie);
- ā,
- (i) ka mahi i roto i ngā whare o te Whare wānanga, i runga rānei i ō te Whare wānanga whenua, i roto rānei i ngā whare noho;
- (o) ka hono rānei ki te kaupapa ako a te tauira;
- (u) ka whaitake tōtika rānei ki te taumata o te tauira hei tauira o te Whare wānanga;

tērā hoki, mō ia kēhi, ka kīia nei;

(h) mēnā he mea pūmātauranga te whakapae takahanga iti, ka whāia noatia hei wāhanga o te mahi whakaako o te tukanga ako, ā, ka meatia hei mea mātauranga e whakahaerehia nei e te kaimahi nōna te mana hei kawē i te mahi pūmātauranga;

(k) mēnā rānei he mea pūmātauranga kore te whakapae takahanga iti mā te Kairēhita Mahi Tuarua (tāna māngai rānei);

(m) mō ngā kēhi katoa pēnei ā-tukanga nei, ā-whakawhiu nei ka whāia ngā ritenga o te Kaupapa Here Aratohu; te Kaupapa Here Pūmātauranga Pono o te Tauira rānei; te Ture Kawenga Rangahau rānei; me ērā atu kaupapa here a te Whare wānanga e hāngai ana, ngā ture, ngā tukanga rānei.

## 2.7 Hīanga ko tētahi mahi:

(a) ka takahia te Kaupapa Here Aratohu; te Kaupapa Here Pūmātauranga Pono o te Tauira rānei; te Ture Kawenga Rangahau rānei; me ērā atu kaupapa here a te Whare wānanga e hāngai ana, ngā ture, ngā tukanga rānei;

(e) ka whakaarohia he whakakino ki te mahi whakahaere ngā whai takenga rānei o te Whare wānanga ōna tauira rānei (kāpā kāore he kupu i tēnei kōwae kōrero hei aukati i ngā tāngata e whai atu ana i ā rātou motika ki te kōrero, ki te hui tahi i runga i te rangimārie);

ā,

(i) ka mahi i roto i ngā whare o te Whare wānanga, i runga rānei i ō te Whare wānanga whenua, i roto rānei i ngā whare noho;

(o) ka hono rānei ki te kaupapa ako a te Kaiwhakahē;

(u) ka whaitake tōtika rānei ki te tuakiri o te Kaiwhakahē hei tauira o te Whare wānanga, inā hoki, ka puta he whakawhiu; ā, ka āhei tētahi kaimahi hāngai te whakatau ki tā ēnei ture e kī ai.

## 2.8 Ngā Ture ko ngā Ture Whakawhiu Tauira ina kore e kī nei mā ture kē atu.

## 2.9 Kaituku pīra hāngai ko tētahi o ngā tāngata e whai ake ana:

te Tumuaki o te Kāreti hāngai (te māngai rānei); the Amo Rangahau; te Kairēhita Tuarua - Mahi; te Tumu Māngai; me te Tumu Tauira/Raukura.

## 2.10 Kaimahi hāngai ko tētahi o ngā tāngata e whai ake nei kei te wāhi mahi e mahi nei, nōna hoki te mana ki te Kaiwhakahē:

he kaimahi e tū ana hei Tumu Whakaako me te Ako (kaimahi ōrite rānei); he kaimahi kua tohua hei whakawā ki tā te Ture Kawenga Rangahau e kī ai; te Kairēhita Tuarua-Mahi; te Tumu Ratonga Tauira (tāna māngai rānei); te Tumuaki o te Kāreti hāngai (tāna māngai rānei); me te Tumu Māngai.

## 2.11 Kaiwhakahē ko te tauira i whakapaea ai āna mahi.

## 2.12 Tino Hīanga ko tētahi mahi:

(a) ka takahia te Kaupapa Here Aratohu; te Kaupapa Here Pūmātauranga Pono o te Tauira rānei; te Ture Kawenga Rangahau rānei; me ērā atu kaupapa here a te Whare wānanga e hāngai ana, ngā ture, ngā tukanga rānei;

(e) ka whakaarohia he whakakino ki te mahi whakahaere ngā whai takenga rānei o te

Whare wānanga ōna tauira rānei (kāpā kāore he kupu i tēnei kōwae kōrero hei aukati i ngā tāngata e whai atu ana i ā rātou motika ki te kōrero, ki te hui tahi i runga i te rangimārie);

ā,

- (i) ka mahi i roto i ngā whare o te Whare wānanga, i runga rānei i ō te Whare wānanga whenua, i roto rānei i ngā whare noho;
  - (o) ka hono rānei ki te kaupapa ako a te Kaiwhakahē;
  - (u) ka whaitake tōtika rānei ki te tuakiri o te Kaiwhakahē hei tauira o te Whare wānanga, inā hoki, ka puta he whakawhiu;
- me te kī,
- (h) ki tō te kaimahi hāngai whakaaro, whai atu ana i te kōrero tahi me te Tumu Māngai mēnā he tino hīanga rawa atu kia tuku whakawhiu hemihemi, ā, kia tukua rānei ki ngā pirihihana;
  - (k) ka tukua ki te Tumu Māngai hei whakawā kātahi ka tuku ki te Tumuaki o te Kāreti hāngai (tāna māngai rānei); ki te Kairēhita Tuarua-Mahi rānei hei whakatau.

2.13 Tauira ko te tangata e rēhita ana i tētahi kaupapa ako i Te Kunenga ki Pūrehuroa, tētahi tangata rānei e akoako ana i te Whare wānanga i raro i te Ako Mai Tāwahi, te Whakaaetanga Whakawhiti Tauira rānei me tētahi atu Wāhi ako.

2.14 Tā te Tauira Kirimana ko te kirimana e here ai ngā tauira katoa e rēhita ana i Te Kunenga ki Pūrehuroa.

2.15 Whare wānanga ko Te Kunenga ki Pūrehuroa (ā, me ōna piringa katoa, hei tauira, Kāreti, Wāhi ako, Kura, tēnā wāhi me tēnā).

2.16 Tumu Māngai ko te tangata e mana ana i te Whare wānanga hei mahi ki tā ēnei ture e kī ai.

### 3. RIROHANGA WHAKAPAE (tirohia Āpitihanga 1)

3.1 Katoa ngā whakapae hīanga, whakapae tino hīanga ina puta he whiu me te whai i ngā ritenga o ēnei ture [tirohia Āpitihanga 2], ka tukua ki te kaimahi hāngai hei whakarōpū. Ko tā ēnei ture ko aua kaimahi hāngai ko ērā e mahi ana i te wāhi mahi o te Kaiwhakahē, te kawenga rānei ki te Kaiwhakahē: te Tumu Whakaako me te Ako (kaimahi ōrite rānei); ko ērā e whakawā ana ki tā te Ture Kawenga Rangahau; te Kairēhita Tuarua-Mahi; Tumu Ratonga Tauira (tāna māngai rānei); te Tumuaki o te Kāreti hāngai (tāna māngai rānei), me te Tumu Māngai.

3.2 Ko ngā tāngata i whakaahuatia i runga ake nei ka whaimana ki te kōrero tahi me te Tumu Māngai ka riro tōtika hoki ngā whakapae i a ia kātahi ka tukua ki te kaimahi hāngai.

3.3 Mēnā kāore te whanonga, te take rānei o te whakapae he mea whakawhiu, me tuku ki ngā ratonga e tika ana. [tirohia Āpitihanga 1]

3.4 Mēnā he mea whakawhiu te whanonga/take o te whakapae mā te Kaimahi Hāngai mā te Tumu Māngai rānei:

- (a) te whakapae e whakakore mēnā he take hakirara noa iho, he matangerengere, he take rānei i tua atu o ēnei ture;
- (e) e rapu kia whakatau i te whakapae mā ngā huarahi kōkau ki tā whiti 4.0 e kī ai;
- (i) e kōwhiri me pēhea e mahi ai hei whakapae hīanga, hei whakapae tino hīanga rānei nā

konei ka whāia te tikanga o ērā kupu kei te whiti 2 me ngā whakawhiu e mana nei i ēnei ture. [tirohia **Ā**pitihanga 2].

3.5 Ina riro mai he whakapae e kīia ana he mahi tino hīanga, mā te Tumuaki o te Kāreti hāngai (tāna māngai rānei), mā te Kairēhita Tuarua-Mahi rānei, mā te Tumu Ratonga Tauria (tāna māngai rānei) e tere whakatau ki tā whiti 7 e kī ai, ā, mēnā ka whakaae ki ngā kōrero o taua whiti ka whakamōhio atu i te Tumuaki Matua.

#### 4. WHAKATAU KŌKAU

4.1 Kei ngā kaimahi hāngai katoa, i raro i ēnei ture, te mana hei whakatau i tētahi whakapae me te kore whai i ngā tukanga ōkawa mēnā he whakapae hīanga, tino hīanga rānei, mēnā hoki ka āta whāia ngā mātāpono o te manatika māori.

4.2 Ka whai wāhi ngā tauria ki te tonono atu ki te Tumu Whakarae Māori (tāna māngai rānei) mēnā e hiahia ana kia tika ā-ahurea nei te tukanga hei whakatau. Kei te Tumu Whakarae Māori, tana māngai rānei te mana hei whakaae atu ki tēnei tukanga, ā, mēnā ka whakaaetia me whakaae te/ngā Kaiwhakapae me te/ngā Kaiwhakahē ki ngā ritenga i whakaritea e te Tumu Whakarae Māori e tāna māngai rānei.

4.3 Mēnā ka whakatau ā-kōkau nei i tētahi whakapae, tē taea te otinga te tonono pira.

4.4 Mēnā kāore tētahi whakapae i whakatau ā-kōkau nei ka whāia ki tā whiti 3.4(i) e kī ai, ā, e kore te Kaimahi Hāngai i whai pānga ki te whakataunga ā-kōkau e whai wāhi anō ki tētahi whakatau mō te whakapae.

#### 5. NGĀ WHAKAPAE

5.1 Ka whakamōhio atu i ngā Kaiwhakapae katoa kua riro mai ā rātou whakapae me te whakamōhio atu hoki atu e pēhea e whakaritea ai te whakapae.

5.2 Mēnā ka whakatauria ki tā whiti 3.4(i) e kī ai ko te whakapae he hīanga kāore i aukati i te whakaaro kia huri kē hei tino hīanga kia tukua kētia rānei ki ngā ratonga e tika ana.

5.3 Mēnā ka whakatauria ki tā whiti 3.4(i) e kī ai ko te whakapae he tino hīanga kāore i aukati i te whakaaro kia huri kē hei hīanga kia tukua kētia rānei ki ngā ratonga e tika ana.

#### 6. NGĀ RITENGA NOA MŌ TE TUKANGA

6.1 E kore tētahi whakapae hīanga, whakapae tino hīanga rānei e whakamana ina kore e whai i te tukanga tika ki tā ēnei ture e kī ai.

6.2 Ka noho harakore te Kaiwhakahē māna ka whāki mai nāna tonu te hīanga, te tino hīanga rānei tae noa atu rānei kia whakatau kētia ki tā ēnei ture e kī ai.

6.3 Ka whakatauria e te kaiwhakawā he hīanga, he tino hīanga i runga anō i te whakaaro tērā pea e tika ana te/ngā whakapae ki te Kaiwhakahē.

6.4 Katoa ngā tāngata e whai haepapa ana i raro i ēnei ture, nō rātou e mahi ana i ā rātou mahi, me āta whai ngākau atu ki ngā whakaponono ahurea me ngā uara o te hunga e whai pānga ana.

## 7. NGĀ TIKANGA MŌ TE WĀ/TOTOA

- 7.1 I te wā e tārewa tonu ana te whakatau o tētahi whakapae hīanga, whakapae tino hīanga rānei, i runga anō i te kupu nā te Tumuaki o te Kāreti hāngai (tāna māngai rānei), nā te Kairēhita Tuarua-Mahi rānei, te Tumu Ratonga Tauira (tāna māngai rānei), mā te Tumuaki Matua (ina whakaaro ana ia e tika ana kia pēnei) e tārewa te āhei o te Kaiwhakahē:
- (a) ki te tomo ki tētahi whare, ngā whenua, ngā whare noho rānei o te Whare wānanga tonu;
  - (e) ki te haere ki ētahi kaupapa e whakaritea ana e te Whare wānanga, mō te Whare wānanga rānei;
  - (i) ki te whakamahi i ngā rauemi o te Whare wānanga.
- 7.2 I mua i te whakamana o te tārewatanga i raro i te whiti 7.1 me whai wāhi te Kaiwhakahē (ina āhei ana) ki te whakaputa whakaaro mō te tārewatanga.
- 7.3 Mēnā ka whakamana i te tārewatanga i mua i te whai wāhi o te Kaiwhakahē ki te whakaputa whakaaro ka tuwhera tonu taua whai wāhitanga o te Kaiwhakahē puta noa i te tārewatanga.
- 7.4 I te wā e whakaaro ana kia tārewatia te Kaiwhakahē i raro i te whiti 7.1 me aro te Tumuaki Matua ki ngā āhuatanga e whai ake ana (ina hāngai ana):
- (a) te oranga, te haumaruru me te mana o ngā kaimahi o te Whare wānanga me ngā manuhiri;
  - (e) kia nahanaha te mahi whakaako me te rangahau i te Whare wānanga;
  - (i) kia tiakina ngā rawa me ngā rauemi a te Whare wānanga;
  - (o) ngā pānga o te tārewatanga ki te kaupapa ako a te Kaiwhakahē me ērā atu take ka kōrerotia e te Kaiwhakahē;
  - (u) ētahi atu take ka whakaaro e tika ana.
- ## 8. TE TUKANGA
- 8.1 Ahakoa te whakapae e kīia ana he whakapae hīanga ka āhei te whakawākia e tētahi kaimahi hāngai i raro i ēnei ture. Kia kore e puta te rangirua mō te whakapae hīanga ko te kaimahi hāngai ko te Tumu Whakaako me te Ako (kaimahi ōrite rānei); he kaimahi rānei e tohua ana hei whakawā i raro i te Ture Kawenga Rangahau; te Tumu Ratonga Tauira rānei (tāna māngai rānei), kia kōrero tahi rānei me te Tumu Māngai. Mutu ana te whakawākanga ka tukua ngā kitenga a te kaimahi hāngai ki te kaiwhakatau e tika ana. [tirohia **Ā**pitihanga 1]
- 8.2 Ahakoa te whakapae e kīia ana he whakapae tino hīanga me whakawā e te Tumu Māngai me ētahi atu kaimahi o te Whare wānanga e whakaetia ai. Mutu ana te whakawākanga ka tukua ngā kitenga a te Tumu Māngai ki te kaiwhakatau e tika ana. [tirohia **Ā**pitihanga 1]
- 8.3 Ko tā te tangata e whakawā ana me whai te tukanga whakawā kia tōkeke, kia kore e whakatoihara, e ngākau kino, e whai pānga rānei.
- 8.4 Ko tā te tangata e whakawā ana me mahi ēnei mahi tuatahi e whai ana:
- (a) he tere whakamōhio atu ki te Kaiwhakahē ina pai ana mō te whakapae, tae atu ki ēnei:

- (i) ko wai te Kaiwhakapae;
- (ii) ko te kōrero mō te whakapae hīanga, whakapae tino hīanga rānei tae atu hoki ki ngā mōhiohio pērā i te wāhi, te wā, me ngā tūāhuatanga o te whakapae hīanga, o te whakapae tino hīanga, me te/ngā ritenga o te kaupapa here hāngai, tikanga, ture, tukanga e whakapaea kua takahia; ā,
- (iii) te tukanga ka whāia hei whakawā i te whakapae, me ngā whiu ina whakamanahia te whakapae [tirohia **Āpiti**hanga 2]; ā,
- (iv) te mōtika a te Kaiwhakahē kia kaua e whakautu pātai i te wā ka haere te whakawākanga; ā,
- (v) te mōtika o te Kaiwhakahē kia whai kaitautoko, tae atu ki tētahi rōia, me ngā kaitautoko kōkau, kōkau kore rānei pērā i te Ratonga Tautoko Tauira, te Ratonga Tohutohu Tauira me te tautoko o te whānau; ā,
- (vi) haere ana te tukanga me whakamōhio atu ina puta mai he puka, he taunakitanga e hāngai ana ki te whakapae hīanga, whakapae tino hīanga rānei tae atu ki ngā kōrero a ngā kaititiro, ā, ngā tuhinga hāngai e kōrerotia ana, e hāngai ana rānei ki te whakapae hīanga, whakapae tino hīanga rānei; ā,
- (vii) te mōtika o te Kaiwhakahē hei urupare atu ki te whakapae i tētahi wā i whakaritea ai me ngā whiu ina kore e urupare atu i tētahi wā i whakaritea ai; ā,
- (viii) te mōtika o te Kaiwhakahē kia rongohia, kia whakaputa whakaaro rānei.

8.5 E whai ake nei ko ngā tukanga tuatahi kei te whiti 8.4;

- (a) mēnā ka whakaae mai te Kaiwhakahē ki te whakapae hīanga, whakapae tino hīanga rānei e kī ai, ka āhei te kaimahi hāngai e whakawā ana ki te whakatau ki tā whiti 4 e kī ai, ki tā whiti 9.1 rānei e kī ai; or
- (e) mēnā e kore e whakaae te Kaiwhakahē ki te whakapae hīanga, whakapae tino hīanga rānei e kore rānei e urupare mai i te wā e tika ana, ka āhei te kaimahi hāngai ki te whakawā tonu, ā, mutu ana te tukanga, me tētahi whakatau ahakoa mana ai, ahakoa kore mana ai rānei;
  - (i) me whakamōhio atu i te Kaiwhakahē tērā otinga; ā,
  - (ii) tukua ki te Kaiwhakahē te whai wāhi hei tono i tētahi anō urupare i mua i te whakarite rawatanga ki tā whiti 9.1. e kī ai.

## 9. TE WHAKARITE

9.1 Ka āhei te whakarite i te whakapae:

- (a) mā te tuku i te whakapae ki tētahi hui takawaenga. Mēnā kāore te Kaiwhakapae, te Kaiwhakahē rānei e whakaae ki tētahi hui takawaenga, ina kore rānei te hui takawaenga e whaihua ka tukua te kaupapa ki tētahi kaiwhakatau e tika ana māna hei whakarite, ā, mutu ana hoki te tuku whai wāhi anō ki te Kaiwhakahē hei whakaputa whakaaro, ka āhei ki te;
- (e) whakakore i te whakapae hei whakapae kore hāpono, hei mea iti noa iho, hei mea matangerengere rānei;
- (i) kia whakamana rānei i te whakapae, ā:
  - (i) me te kore tuku whiu;
  - (ii) me te tuku i tētahi whiu e tika ana ki tā ēnei ture e kī ai [tirohia **Āpiti**hanga 2];
- (o) kia whakaritea rānei te whakapae i runga i tētahi kōrero e whakaaetia ana e te Kaiwhakatau me te Kaiwhakahē, tēnā pea, ka tukua te whakapae ki ētahi atu ratonga.



- 9.2 Whai atu ana i te whakaaro ki ngā urupare whakamutunga a te Kaiwhakahē, e whakamanahia ana te whakapae hīanga, whakapae tini hīanga rānei, me hoatu he whakatau ā-tuhi:
- (a) e whakarāpopoto ana i te/ngā take i whakamanahia ai te whakapae; ā,
  - (e) ina ka utaina he whiu, me hoatu hoki te/ngā take he aha i utaina ai taua whiu; ā,
  - (i) me whakamōhio atu i te Kaiwhakahē tōna mōtika kia pīra mai i runga anō i ngā ritenga mō te pīra i raro i ēnei ture.

## 10. PĪRA

### 10.1 Mana hei Pīra

- 10.1.1 Ko te Kaiwhakahē i whakamanahia ai te whakapae mō te hīanga, tino hīanga rānei ki a ia e āhei ana ki te tono pīra ki taua whakatau ki tā whiti 10 e kī ai.

### 10.2 Te Wā hei Pīra

- 10.2.1 Ina tono pīra ana te Kaiwhakahē me whakamōhio mai i roto i te 28 rangi mai i te rā i whakatau ai. Kei te tangata pīra te mana ki te whakaae atu ki tētahi pīra i waho atu i tēnei wā.

### 10.3 Tono Pīra

- 10.3.1 Me tuku ā-waha, ā-tuhi rānei e te Kaiwhakahē te tono pīra ki te tangata pīra me te whakauru i te/ngā take mō te pīra ki tā whiti 10.4 e kī ai.

### 10.4 Take Pīra

- 10.4.1 Me tono pīra i runga anō i ēnei take e whai ake nei:
- (a) mēnā kāore i tōkeke te tukanga i whāia hei whakawā i te whakapae hīanga, whakapae tino hīanga rānei;
  - (e) mēnā kāore i whakamanahia te/ngā kitenga ki tā te taunakitanga i puta ai mō te whakapae hīanga, whakapae tino hīanga rānei;
  - (i) i tuwhene te whiu ki tō te/ngā whakapae i whakaritea;
  - (o) kua puta mai he taunakitanga hou e tino whaitake ana i muri mai o te otinga o te whakawā ka pānga mai ki te whakatau i whakatauria, ki te whiu rānei, ā, kāore hoki i tino puta i mua rā.

### 10.5 Otinga tē taea te Pīra

- 10.5.1 Ko ngā otinga e whakaaetia ana i waenga i te kaiwhakatau me te Kaiwhakahē e kore e taea te pīra.
- 10.5.2 Ko ngā otinga e whakaaetia ana i te hui takawaenga e whakaaetia ana rānei mā te whakarite kōkau kore e kore e taea te pīra.

### 10.6 Te Āhua o te Pīra

- 10.6.1 Ina tono pīra mai ana ko te Kaiwhakahē e kawē mai nei i te pīra ka kīia ko te “Kaitono pīra”.

### 10.7 Tukanga Pīra

- 10.7.1 Me tono pīra ki tētahi tangata i kore rawa i whai wāhi ki te whakatau tuatahi e pīratia ana.
- 10.7.2 Mō ngā whakapae hīanga me tuku te tono pīra:  
ki te Tumuaiki o te Kāreti hāngai (tāna māngai rānei) ina hāngai ana te hīanga ki te

kaupapa ako, ki ngā whakamātautau ki ētahi atu take pūmātauranga rānei;  
ki te Amo Rangahau ina hāngai ana te hīanga ki te rangahau tākutatanga;  
ki te Kairēhita-Mahi mō ngā kēhi hīanga atu anō.

10.7.3 Mō ngā whakapae tino hīanga me tuku te tono pīra:

- (a) ki te Tumu Māngai inā hāngai ana te tino hīanga ki te kaupapa ako, ki ngā whakamātautau ki ētahi atu take pūmātauranga rānei;
- (e) ki te Tumu Tauira me ngā Raukura mō ngā kēhi tino hīanga atu anō;
- (i) mā rātou te whakatau a te kaiwhakatau e whakaaroaro me ētahi atu tāpaetanga a te Kaituku Pīra e whai wāhi ai ia ki te whakaatu ā-kanohi nei āna tāpaetanga.

10.8 Whakarite Pīra

10.8.1 Ka āhei te kaiwhakarite pīra:

- (a) ki te whakaae ki te tono pīra me te whakakore i te whakatau;
- (e) ki te whakakore rānei i te tono pīra me te whakamana i te whakatau;
- (i) ki te whakarerekē rānei i te whakatau;
- (o) ki te panoni rānei i te whiu mā te whakanui atu i te whiu, mā te whakaiti iho rānei i te whiu tērā e kore e takahi i ērā e whakamana ana i ēnei ture. [tirohia Āpitianga 2]

10.8.2 Me tuku ā-tuhi nei e te kaiwhakarite pīra te whakatau ki te Kaiwhakahē.

10.8.3 Ko te whakatau a te kaiwhakarite pīra te whakatau whakamutunga mō te pīra.

## 11. TE WHAI WĀHI A NGĀ POKAPŪ O WAHO

11.1 Te tuku whakapae ki ngā Pokapū Whakaū Ture

11.1.1 Mēnā ka whakaaro te kaimahi hāngai ki tā ēnei ture ko te whakapae hīanga, whakapae tino hīanga rānei he whanonga e kīia nei he hara kirimina, e āhei ana te kaimahi hāngai ahakoa kei tēhea wāhanga o te tukanga, te tuku i taua whakapae ki te pokapū whakaū ture e tika ana.

11.1.2 Ki tā whiti 11.2 e kī ai, e kore taua tuku whakapae e aukati i te tukanga me te mahi whakawā i raro i ēnei ture.

11.2 Whakapae Kirimina

11.2.1 Mēnā ka tuku whakapae kirimina tētahi pokapū whakaū ture ki te Kaiwhakahē i mua i te whakaritenga i raro i ēnei ture:

- (a) me kua tētahi whakatau whakamutunga e whakaputa tae noa atu kia whakaaetia e te pokapū whakaū ture ki taua whakapae. Heoi anō, ngā mahi whakakapi/whitawhita ka āhei tonu ki te whakahaere ki tā whiti 7 e kī ai; ā,
- (e) ka whakaaetia tonutia tētahi taunaki hei tautoko i te hīanga, tino hīanga rānei.

11.3 Whakamōhio

11.3.1 Me whakamōhio e te Whare wānanga ngā pokapū o waho e whai wāhi ana ā-ture nei ki te tūranga tauira o te Kaiwhakahē, ina rerekē taua tūranga tauira nā ngā whiu i whakaū ai ki raro i ēnei ture.

11.3.2 Ina whakamōhio atu i tētahi pokapū o waho ki tā whiti 11.3.1 e kī ai, me whakamōhio hoki te Kaiwhakahē e te Whare wānanga kua mōhio te pokapū o waho.

## 12. TE WHAKAŪ WHIU

12.1 Ina whakaū whiu, ā, ina whakaae rānei te Kaiwhakahē ki tētahi whakatau pīra kore, ka āhei te Tumuaki Matua ki te whakatārewa i te mōtika o taua Kaiwhakahē ki te noho ki ngā whare o te Whare wānanga, ngā whenua, ngā mahi rānei e whakahaeretia ana e te Whare wānanga, hāunga anō, tae noa atu rānei kua tutuki ngā ritenga o taua whiu.

## 13. PŪRANGA KŌRERO

### 13.1 Tino Hīanga

13.1.1 Ko ngā taipitopito o ngā mahi hīanga, tino hīanga rānei kua pono te kī i raro i ēnei ture me pupuri motuhake atu i te pūranga kōrero o te tauira. Me pupuri aua raraunga mō te 6 tau, ā, pau ana te 6 tau me tango kātahi ka tineia. Heoi anō, ina aukatihia te tauira mō ake tonu atu me pupuri noa aua raraunga.

### 13.2 Pupuri Mōhiohio

13.2.1 Kia tonu pīratia e te Kaiwhakahē ki te/ngā otinga o te tino hīanga me pupuri e te kaiwhakarite hāngai ngā mōhiohio katoa e pā ana te pīra mō te ono tau mai te rā i whakaaetia te whakapae, pau ana te ono tau ka tangohia ka tineia.

## 14. TE TŪMATAITI ME TE MATATAPU

14.1 Ka noho matatapu i raro i ēnei ture te tukanga mō ngā whakapae katoa, ā, ka tiakina hoki te Kaiwhakahē me te Kaiwhakapae ki tā te Privacy Act 1993.

14.2 Karekau he kōrero i te whiti 14.1 hei aukati i te puakanga:

- (a) ki tētahi tangata hei whakaaro, hei whakawā rānei i tētahi whakapae, tētahi hui pīra i raro i ēnei ture;
- (e) ki tētahi pokapū o waho rānei i raro i te whiti 11.

## 15. RŌPŪTONO

15.1 Ko te mana kei te Tumu Ratonga Tauira i raro i te whiti 3.1 me te whiti 3.5 rānei, me te whiti 7.1 rānei me te whiti 8.1 ka āhei te tuku i taua mana ki tētahi atu tangata i tautapatia ai e rātou mō taua take.

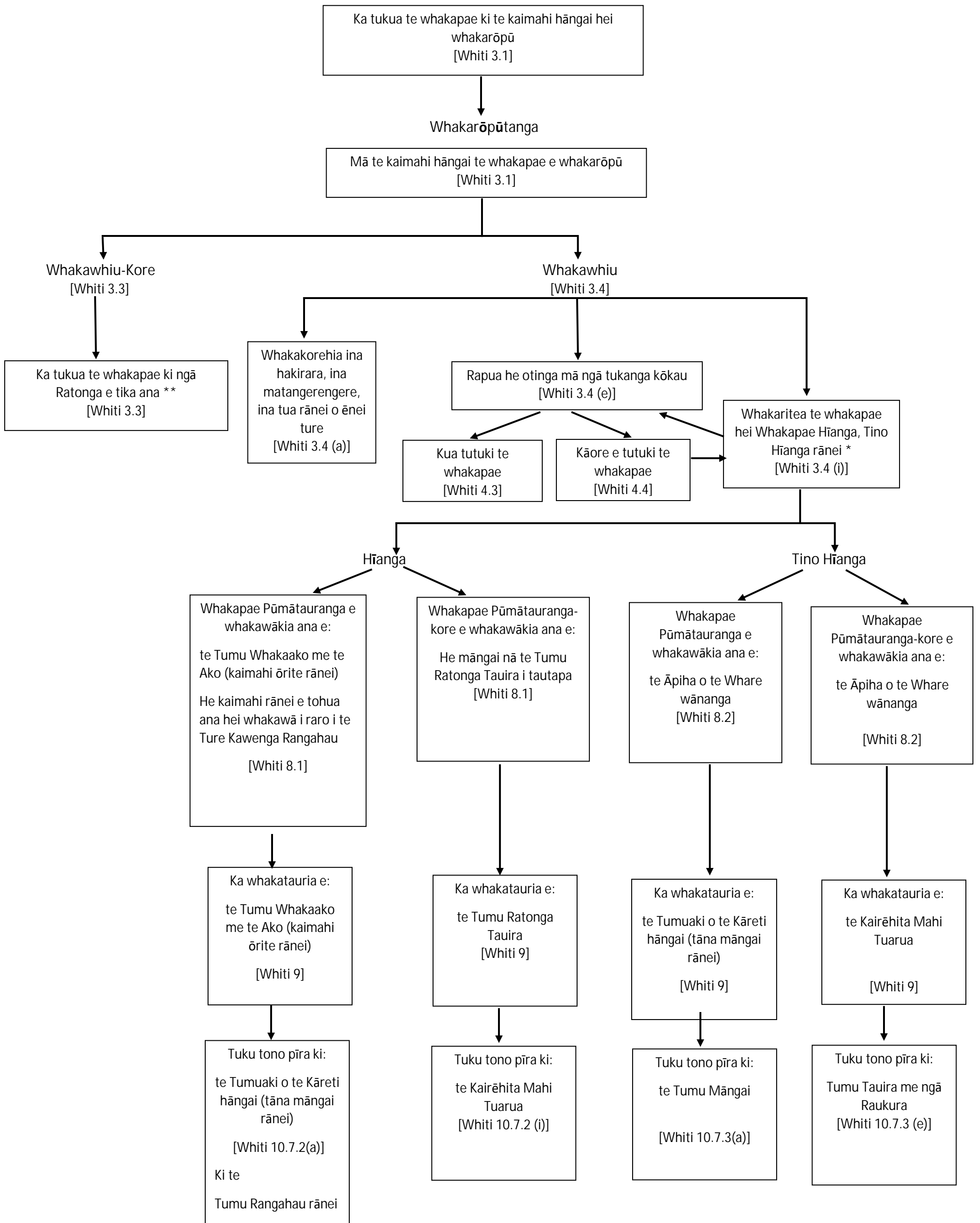
15.2 Ko te mana kei te Tumuaki o te Kāreti hāngai i raro i te whiti 3.1 me te whiti 3.5 rānei, me te whiti 7.1 rānei, me te whiti 9, me te whiti 10 7.2 (a) ka āhei te tuku i taua mana ki tētahi atu tangata i tautapatia ai e rātou mō taua take.

15.3 Ko te mana kei te Tumu Whakarae Māori i raro i te whiti 4.2 ka āhei te tuku i taua mana ki tētahi atu tangata i tautapatia ai e te Tumu Whakarae Māori mō taua take.

## 16. KUPU WHAKAWHITI

16.1 Ka whakakapia ēnei ture, whakakorehia hoki Ngā Ture Whakawhiu Tauira 2010 engari katoa e noho nei ko ngā tukanga, ngā mahi, ngā whakaritenga me ngā mōtika hei tonu pīra kua tīmata kē i raro i Ngā Ture Whakawhiu Tauira 2010 tae noa atu kia tineia i raro i aua ture.

Rirohanga Whakapae



\* Ko te whakatau i raro i te Whiti 3.4 (i) kia whakaarohia te whakapae hei hīanga e kore ai e aukati te whakaaro kia huri te whakapae hīanga hei whakapae tino hīanga kia tukua rānei ki ngā ratonga tika. [Whiti 5.2] Ko te whakatau i raro i te Whiti 3.4 (i) kia whakaarohia te whakapae hei whakapae tino hīanga e kore ai e aukati te whakaaro kia huri te whakapae tino hīanga hei whakapae hīanga kia tukua rānei ki ngā ratonga tika. [Clause 5.3]

\*\* Ko ngā Ratonga tika ko ēnei: TBC

## ĀPITIHANGA 2

### Rārangi whiu

<b>MOMO</b>	<b>WHIU</b>
<b>Hīanga</b> [Pūmātauranga, Kore rānei]	<b>Ngā whiu:</b>  (a) he whiu pūmātauranga e tika ana; me tēnei rānei...  (e) tētahi whiu ā-moni, he tono utu rānei iti iho i te \$500; me tēnei rānei...  (i) tētahi ōta hei tāiri i te tomo mai o te kaiwhakahē ki te whare wānanga mō tētahi wā noa.
<b>Tino Hīanga</b> [Pūmātauranga, Kore rānei]	<b>Ngā whiu:</b>  (a) he whiu pūmātauranga e tika ana; me tēnei rānei...  (e) tētahi whiu ā-moni, he tono utu rānei iti iho i te \$5000; me tēnei rānei...  (i) tētahi ōta hei rāhui i te tomo mai o te Kaiwhakahē ki te whare wānanga mō tētahi wā noa; me tēnei rānei...  (o) tētahi ōta e aukati ana te haramai o te Kaiwhakahē ki te Whare wānanga.