

Master of Business Studies (MBS)

The MBS is an advanced qualification for students who have completed the degree of Bachelor of Business Studies or Bachelor of Business Studies with Honours. Those candidates who successfully complete the MBS will, by the end of the programme, have achieved the combined study of advanced theory with research in a specialised field of business.

Endorsed in Human Resource Management

114.7xx (60 Credits) 114.790, 114.899 and 30 credits of approved electives.

Endorsed in Occupational Safety and Health

114.731, 114.773, 114.790, 114.899 plus one of 114.770, 114.772 or 114.775.

Doctor of Philosophy (PhD)

The degree of Doctor of Philosophy (PhD) is the highest degree available in the College. It is a prestigious research qualification which is essential for a career in any research institution or university.

Undergraduate programmes available internally at Auckland, Palmerston North, Wellington and Extramurally.

Postgraduate programmes available at Auckland, Palmerston North and Extramurally.

Limited postgraduate papers available at Wellington.

2008 Programme

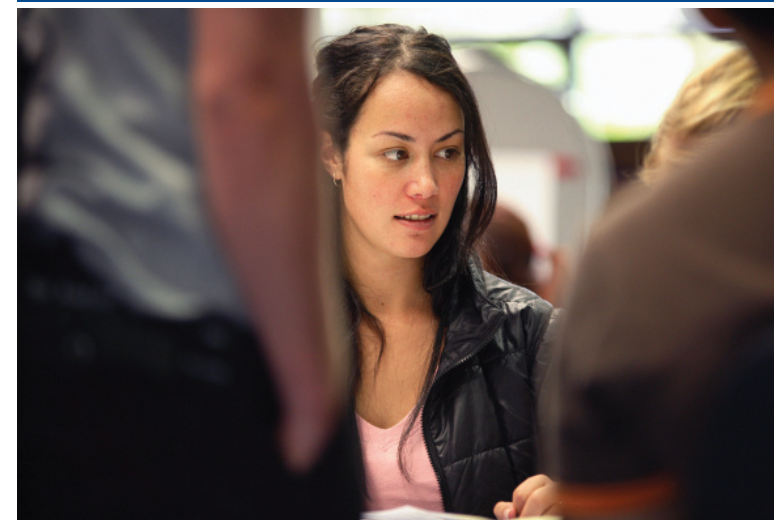
PAPER	TITLE	CREDIT	AUCK	PN	WGTN	EXTM
Undergraduate papers						
114180	Applied HRM	15				SS
114240	Org Behaviour	15	S1	S1	S1	S1
114241	Managing HR	15	S1	S1	S1	S1, SS
114242	HR Development	15	S1	S2		S2
114254	Employ Relations	15	S2	S1	S1	S1
114271	OSH I	15				DS
114272	OSH II	15				DS
114326	HR Practices	15	S2	S2	S2	S2
114327	Iss in Employ Rel	15				S2
114330	Equity & Diversity	15	S2			S1
114350	Current Iss in HRM	15	S1			S1
114355	Mgmt Development	15		S2	S2	S2
114370	ST(H&S Auditing)	15	BS1		BS2	
114372	Occupational Hygiene	15				DS
114374	Project in OSH	15				DS
114375	Special Topic in OSH	15				DS
114390	Researching Work	15		S1		S1
114394	Project in HRM	15				S2
114396	Strategic HRM	15	S2		S2	S2, SS
155301	Employment Law	15		S1		S1
155306	Health Care Law	15				DS
128300	Ergonomics	15		S1		DS
Postgraduate Papers						
114700	Principles of HRM	15	S1	S1		S1
114701	Principles OB	15	S1	S1		S1
114704	Principles of ER	15				S2
114705	Principles of HRD	15		S2		S2
114710	Org Learning	30				DS
114711	Adv HRD	15				S1
114717	Assessment & Selection	30	S2			
114722	Adv OB	30				S2
114723	Performance Mgmt	30	S2	S1		S1
114725	Comp Adv & HRM	15		S2		S2
114727	Int & Comp ER	15				S2
114728	Added Value in HR	30		S1		S1
114731	Adv OSH	30				DS
114761	International HRM	30	S1			
114762	Career Mgmt Int Context	30	S2			
114770	ST(H&S Audit)	30	BS1		BS2	
114772	Adv Occupational Hygiene	30				DS
114773	Hazard Management	30				DS
114775	Special Topic in OSH	30	S2			DS
114790	Adv Res Methods	30			DS	DS
			S1 S2			
114792	Research Report	60	DS	DS	DS	
114799	Research Report	30	S1 S2	DS	DS	DS
114899	Thesis	120		DS	DS	DS
114900	PhD	120	DS	DS	DS	DS
128702	Work Capacity & Perf	15				DS
128706	Micro/Macro Ergonomics	30				DS
155706	Adv Healthcare Law	30				DS
155751	Adv Employment Law	15				S1

DS = Double semester (Feb – Nov)
 S1 = Semester One (Feb – June)
 S2 = Semester Two (July – Nov)
 SS = Summer Semester (Nov – Feb)



Massey University
 COLLEGE OF BUSINESS
 Kaupapa Whai Pakihi

Programmes in Human Resource Management and Occupational Safety and Health



For further information please contact

0800 MASSEY
www.massey.ac.nz
hrm@massey.ac.nz



Te Kunenga
 Ki Pūrehuroa

INTRODUCTION

Managing people effectively, so they contribute to the organisation while being able to satisfy their own needs, is vital for any organisation that wants to retain its competitive edge. Massey University's offers the country's most comprehensive teaching programme in HRM. By way of illustration, there are papers in human resource development, human resource management, employment relations, employment law, equal employment opportunity, management development, occupational safety and health, current issues in HRM and organisational behaviour. Students can also undertake their own projects in HRM.

Credits / Workload

The credit value gives an indication of the total amount of time that a student might reasonably expect to have to spend on each paper in order to satisfactorily complete the assessment requirements e.g. 15 credits = 12.5 hours per week for a single semester paper or 6.25 hours per week for a double semester paper. A 30 credit paper requires 25 hours per week for a single semester paper or 12.5 hours for a double semester paper.

Graduate Diploma in Occupational Safety & Health (GDipOSH)

The GDipOSH at Massey University has been devised to provide people holding a first degree or other qualifications, including relevant work experience, with advanced knowledge and skills in the multidisciplinary area of occupational safety and health.

The GDipOSH for 2008 consists of 120 credits (8 papers) including the following:

All of 114.271, 114.272, 114.374, 128.300; and

One or both of 114.372, 114.375; and additional elective papers selected from an approved list.

Graduate Diploma in Business Studies (HRM)

The GradDipBusStuds is designed for people who wish to keep up with new developments in their professional fields and for people who wish to develop new professional skills to open up vocational possibilities.

The GradDipBusStuds (HRM) consists of:

114.240, 114.241, 114.242, 114.254, 114.326 and 114.396. Plus a further 2 papers from - 114.327, 114.330, 114.350, 114.355, 114.390, 114.394, 114.395 or 155.301.

Bachelor of Business Studies (BBS)

The BBS degree is made up of papers totalling at least 360 Credits (24 papers). Graduates from the BBS have a broad-based knowledge of business combined, if they choose, with specialist knowledge of a particular area of business.

The BBS core consists of nine foundation papers in business consisting of, Accounting, Finance, Management, Business Law, Marketing, Info Systems, Statistics, Economics and Communication.

The BBS also consists of 6 specialist papers (major) and 9 elective papers.

The BBS with a Human Resource Management major consists of

114.240, 114.241, 114.254, 114.326 and 114.396 and one of 114.305, 114.327, 114.330, 114.350, 114.355, 114.396, 114.390, 114.399, 155.301.

Bachelor of Business Studies (Hons)

The BBS (Hons) is a higher degree for students with a BBS or an equivalent Commerce degree from a New Zealand tertiary institution, who wish to acquire specialist advanced training in the same major. The Honours degree is a separate degree consisting of taught papers and a piece of supervised research which students gain in addition to the underlying bachelor degree.

The prescribed course of study is:

114.790, 114.799 plus 60 credits of approved 114.7xx papers.

Postgraduate Diploma in Business Administration (PGDipBusAdmin)

The PGDipBusAdmin provides advanced education in specialist business areas and consists of taught papers, although a project in an area of interest may be included. Non-business graduates can enhance their first degree by adding a postgraduate qualification in business.

Endorsed in Human Resource Management

120 credits at postgraduate level, including 90 credits in HRM papers. Students with no background in HRM are advised to take 114.700, 14.701, 114.704, and 114.705 which are prerequisites for some advanced HRM papers.

Endorsed in Occupational Safety & Health

114.731, 114.773, and 114.770 or 114.772 or 114.775, and 30 credits of elective at postgraduate level.

Master of Management (MMgt)

Many non-business graduates who want a higher degree in Business enrol in the MMgt after completing a PGDipBusAdmin in a specialist area.

Endorsed in Human Resource Management

90 credits of approved 114.7xx papers, including 114.790 and not less than 30 credits of reported research, plus electives to make a total of 120 credits.

Endorsed in Occupational Safety and Health

114.790 plus one of 114.770, 114.772 or 114.775, and not less than 30 credits of reported research plus electives to make a total of 120 credits.