

Wireless Network Configuration Guide iPad and iPhone

Network Access

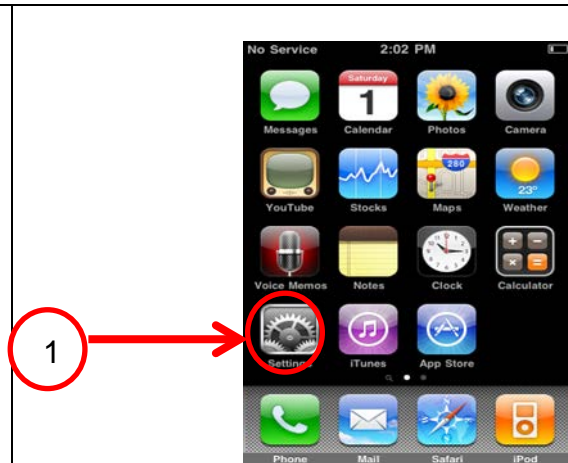
All users connecting to the network require Massey credentials.

- **Students:** Student ID + Password
- **Staff:** Usercode + Password

While most of the campus has wireless coverage, refer to the coverage map to identify the strongest connection points: <http://wireless.massey.ac.nz> - Select Wireless coverage.

In this guide, images on the left hand side are for iPad configuration while images displayed on the right hand side are for iPhone configuration.

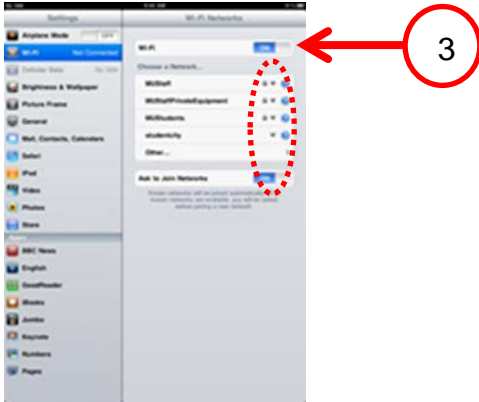
1. Drag across the screen until you see the settings button, click on the settings icon.



2. Click on Wi-Fi and you should see a list of networks appear on the right.



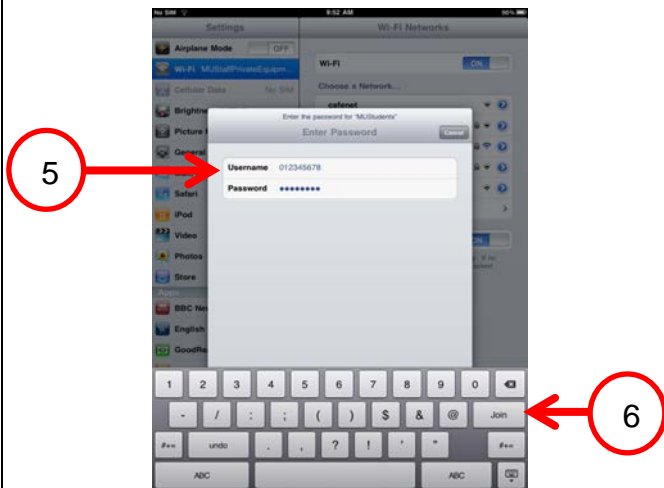
3. Check that Wi-Fi is turned ON
If the numbers of bars are low this indicates poor signal strength and you may have trouble connecting



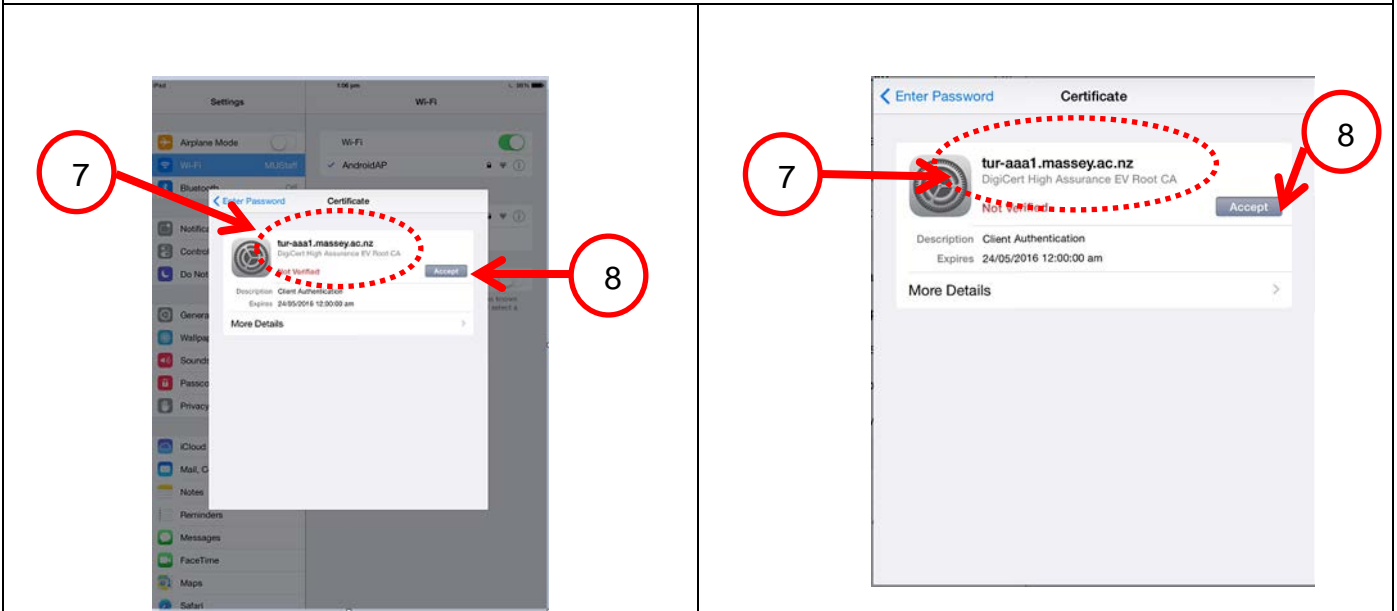
4. From the list of available wireless networks, tab on one of the following wireless networks:



- **MUStaff:** Staff using Massey-managed equipment (those with an ITXXXXXX number).
- **MUStaffPrivateEquipment:** Staff using private or non-Massey equipment.
- **MUStudents:** Student users on any wireless equipment.


5. Enter your login credentials, for Staff this is using your Massey username and password; for Students your student ID number and password.
6. Click Join

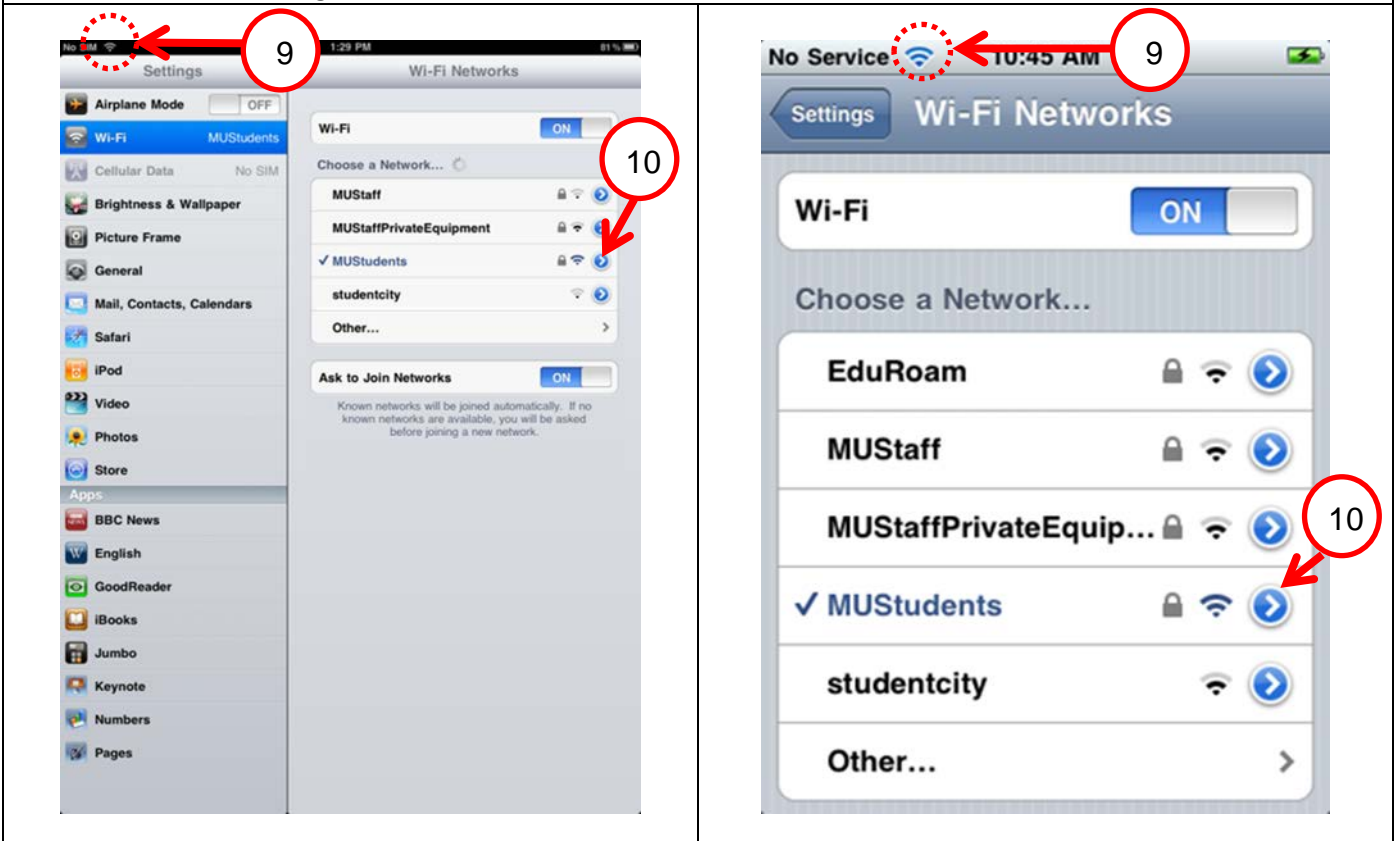


7. Validate server certificate –Check that the certificate is from **tur-aaa1.massey.ac.nz**
8. Click on **Accept**.



9. You should now be connected to the wireless network, you should see a wireless symbol   on the top of the screen.

10. Click on the Blue arrow  of the network you are connected, where you can configure settings for Internet Browsing.



11. To configure the Proxy so you can browse internet pages via the wireless, you need to setup your proxy settings.
12. For **Auto Proxy setup**, Tap **Auto**.

IP ADDRESS

DHCP BootP Static

IP Address 10.2.194.245

Subnet Mask 255.255.252.0

Router 10.2.192.1

DNS 130.123.128.16, 130.123.128.181, 130.123.192.37

Search Domains massey.ac.nz

Client ID

Renew Lease

HTTP PROXY

Off Manual **Auto**

URL

You should now be connected to a Massey network.