

# CAMPUS REVITALISATION

## Reimagining our Spaces

So bright minds can  
collide

Report on the Ōteihā session  
held 2 October 2024

Final report  
20 November 2024

# Executive summary

## Reimagining our Spaces

### Campus Revitalisation




**HAVE YOUR SAY  
MASSEY UNIVERSITY  
CAMPUS REVITALISATION**




**HAVE YOUR SAY  
MASSEY UNIVERSITY  
CAMPUS REVITALISATION**

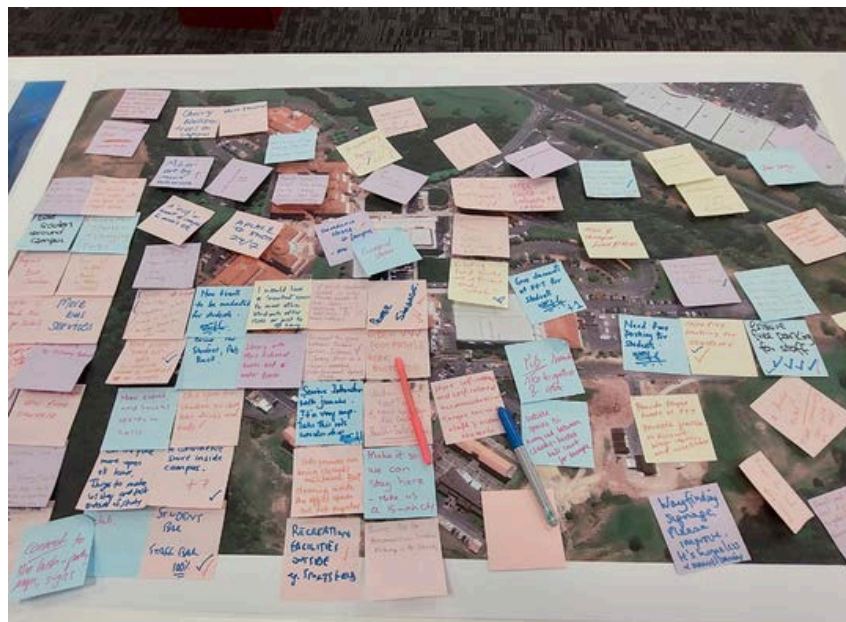
This report provides an overview of the key themes from feedback gathered during the Reimagining the Future for our Campus drop-in session that was held on the Ōteihā | Auckland campus on 2 October 2024.


The workshop focused on reimagining the Ōteihā campus and attendees were encouraged to share their thoughts and ideas.

#### Report contents:

- 3 Key themes from the four main stations
- 4 How we're feeling about Ōteihā campus
- 5 Papaako Whakahoahoa | Atmosphere and Vibes
- 6 Papaako Haumarū | Places and Spaces
- 7 Papaako Tūhono | Connected Campuses
- 8 Papaako Manaaki | Somewhere to Belong
- 9 Campus Heart and Innovation Complex
- 10 Lucas Creek and Chicken Wing
- 11 Next steps

This report was prepared by the Sustainability, Policy and Comms team, within Estates Management, University Services.




**HAVE YOUR SAY  
MASSEY UNIVERSITY  
CAMPUS REVITALISATION**




**HAVE YOUR SAY  
MASSEY UNIVERSITY  
CAMPUS REVITALISATION**

# Key themes from the four main workshop stations

## Reimagining our Spaces

### Campus Revitalisation

122

session attendees\*  
67 students  
55 staff

### Papaako Whakahoahoa Atmosphere and Vibes

- Hold more events and activities - music, games, cultural events, celebrations, etc.
- Display more art, especially by students
- Open a bar or reopen The Ferguson
- Bring more people back onto the campus
- Increase course offerings

### Papaako Haumaru Places and Spaces

- More green spaces and sustainability-related requests
- Improve existing and create new spaces for connection and collaboration
- Clean and maintain the campus, particularly indoors
- Improve signage and wayfinding

### Papaako Tūhono Connected Campuses

- Open retail outlets, e.g., a convenience store, Massey merch store, pharmacy, etc.
- Offer more sports and recreation facilities and activities
- Have more food options - cheaper and catering to more dietary needs
- Increase opportunities for connection with communities
- Improve commuting/transport
- Open campus for longer

### Papaako Manaaki Somewhere to belong

- Build a marae
- Enable a sense of belonging and value for staff and students
- Hold more Māori events and activities and display more Māori art
- Improve accessibility around campus
- Have more visible leadership on campus
- Increase wellbeing and pastoral care

1,000+ pieces of feedback  
from session attendees\*\*

\*122 attendees signed in, there will have been others who did not sign in.

\*\*Feedback included A3 templates that contained various prompts for workshop attendees; Post-it notes gathered from the stations and campus maps; drawings; and sentiments from emotion cards.

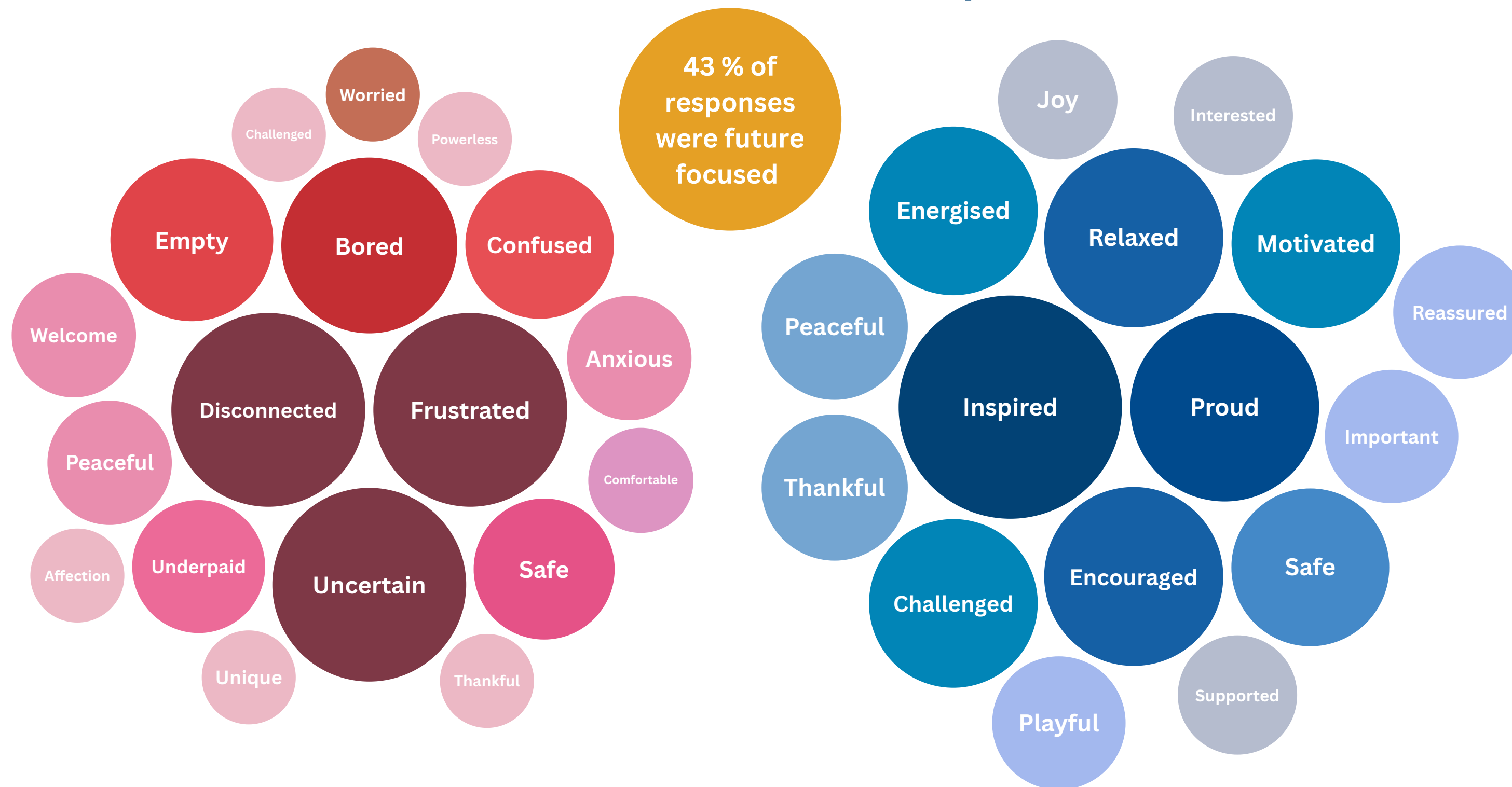
# How we're feeling about Ōteihā campus

## Reimagining our Spaces

### Campus Revitalisation

#### How staff and students are feeling **now**

#### How they would like to feel in the **future**

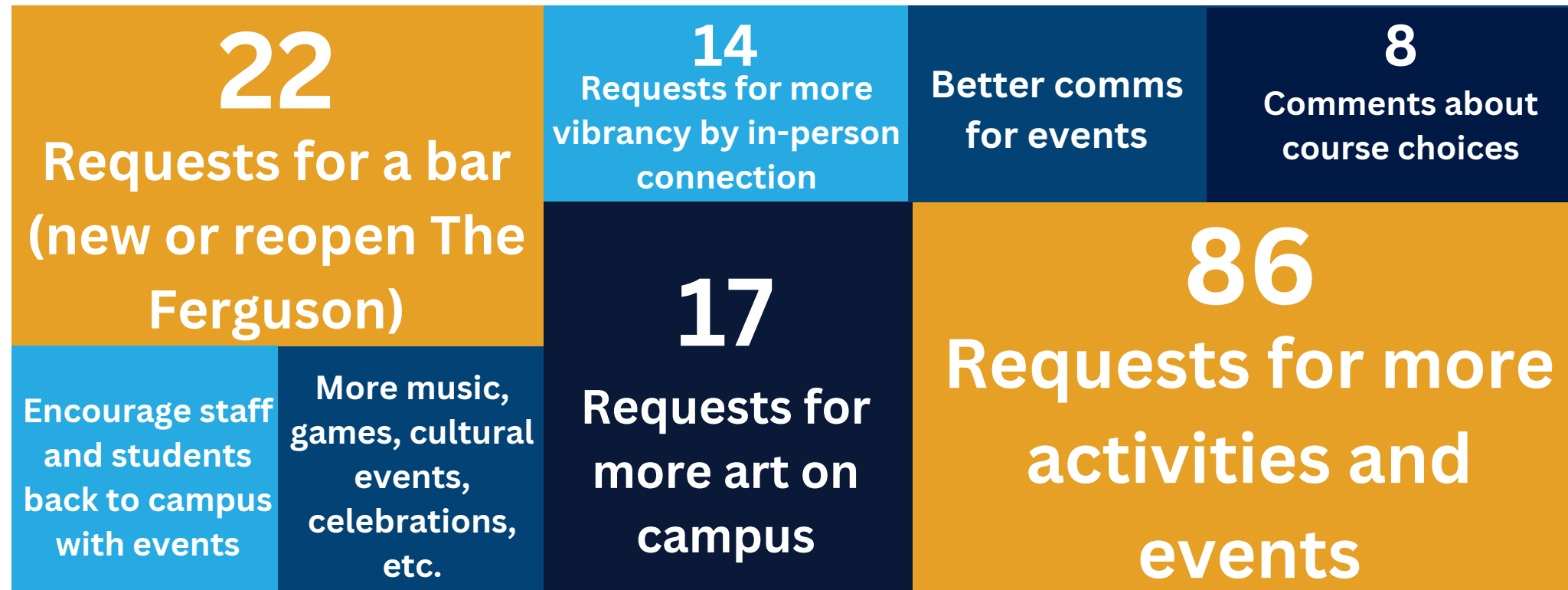



# Papaako Whakahoahoa

## Atmosphere and Vibes

## Reimagining our Spaces

### Campus Revitalisation



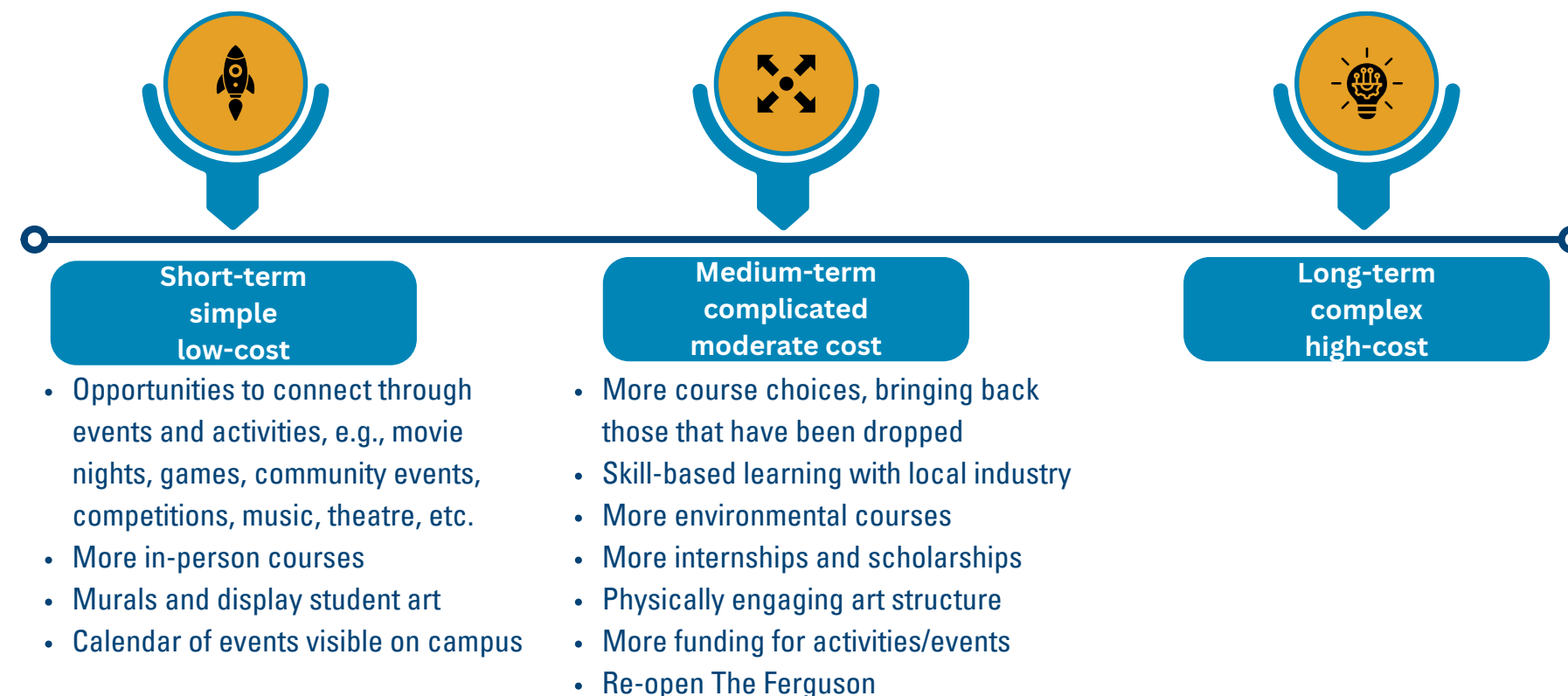

 Making the campus a place you  
 want to be

"Hold competitions for staff and students during the  
 year. E.g., games on grass with prizes that can bring  
 a crowd."

"Value connection by creating more informal  
 opportunities for bonding- professional and  
 academic. Work improves if you know each other  
 personally."

### Session participants suggested various opportunities to revitalise the campus

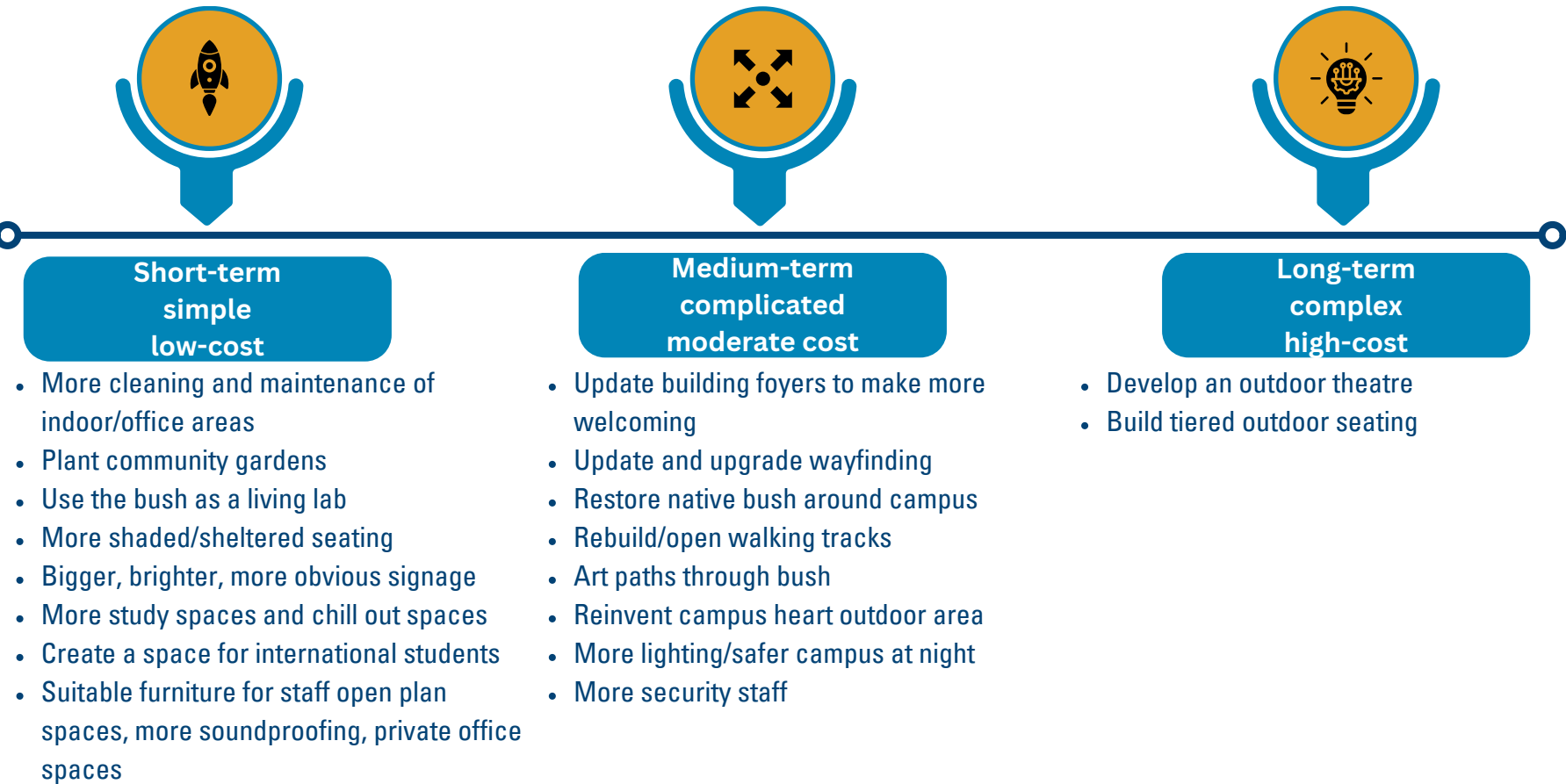
Below is a selection of these opportunities categorised by how long they might take to achieve, their complexity, and how costly they might be. The university will consider what to progress and when. Decisions will be communicated to students, staff, and stakeholders in due course.





Session participants suggested various opportunities to revitalise the campus

Below is a selection of these opportunities categorised by how long they might take to achieve, their complexity, and how costly they might be. The university will consider what to progress and when. Decisions will be communicated to students, staff, and stakeholders in due course.



Papaako Haumaru  
Places and Spaces

“

Designing a campus that protects Te Taiao and helps you thrive

”

"Clean the campus! Give cleaners more hours so they can clean more frequently. It's embarrassing on open days. It's degrading for staff and students."

"Plant and teach to recognise Māori herbs and medicinal plants in the bush areas for knowledge, mindful time, good wellbeing, and connection to the land."

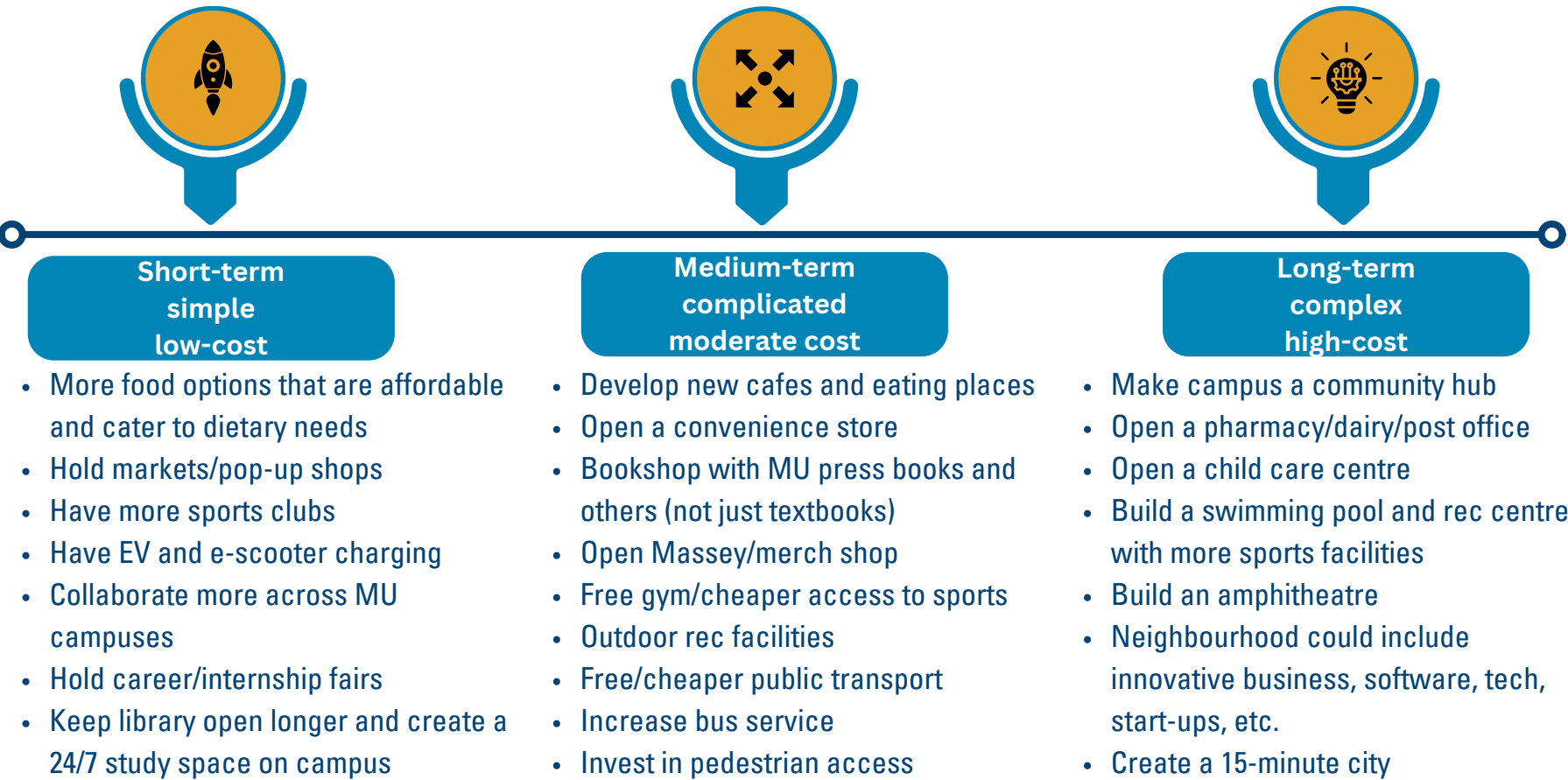
Reimagining  
our Spaces

Campus Revitalisation



Session participants suggested various opportunities to revitalise the campus

Below is a selection of these opportunities categorised by how long they might take to achieve, their complexity, and how costly they might be. The university will consider what to progress and when. Decisions will be communicated to students, staff, and stakeholders in due course.



Papaako Tūhono  
Connected Campuses

Growing into a liveable precinct and diverse neighbourhood

“Have a scientific research centre where we could research and develop new technologies.”

“Work with the business school or students for ideas of ways to bring in \$\$.”

Regarding the bookshop, “[Sell] real books, not just text books. It could be the one decent bookshop on the Shore.”

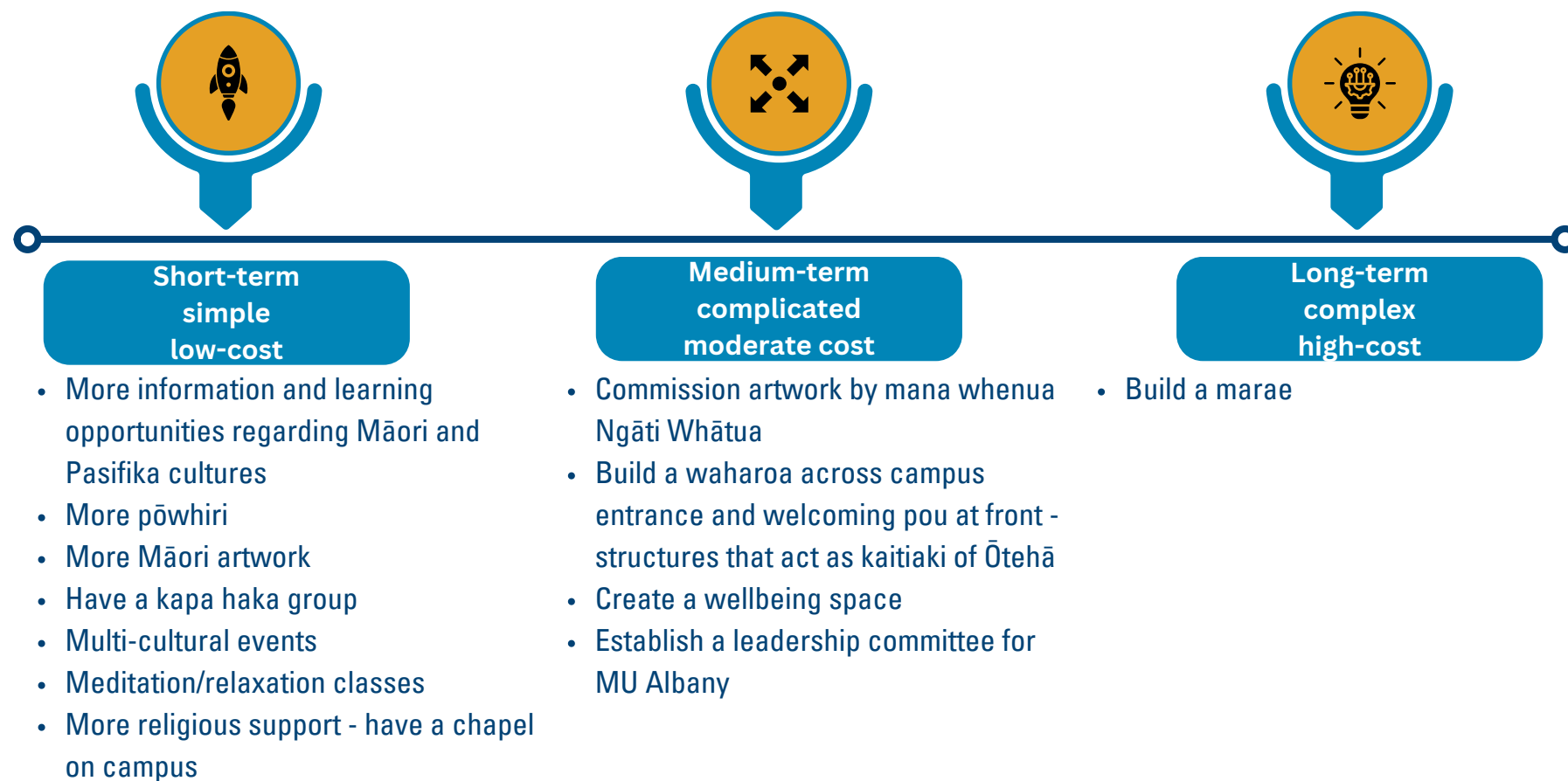
Reimagining  
our Spaces

Campus Revitalisation



## Session participants suggested various opportunities to revitalise the campus

Below is a selection of these opportunities categorised by how long they might take to achieve, their complexity, and how costly they might be. The university will consider what to progress and when. Decisions will be communicated to students, staff, and stakeholders in due course.



## Papaako Manaaki Somewhere to Belong



Contributing to a campus where you see yourself and are nurtured

"We are the only campus without a marae (although the Manawatū Māori studies building is not really a marae)- Tāmaki Makarau has the largest tangata whenua population.

Toitū te Tiriti"

"Massey Ōteihā identity can be better - not sure what the 'DNA' is"

"Value staff - we are Massey - without us there will be no-one to teach students."



## Reimagining our Spaces

### Campus Revitalisation

# Campus Heart



Short-term  
simple  
low-cost

- Host more events, especially markets, pop-up shops and other community events
- Play music and host concerts and festivals
- Add games to play
- Add tables for study
- Add more colour (including flags- Māori, rainbow, different nationalities)
- Create different 'zones' for socialising
- Add more plants
- Add beanbags

Medium-term  
complicated  
moderate cost

- Move all current food outlets to the campus heart
- Add grip to concrete for when wet
- Add more food outlets (e.g. Asian and Italian, fine dining options)
- More shaded areas to sit
- Upgrade Te Rau Tauawhi with colour and signage
- More shade, including sheltered areas to study outside
- More trees

Long-term  
complex  
high-cost

- Add basketball and volleyball courts
- Open a new café

“Liven up the campus during the day.”

“Redevelop the space in front of SNW, Student Central, Sciences, Library as a vibrant meeting, eating, entertainment space with outdoor covered seating, games, concerts, events.”

# Innovation Complex



Short-term  
simple  
low-cost

- Host poetry readings and book readings
- Host lectures
- Hold lunchtime events
- Host community events on the front lawn
- Base more student activities and work here
- Play music and host concerts
- Improved storytelling
- Student performances
- Add microwaves

Medium-term  
complicated  
moderate cost

- Install an exhibition/ art space (and showcase art from our CoCA students to connect our campuses)
- Install a big sign that can be used for graduation events and photos
- Add a working café

Long-term  
complex  
high-cost

“Best building on campus, utilise it to welcome visitors.”

“This should be the showcase building... where everyone comes first.”

## Reimagining our Spaces

### Campus Revitalisation

## Lucas Creek



Short-term  
simple  
low-cost

- Add more tables in shade
- Maintain paths
- Upgrade existing tables
- Add more seating
- Add gym equipment

Medium-term  
complicated  
moderate cost

- Build a shelter
- Improve existing paths
- Add more running and walking routes
- Connect to the campus with paths, signs and maps

Long-term  
complex  
high-cost

"I love this space but it needs to have more going on with it as it is quite isolated."

"I love the green space around Massey."

## Chicken Wing



Short-term  
simple  
low-cost

- Decorate the Chicken Wing by season/holiday, e.g., Santa hat, flower crown in Spring
- Add info about the Chicken Wing

Medium-term  
complicated  
moderate cost

Long-term  
complex  
high-cost

Note: Further feedback was provided about the Quad area - including having more food options and more Māori murals.

"Let's open a KFC to make the sculpture more meaningful."

"To make the most of this space, we need to figure out what we are using the surrounding buildings for. At the moment, they are half empty."

## Reimagining our Spaces

### Campus Revitalisation

The Ōteihā drop-in session yielded a vast array of ideas about how to revitalise the campus to create a vibrant, diverse, and inspiring environment.

Recent times have been challenging and yet the feedback gathered from the session was largely positive, future-focused and constructive. It's clear that our people want to see Te Kunenga ki Pūrehuroa Massey University flourish.

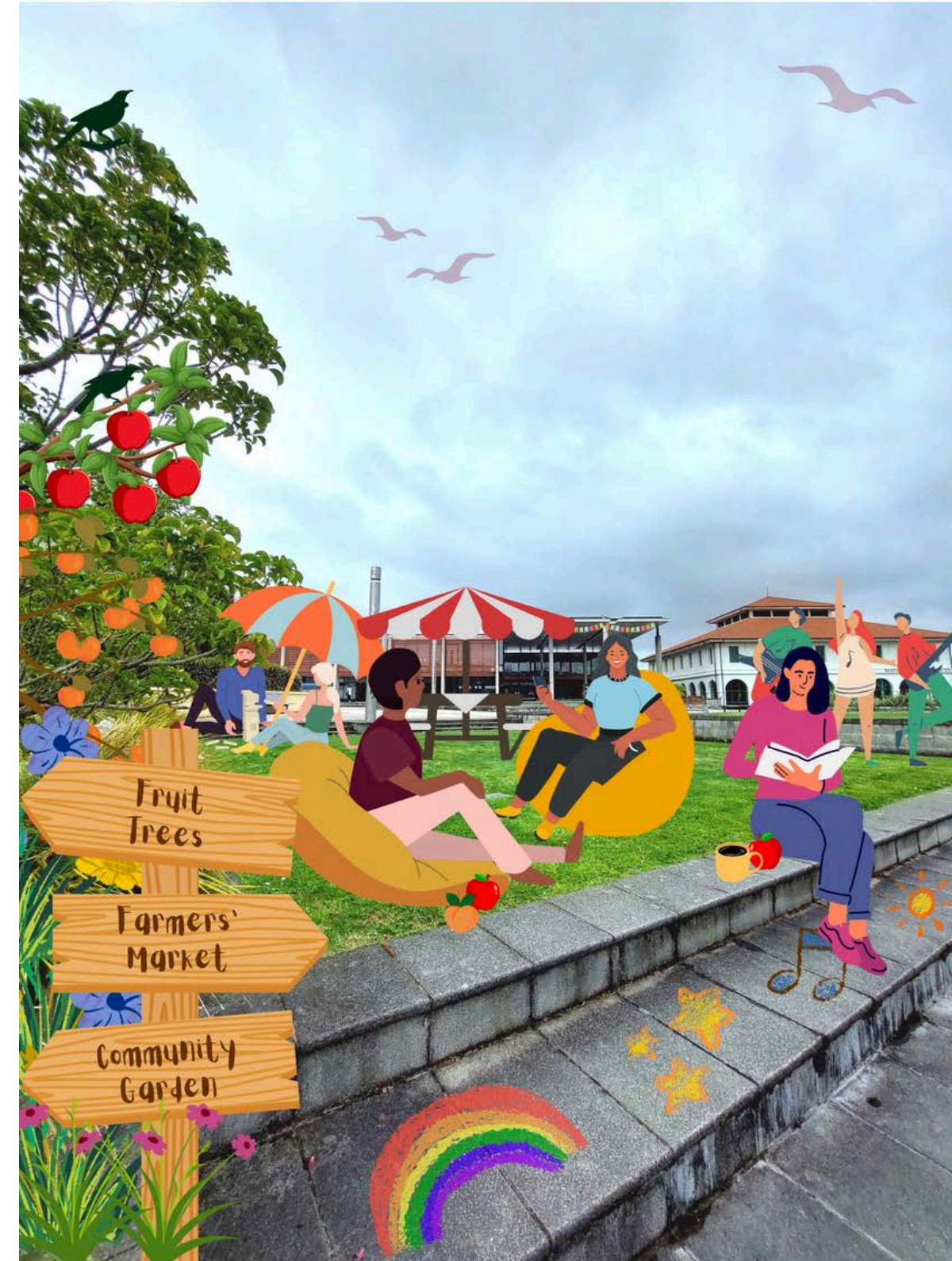
Work is now underway to consider which ideas to progress and when. While this work is being developed, more consideration can be given to longer-term campus planning.

Ngā mihi nui to all of you who shared your thoughts and feelings.

You have been heard.

**NĀU TE ROUROU,  
NĀKU TE ROUROU, KA  
ORA AI TE IRI**

With your food basket and my food basket the people will thrive



## Next steps

## Reimagining our Spaces

### Campus Revitalisation