

Benchmarking

Rotorua Lakes



A joint **Bay of Plenty Regional Council**, **Rotorua District Council** and **Te Arawa Lakes Trust** project

Rule 11

- Diffuse discharge of N and P is permitted provided:
 1. Farmers supply benchmarking information
 2. Discharges remain below benchmarked level
- Caps discharges to 2001-2004 levels, but does not achieve water quality target
- Applies to five lakes

Benchmarking Objectives

1. Prevent further intensification
2. Give the best estimates of agricultural discharges to the lakes
3. Educate and raise awareness
4. Provide a baseline for compliance at the property level

Benchmarking Method

- Benchmarked area defined by surface water catchment
- Physical parameters provided by GIS and LiDAR analysis
- Combination of data and user discretion
- Protocols developed as required
- Utilised Council staff and local farm consultants

How is the benchmark used?

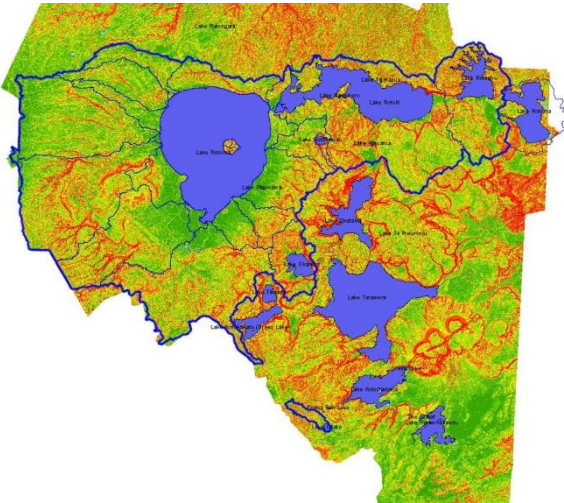
- Banks
- Valuers
- Purchasers



- Rotorua District Council
(subdivisions, tradeable development rights?)
- Bay of Plenty Regional Council
(land use change agreements)

Issues

OVERSEER[®]
For on-farm management and decision support



The Future...

- Pro
- Rot
- abo
- loss
- Nev
- stal
- Me
- unc
- Ince



with
all
ce

<http://www.sonowwhat.net>



GOVERNMENT

Dont worry, they're just as confused as you are.



GOVERNMENT

An organization within a given geographical area holding a monopoly on legal coercion and brutality while claiming legitimacy via election.

Issues

- Determination of catchment boundaries - LiDAR
- Method of defining block slopes – LiDAR
- Historical aerial photography invaluable
- Soil information/soil testing (do we pursue accuracy or find alternative approach)
- Co-ordination with Waikato Regional Council required to control all discharges into Lake Rotorua
- Knowledge and capacity of rural professionals
- GIS linkages to Overseer
- Quantifying unmeasured losses (CSA's)